



Price
£400,000

3x  1x  2x 

**Court Road, Walmer,
Deal, Kent, CT14**

OVER 60?

Secure this property
for up to **59% less!**

Wards
Helping you move forwards



Main features

- Large spacious entrance hall
- All bedrooms can accommodate double beds
- Period home with spacious rooms and high ceilings
- Minutes from train station
- Garden with separate court yard and astroturf garden

Accommodation

GROUND FLOOR

ENTRANCE HALL

Lounge : 11'10 x 10'2 (3.61m x 3.10m)
 Dining room : 13'5 x 12'4 (4.09m x 3.76m)
 Kitchen : 14'8 x 8'3 (4.47m x 2.52m)
 Downstairs Toilet

FIRST FLOOR

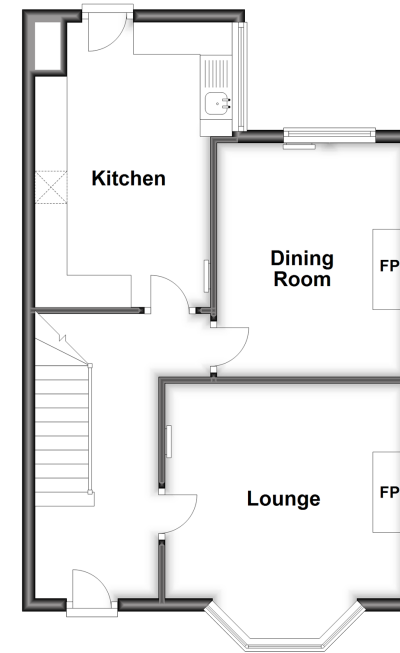
Bedroom 1: 13'5 x 12'3 (4.09m x 3.74m)
 Bedroom 2 : 12'1 x 10'3 (3.69m x 3.13m)
 Bedroom 3: 11'5 x 8'4 (3.48m x 2.54m)
 Bathroom
 Separate Toilet

OUTSIDE

front and rear garden

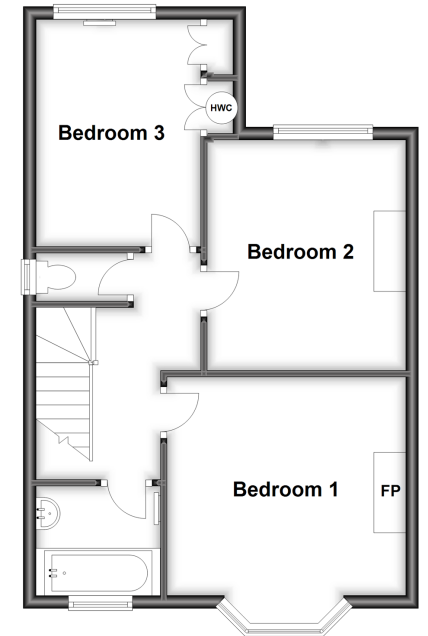
Ground Floor

Approx. 47.1 sq. metres (506.6 sq. feet)



First Floor

Approx. 47.0 sq. metres (505.4 sq. feet)



Call Deal - 01304 361420 ■ wardsforkent.co.uk

- Legal advice should be taken to verify fixtures/fittings, planning, alterations and/or lease details
- Appliances & services are untested, dimensions are approximate and floor plans are not to scale
- Through a Homewise Home For Life Plan people aged 60+ can secure this property for up to 59% less, by purchasing a Lifetime Lease.



10634558/20230417/LB1/LB1