



Price
£450,000

Freehold

3x  2x  2x 

**Oast Cottages, The
Street,
Woodnesborough, Kent,
CT13**

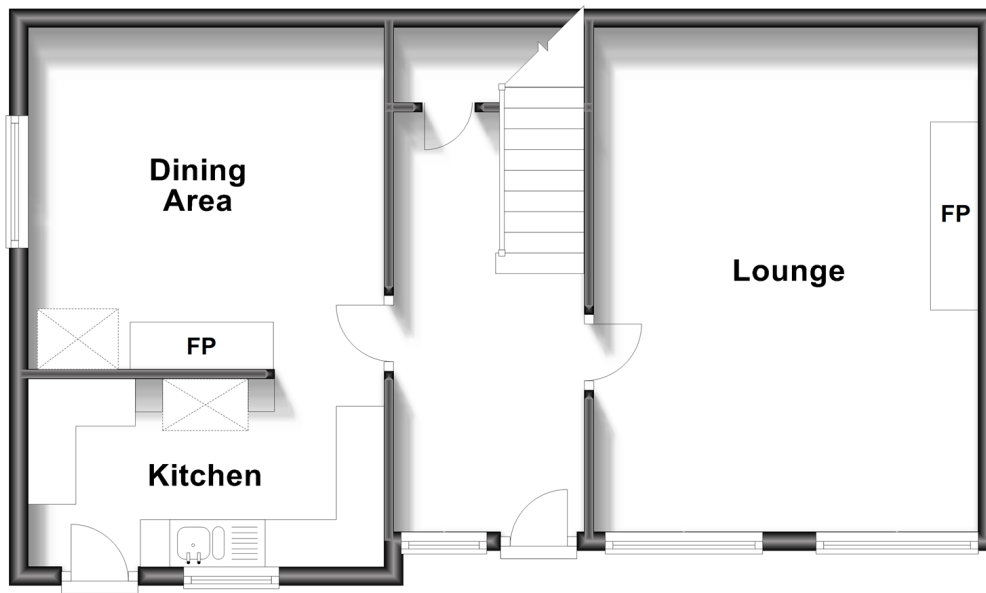
OVER 60?

Secure this property
for up to **59% less!**

Wards
Helping you move forwards

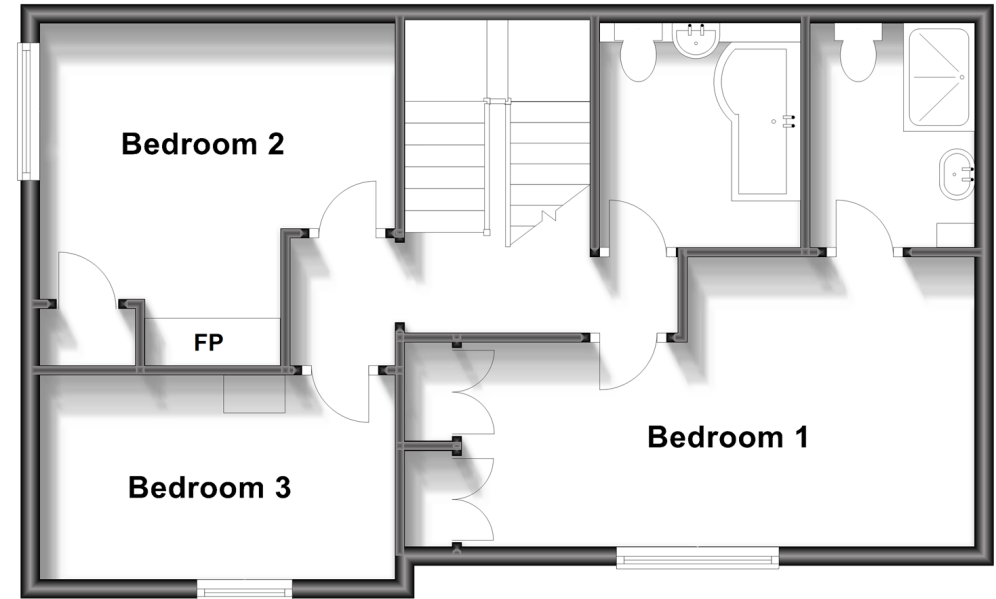
Ground Floor

Approx. 54.6 sq. metres (587.3 sq. feet)



First Floor

Approx. 55.6 sq. metres (598.5 sq. feet)



Accommodation

GROUND FLOOR

Entrance Hall

Lounge : 17'4 x 13'6 (5.29m x 4.12m)

Kitchen : 12'3 x 5'11 (3.74m x 1.80m)

Dining Area : 12'6 x 10'8 (3.81m x 3.25m)

FIRST FLOOR

Bedroom 1: 17'8 x 10'1 (5.39m x 3.08m)

En-suite

Bathroom

Bedroom 2 : 12'5 x 10'10 (3.79m x 3.30m)

Bedroom 3: 12'2 x 6'10 (3.71m x 2.08m)

OUTSIDE

Front and Rear Garden

Garage

Home Office : 15'1 x 11'5 (4.60m x 3.48m)



Main features

- Grade II listed converted Oast house
- Exclusive location situated on a private road
- Surrounded by stunning countryside
- Garage and allocated parking space
- Beautiful large garden complete with home office and overlooking a medieval moat



Nearest Schools

Primary Schools: Sandwich Junior School 1.0 miles, Eastry C of E Primary 1.1 miles, Worth Primary 1.5 miles

Secondary Schools: Sandwich Technology School 0.9 miles, Sir Roger Manwood's School 1.4 miles, Great Oaks

Transport Information

Train Stations: Sandwich 1.3 miles, Deal 4.6 miles, Walmer 5.0 miles

Address

Oast Cottages, The Street, Woodnesborough, Kent, CT13

Directions

For directions to this property please contact us.





Call Deal Branch 01304 361420 ■ wardsofkent.co.uk



■ If buying to let, the energy rating will need to be improved to at least 'E' rating before you can let the property
■ Appliances & services are untested, dimensions are approximate and floor plans are not to scale

■ Legal advice should be taken to verify fixtures/fittings, planning, alterations and/or lease details
■ Through a Homewise Home For Life Plan people aged 60+ can secure this property for up to 59% less, by purchasing a Lifetime Lease.

10634573/20240226/LB1/LB1