



**Price**

**£150,000**

**Leasehold**

3x  1x  1x 

**Kingsdown Park, Upper  
Street, Kingsdown, Deal,  
Kent, CT14**

*Wards*  
Helping you move forwards



## Main features

- Rarely available detached chalet
- Living room has been extended to the front
- Currently a successful holiday let
- Private decking to the rear with direct sea views
- Situated in a quiet area of Kingsdown holiday park

## Accommodation

### GROUND FLOOR

Lounge/Diner: 19'1 x 13'0 (5.82m x 3.97m)

Bathroom

Bedroom 3: 8'8 x 7'10 (2.64m x 2.39m)

Kitchen : 9'2 x 7'7 (2.80m x 2.31m)

### FIRST FLOOR

Landing

Bedroom 1: 10'9 x 9'11 (3.28m x 3.02m)

Bedroom 2: 9'8 x 7'7 (2.95m x 2.31m)

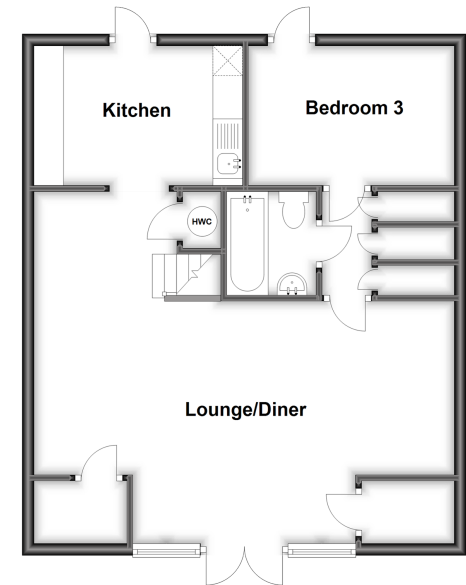
Cloakroom

### OUTSIDE

Private Decking Area

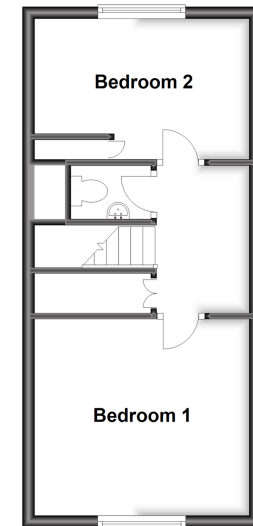
### Ground Floor

Approx. 59.2 sq. metres (637.3 sq. feet)



### First Floor

Approx. 30.2 sq. metres (325.5 sq. feet)



**Call Deal - 01304 361420 ■ [wardsofkent.co.uk](http://wardsofkent.co.uk)**

- If buying to let, the energy rating will need to be improved to at least 'E' rating before you can let the property
- Legal advice should be taken to verify fixtures/fittings, planning, alterations and/or lease details
- Appliances & services are untested, dimensions are approximate and floor plans are not to scale



10634575/20230819/BH/WSM