



Price

£800,000

Freehold

4x  2x  3x 

**Cherry Lane, Great
Mongeham, Deal, Kent,
CT14**

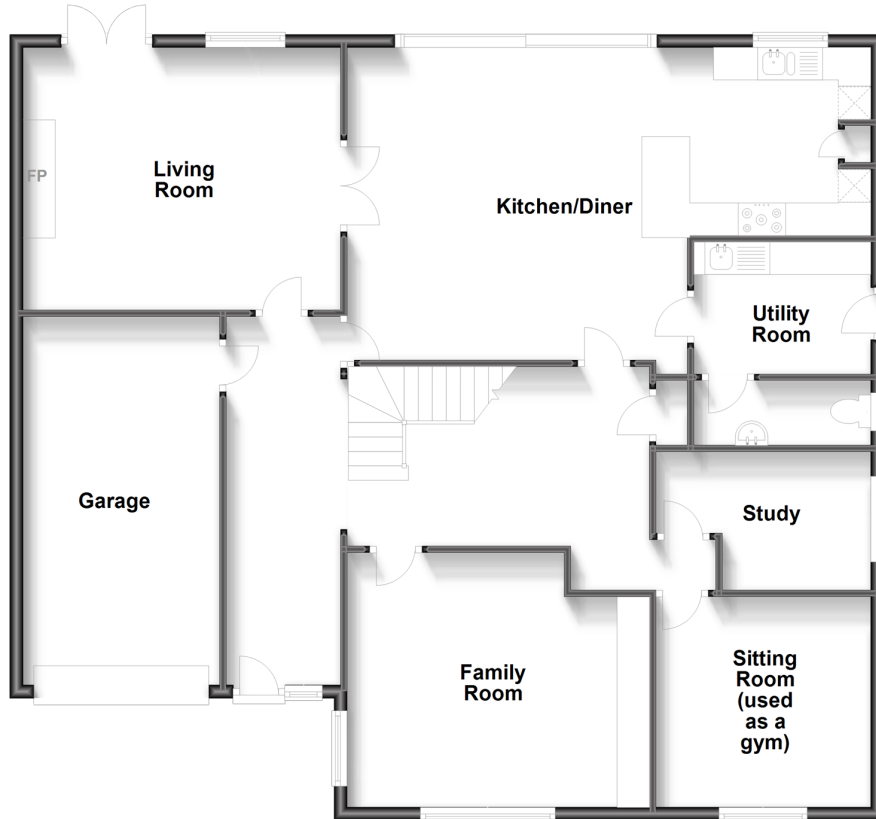
OVER 60?

Secure this property
for up to **59% less!**

Wards
Helping you move forwards

Ground Floor

Approx. 143.1 sq. metres (1540.5 sq. feet)



First Floor

Approx. 92.9 sq. metres (1000.2 sq. feet)



Accommodation

GROUND FLOOR

Entrance hallway

Living Room : 16'0 x 13'0 (4.88m x 3.97m)

Family Room: 14'3 x 12'0 (4.35m x 3.66m)

Sitting Room (used as a gym): 10'8 x 10'5
(3.25m x 3.18m)

Study : 10'8 x 7'2 (3.25m x 2.19m)

Kitchen/Diner: 26'5 x 17'3 (8.06m x 5.26m)

Utility Room: 8'6 x 6'1 (2.59m x 1.86m)

Cloakroom

FIRST FLOOR

Landing

Bedroom 1: 18'0 x 14'10 (5.49m x 4.52m)

En-Suite Shower Room

Bedroom 2: 15'0 x 11'0 (4.58m x 3.36m)

Bedroom 3: 12'10 x 12'4 (3.91m x 3.76m)

Bedroom 4: 12'10 x 12'4 (3.91m x 3.76m)

Bathroom

OUTSIDE

Garage and Driveway

Front and Rear Gardens

Games Room



Main features

- Beautifully presented large detached family home in a village location
- Stunning modern, sleek kitchen installed in 2021
- Flexible accommodation throughout to suit your family's needs
- Large garden with no overlooking properties complete with cabin and large games room with power, air conditioning and Wi-Fi
- Garage and multi car driveway



Nearest Schools

Primary Schools: St Mary's Catholic Primary 0.6 miles, Hornbeam Primary 0.7 miles, Sholden C of E Primary 0.8 miles. Secondary Schools: Ripplevale School 1.0 miles, Goodwin Academy 1.3 miles, Goodwin Academy 1.3 miles



Transport Information

Train Stations: Walmer 1.1 miles, Deal 1.8 miles, Martin Mill 2.9 miles



Address

Cherry Lane, Great Mongeham, Deal, Kent, CT14



Directions

For directions to this property please contact us.



Call Deal Branch 01304 361420 ■ wardsofkent.co.uk



- Legal advice should be taken to verify fixtures/fittings, planning, alterations and/or lease details
- Appliances & services are untested, dimensions are approximate and floor plans are not to scale
- Through a Homewise Home For Life Plan people aged 60+ can secure this property for up to 59% less, by purchasing a Lifetime Lease.



10634580/20231009/LB1/LB1