



OVER 60?

Secure this property
for up to **59% less!**

Price

£520,000

Freehold

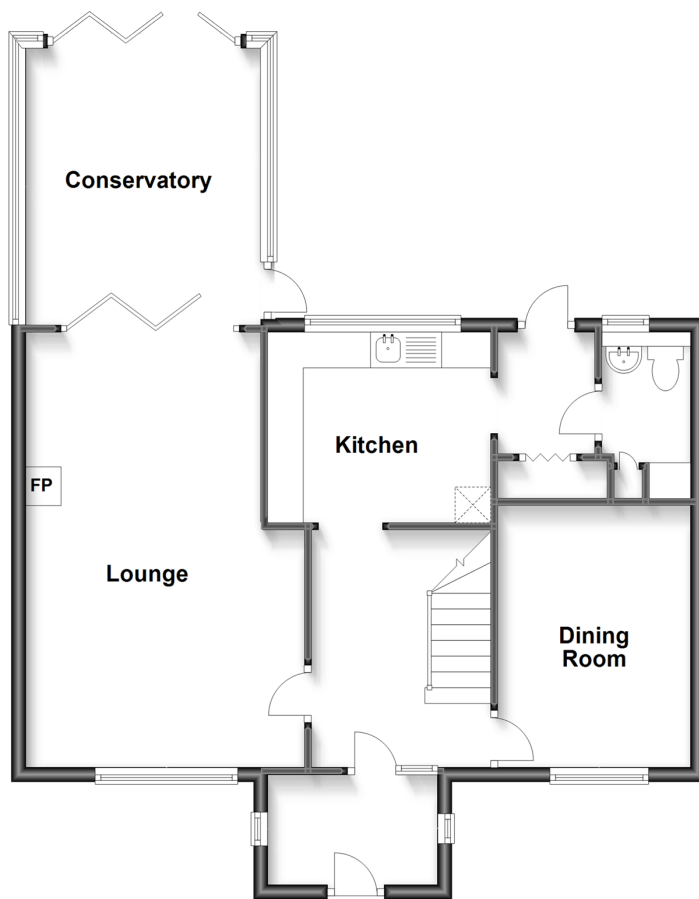
3x  1x  2x 

**Northbourne Road,
Great Mongeham, Deal,
Kent, CT14**

Wards
Helping you move forwards

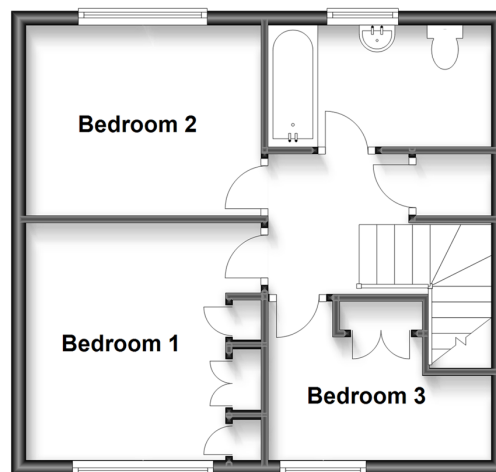
Ground Floor

Approx. 73.9 sq. metres (795.3 sq. feet)



First Floor

Approx. 39.8 sq. metres (428.2 sq. feet)



Accommodation

GROUND FLOOR

Porch

Entrance hall

Lounge : 20'2 x 12'9 (6.15m x 3.89m)

Conservatory

Dining room : 13'2 x 8'0 (4.02m x 2.44m)

Kitchen : 10'3 x 9'6 (3.13m x 2.90m)

Cloakroom

FIRST FLOOR

Landing

Bathroom

Bedroom 2 : 10'10 x 8'10 (3.30m x 2.69m)

Bedroom 1 : 11'1 x 11'0 (3.38m x 3.36m)

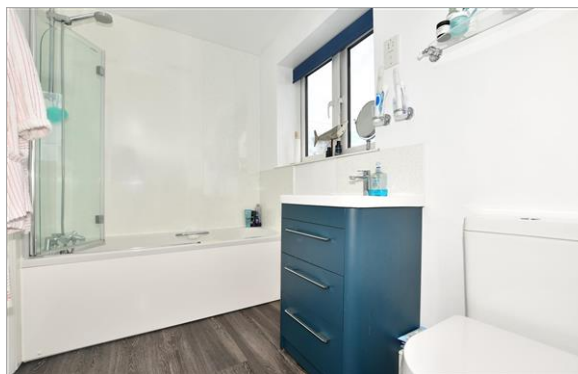
Bedroom 3: 10'3 x 6'4 (3.13m x 1.93m)

OUTSIDE

Driveway

Garage

Front and Rear Garden



Main features

- Stunning views to the rear stretching to Sholden and beyond
- Garage and block paving driveway parking for several cars
- Excellent condition throughout
- Semi rural location with stunning local scenery only a short drive to Deal or Sandwich
- Many updates done including conservatory and new bathroom suite



Nearest Schools

Primary Schools: Hornbeam Primary 0.8 miles, St Mary's Catholic Primary 0.9 miles, Sholden C of E Primary 0.9 miles

Secondary Schools: Ripplevale School 1.1 miles, Goodwin



Transport Information

Train Stations: Walmer 1.3 miles, Deal 1.9 miles, Martin Mill 3.0 miles



Address

Northbourne Road, Great Mongeham, Deal, Kent, CT14



Directions

For directions to this property please contact us.



Call Deal Branch 01304 361420 ■ wardsofkent.co.uk



■ Legal advice should be taken to verify fixtures/fittings, planning, alterations and/or lease details ■ Appliances & services are untested, dimensions are approximate and floor plans are not to scale
 ■ Through a Homewise Home For Life Plan people aged 60+ can secure this property for up to 59% less, by purchasing a Lifetime Lease.



10634582/20230511/LB1/LB1