



**OVER 60?**

Secure this property  
for up to **59% less!**

**Price**

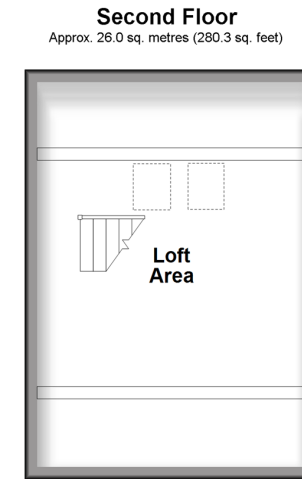
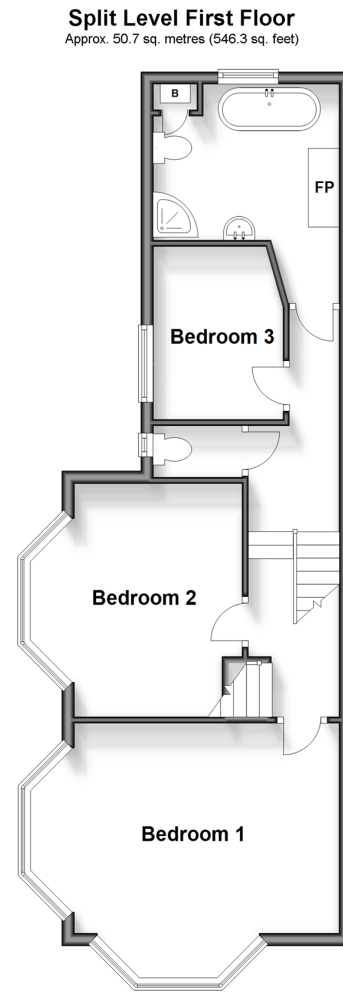
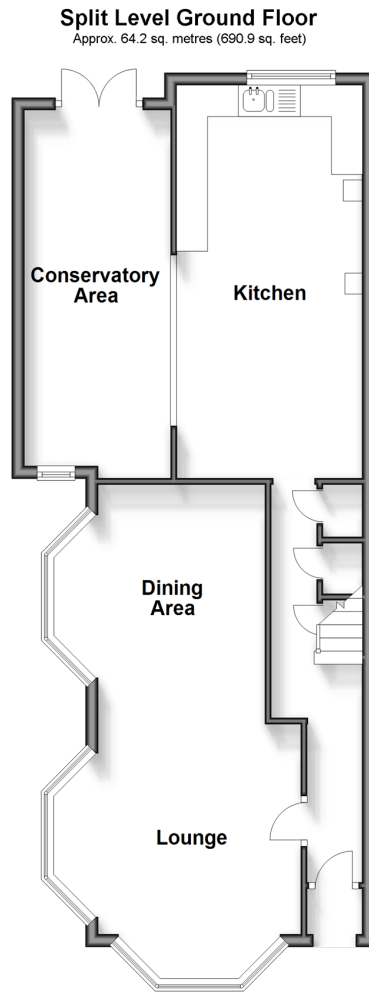
**£450,000**

**Freehold**

3x  1x  2x 

**Ravenscourt Road, Deal,  
Kent, CT14**

*Wards*  
Helping you move forwards



## Accommodation

### SPLIT LEVEL GROUND FLOOR

Entrance Hallway  
Lounge/ Dining Area : 23'9 x 10'10 (7.24m x 3.30m)  
Kitchen : 20'4 x 9'9 (6.20m x 2.97m)  
Conservatory Area : 19'9 x 7'8 (6.02m x 2.34m)

### SPLIT LEVEL FIRST FLOOR

Landing  
Bedroom 1: 8'11 x 6'11 (2.72m x 2.11m)  
Bedroom 2: 14'1 x 11'0 (4.30m x 3.36m)  
Seperate Toilet  
Bedroom 3: 12'2 x 8'11 (3.71m x 2.72m)  
Bathroom

### SECOND FLOOR

Loft Area : 14'2 x 12'4 (4.32m x 3.76m)

### OUTSIDE

Garage  
Off road parking





## Main features

- Off road parking and garage
- Being sold with no onward chain
- Loft Extension creating additional space
- Character property with period features throughout
- Situated in a desirable location within moments of the high street and sea front



### Nearest Schools

Primary Schools: Deal Parochial C of E Primary 0.5 miles, The Downs C of E Primary 0.9 miles, Warden House Primary 1.0 miles

Secondary Schools: Goodwin Academy 0.6 miles,



### Transport Information

Train Stations: Deal 0.8 miles, Walmer 1.6 miles, Martin Mill 4.8 miles



### Address

Ravenscourt Road, Deal, Kent, CT14



### Directions

For directions to this property please contact us.





**Wards**  
Helping you move forwards

Call Deal Branch 01304 361420 ■ [wardsofkent.co.uk](http://wardsofkent.co.uk)



■ Legal advice should be taken to verify fixtures/fittings, planning, alterations and/or lease details ■ Appliances & services are untested, dimensions are approximate and floor plans are not to scale  
■ Through a Homewise Home For Life Plan people aged 60+ can secure this property for up to 59% less, by purchasing a Lifetime Lease.



10634584/20240112/WSM/WSM