



OVER 60?

Secure this property
for up to **59% less!**

Price
£350,000

Freehold

2x  1x  2x 

**Cheriton Place, Walmer,
Deal, Kent, CT14**

Wards
Helping you move forwards



Main features

- Located in a quiet street only minutes away from the beach
- Courtyard garden paved with Indian sandstone
- Tastefully presented throughout
- Garage to the rear that could be used as a home office with power and wireless internet

Accommodation

GROUND FLOOR

Porch

Lounge : 12'10 x 10'7 (3.91m x 3.23m)

Dining Area: 15'0 x 10'5 (4.58m x 3.18m)

Kitchen : 13'1 x 6'7 (3.99m x 2.01m)

FIRST FLOOR

Landing

Bedroom 1 : 12'11 x 10'7 (3.94m x 3.23m)

Bedroom 2 : 12'6 x 7'8 (3.81m x 2.34m)

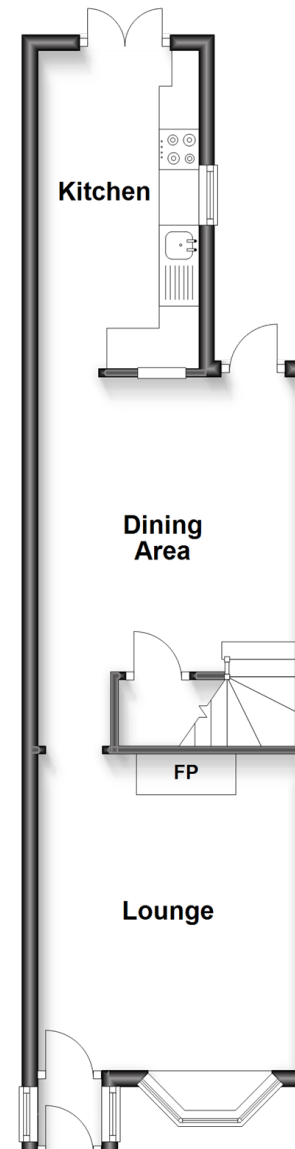
Bathroom

OUTSIDE

Front and Rear Garden

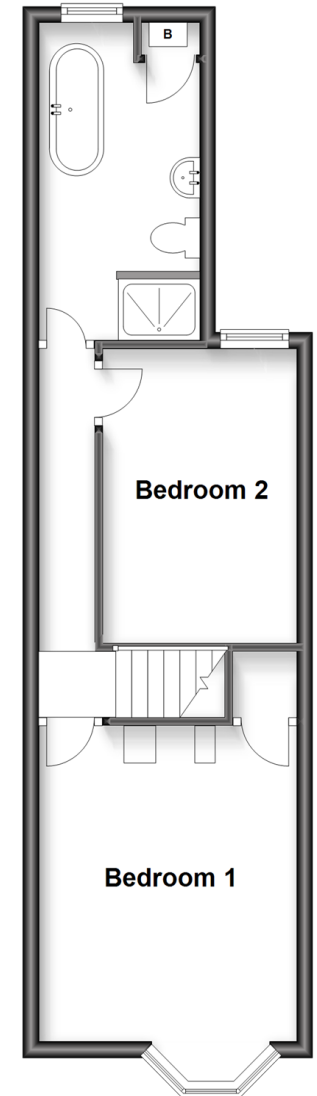
Ground Floor

Approx. 36.9 sq. metres (397.6 sq. feet)



Split Level First Floor

Approx. 36.2 sq. metres (389.8 sq. feet)



Call Deal - 01304 361420 ■ wardsforkent.co.uk

- Legal advice should be taken to verify fixtures/fittings, planning, alterations and/or lease details
- Appliances & services are untested, dimensions are approximate and floor plans are not to scale
- Through a Homewise Home For Life Plan people aged 60+ can secure this property for up to 59% less, by purchasing a Lifetime Lease.



10634608/20230624/BG/LB1