



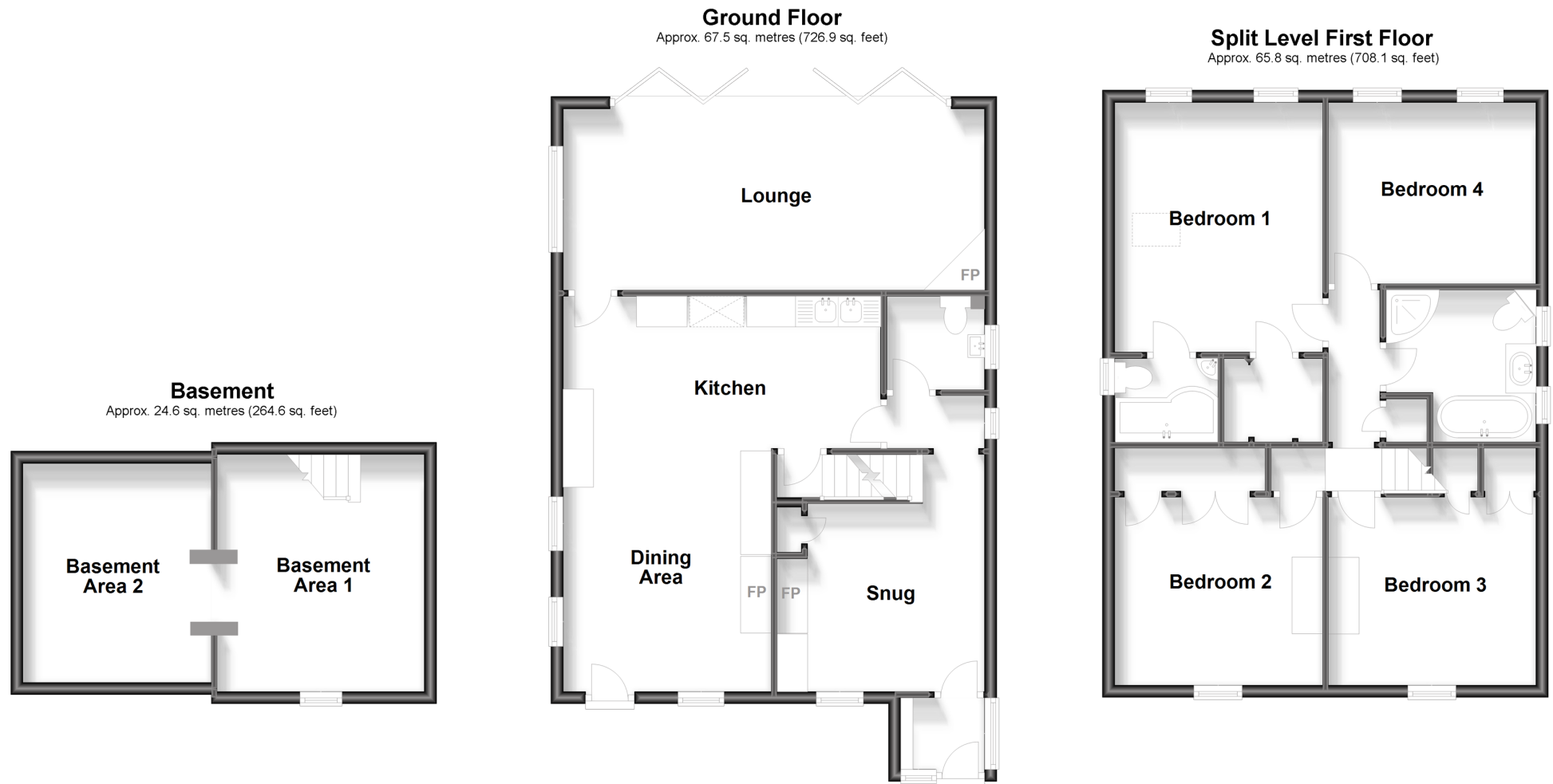
Price
£550,000

Freehold

4x  2x  2x 

**Belmont, Walmer, Deal,
Kent, CT14**

Wards
Helping you move forwards



Accommodation

BASEMENT

Basement Room 1: 12'9 x 11'2 (3.89m x 3.41m)

Basement Room 2 : 11'9 x 10'1 (3.58m x 3.08m)

GROUND FLOOR

Snug: 12'8 x 11'1 (3.86m x 3.38m)

Dining Area: 13'2 x 11'1 (4.02m x 3.38m)

Kitchen : 17'0 x 8'0 (5.19m x 2.44m)

Lounge : 22'7 x 9'7 (6.89m x 2.92m)

FIRST FLOOR

Bedroom 4: 10'11 x 10'7 (3.33m x 3.23m)

Bedroom 2 : 11'0 x 10'2 (3.36m x 3.10m)

Bathroom

Bedroom 3: 10'11 x 9'8 (3.33m x 2.95m)

Bedroom 1: 13'7 x 10'9 (4.14m x 3.28m)

OUTSIDE

Front and Rear Garden
Driveway



Main features

- **No Onward Chain**
- **Bi-folds to the rear leading into the generous garden**
- **Convenient location with local amenities and transport links nearby**
- **Tucked away from the road with a private gated drive for multiple vehicles**
- **Packed full of features including vaulted ceilings and two basement areas**



Nearest Schools

Primary Schools: The Downs C of E Primary 1.1 miles, St Mary's Catholic Primary 1.2 miles, Deal Parochial C of E Primary 1.3 miles

Secondary Schools: Goodwin Academy 0.8 miles,



Transport Information

Train Stations: Walmer 0.5 miles, Deal 2.2 miles, Martin Mill 3.3 miles



Address

Belmont, Walmer, Deal, Kent, CT14



Directions

For directions to this property please contact us.



Wards
Helping you move forwards

Call Deal Branch 01304 361420 ■ wardsofkent.co.uk



■ Legal advice should be taken to verify fixtures/fittings, planning, alterations and/or lease details ■ Appliances & services are untested, dimensions are approximate and floor plans are not to scale



10634617/20231202/BH/WSM