



Price
£370,000

Freehold

3x  1x  1x 

**The Rise, Kingsdown,
Deal, Kent, CT14**

OVER 60?

Secure this property
for up to **59% less!**

Wards
Helping you move forwards



Split Level Ground Floor
Approx. 65.5 sq. metres (705.5 sq. feet)

Main features

- **Spacious family house with potential to add your own stamp**
- **Private large sunny rear garden**
- **Garage and driveway parking**
- **Situated moments away from Ofsted outstanding Kingsdown school**
- **Updates done including some new windows and soffits.**

Accommodation

GROUND FLOOR

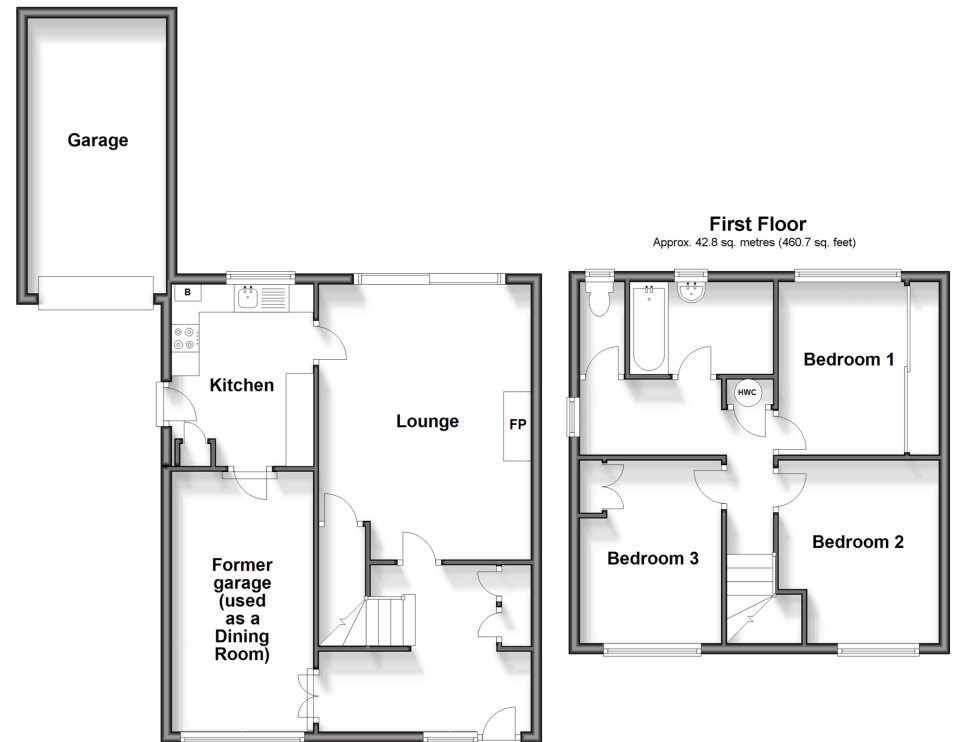
Entrance Hallway
Former Garage/Dining Room: 16'1" x 8'7" (4.91m x 2.62m)
Lounge : 16'3" x 13'6" (4.96m x 4.12m)
Kitchen : 11'1" x 8'5" (3.38m x 2.57m)

FIRST FLOOR

Landing
Bedroom 2: 10'8" x 10'5" (3.25m x 3.18m)
Bedroom 1: 11'2" x 8'8" (3.41m x 2.64m)
Bathroom
Seperate Toilet
Bedroom 3: 10'5" x 8'8" (3.18m x 2.64m)

OUTSIDE

Driveway
Garage
Front and Rear Gardens



Call Deal - 01304 361420 ■ wardsofkent.co.uk

■ Legal advice should be taken to verify fixtures/fittings, planning, alterations and/or lease details
■ Through a Homewise Home For Life Plan people aged 60+ can secure this property for up to 59% less, by purchasing a Lifetime Lease.

■ Appliances & services are untested, dimensions are approximate and floor plans are not to scale



10634642/20240425/LB1/LB1