



Price

£300,000

Freehold

3x  1x  1x 

**Anglers Drive, Sholden,
Deal, Kent, CT14**

Wards
Helping you move forwards



Main features

- Semi-detached house ideally first time buyer or investment
- Car barn parking for three vehicles
- Spacious lounge/diner with french doors leading to the garden
- Downstairs Cloakroom
- Situated within the sholden fields development, only minutes from betteshanger park

Accommodation

GROUND FLOOR

Entrance Hall
Cloakroom
Kitchen: 9'11 x 8'6 (3.02m x 2.59m)
Lounge/Diner: 15'1 x 14'3 (4.60m x 4.35m)

FIRST FLOOR

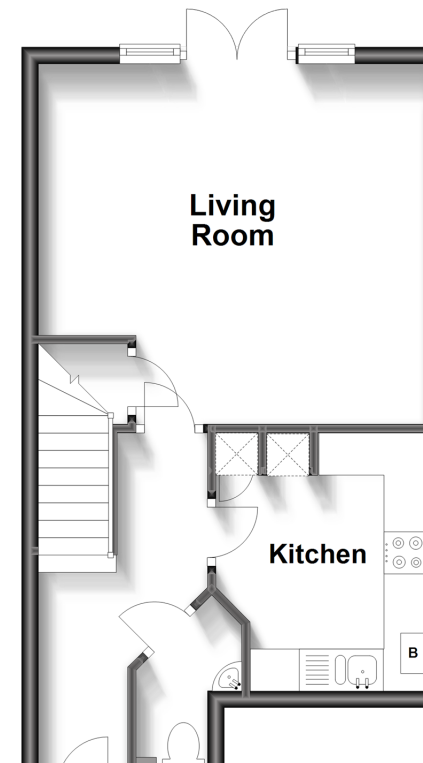
Bedroom 3: 10'2 x 6'7 (3.10m x 2.01m)
Bedroom 1: 11'6 x 8'2 (3.51m x 2.49m)
Bedroom 2: 10'10 x 8'3 (3.30m x 2.52m)
Bathroom

OUTSIDE

Car Barn parking
Rear Garden

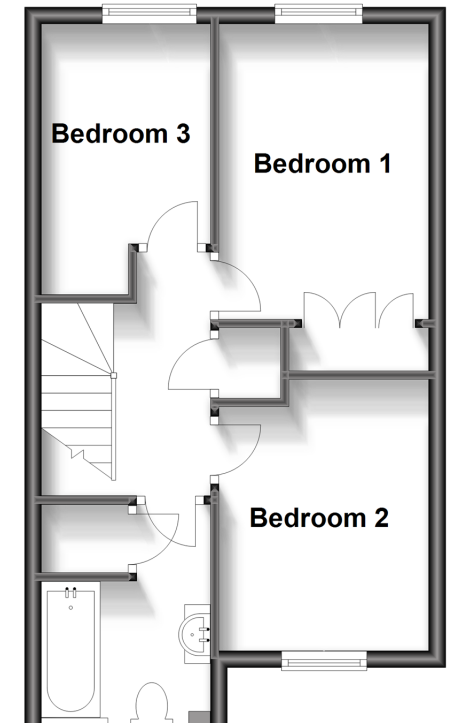
Ground Floor

Approx. 36.3 sq. metres (391.2 sq. feet)



First Floor

Approx. 36.3 sq. metres (391.2 sq. feet)



Call Deal - 01304 361420 ■ wardsokent.co.uk

- Legal advice should be taken to verify fixtures/fittings, planning, alterations and/or lease details
- Appliances & services are untested, dimensions are approximate and floor plans are not to scale



10634664/20230810/EP/LB1