



OVER 60?

Secure this property
for up to **59% less!**

Price
£400,000

Freehold

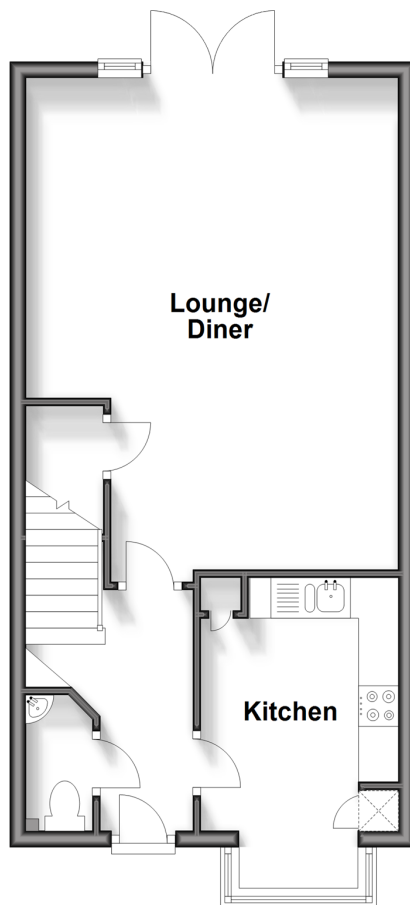
4x  2x  1x 

**Elliot Way, Sholden,
Deal, Kent, CT14**

Wards
Helping you move forwards

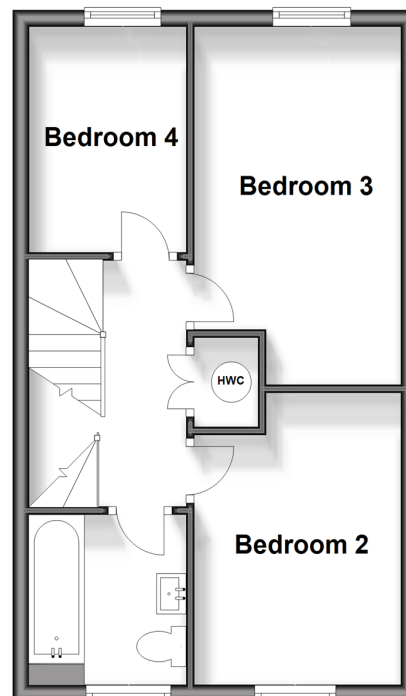
Ground Floor

Approx. 44.1 sq. metres (475.0 sq. feet)



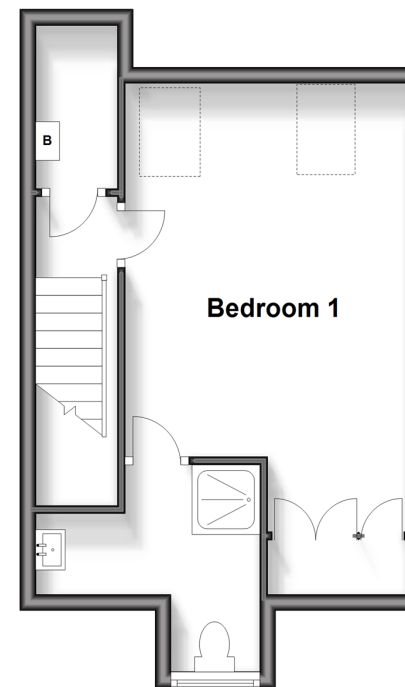
First Floor

Approx. 38.2 sq. metres (410.8 sq. feet)



Second Floor

Approx. 31.4 sq. metres (338.3 sq. feet)



Accommodation

GROUND FLOOR

Entrance Hallway

Cloakroom

Kitchen : 13'2 x 8'1 (4.02m x 2.47m)

Lounge/Diner : 20'0 x 15'1 (6.10m x 4.60m)

FIRST FLOOR

Landing

Bedroom 2: 12'5 x 8'3 (3.79m x 2.52m)

Bedroom 3: 12'3 x 8'3 (3.74m x 2.52m)

Bedroom 4: 9'1 x 6'5 (2.77m x 1.96m)

Bathroom

SECOND FLOOR

Landing

Bedroom 1: 18'2 x 11'4 (5.54m x 3.46m)

En-suite Shower Room

OUTSIDE

Front and Rear Gardens

Car Barn and Driveway



Main features

- Spacious family home with large bedrooms
- Large main bedroom with fitted wardrobes and en-suite shower room
- Car barn and driveway parking for 2 cars
- Located in a quiet corner of the Sholden Fields development, minutes from open countryside
- Popular location for families, within walking distance of 3 primary schools



Nearest Schools

Primary Schools: Sholden C of E Primary 0.4 miles, Hornbeam Primary 0.7 miles, St Mary's Catholic Primary 1.4 miles. Secondary Schools: Brewood Secondary School 1.3 miles, Goodwin Academy 1.5 miles, Goodwin Academy 2.2 miles



Transport Information

Train Stations: Deal 1.7 miles, Walmer 2.4 miles, Sandwich 4.1 miles



Address

Elliot Way, Sholden, Deal, Kent, CT14



Directions

For directions to this property please contact us.



Wards
Helping you move forwards

Call Deal Branch 01304 361420 ■ wardsofkent.co.uk



■ Legal advice should be taken to verify fixtures/fittings, planning, alterations and/or lease details ■ Appliances & services are untested, dimensions are approximate and floor plans are not to scale
■ Through a Homewise Home For Life Plan people aged 60+ can secure this property for up to 59% less, by purchasing a Lifetime Lease.



10634671/20240109/LB1/LB1