



Price

£1,150,000

Freehold

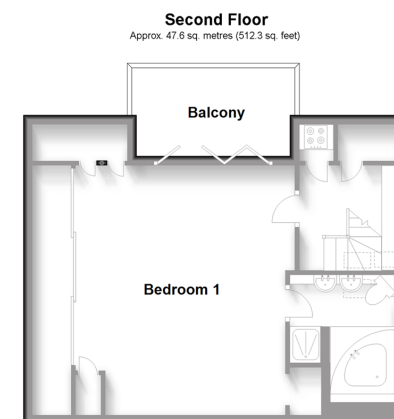
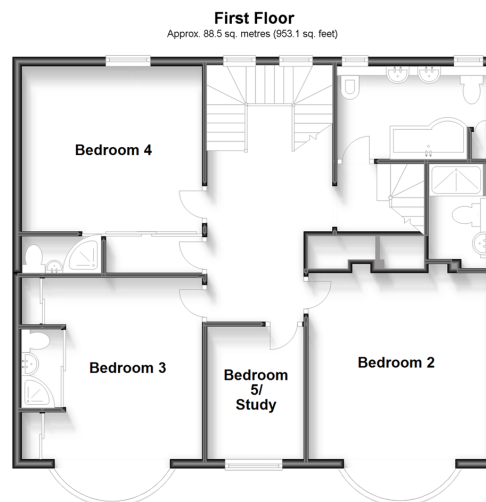
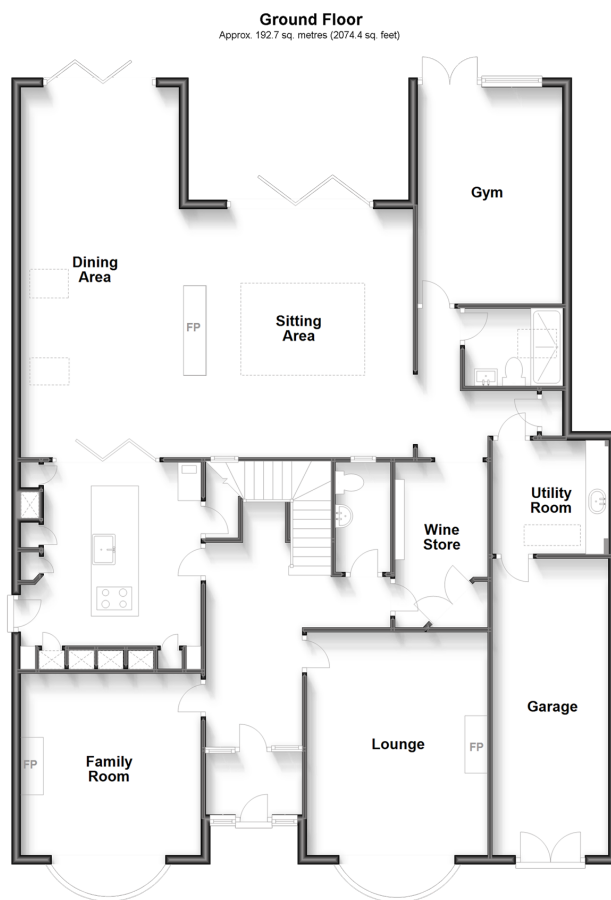
5x  6x  4x 

**London Road, Deal,
Kent, CT14**

OVER 60?

Secure this property
for up to **59% less!**

Wards
Helping you move forwards



Accommodation

GROUND FLOOR

Entrance Porch

Entrance Hallway

Family Room : 15'9 x 12'11 (4.80m x 3.94m)

Lounge: 16'0 x 13'6 (4.88m x 4.12m)

Kitchen : 13'1 x 13'1 (3.99m x 3.99m)

Dining Area : 25'10 x 10'10 (7.88m x 3.30m)

Sitting Area : 17'9 x 14'10 (5.41m x 4.52m)

Wine store

Utility

Shower Room

Gym: 15'5 x 10'11 (4.70m x 3.33m)

FIRST FLOOR

Landing

Bedroom 4: 14'4 x 12'11 (4.37m x 3.94m)

En-suite 4

Bedroom 3: 15'4 x 12'11 (4.68m x 3.94m)

En-suite 3

Bedroom 5/Study: 9'6 x 7'1 (2.90m x 2.16m)

Bedroom 2: 18'5 x 13'0 (5.62m x 3.97m)

En-suite 2

Bathroom 1

SECOND FLOOR

Landing

Bedroom 1 : 17'10 x 14'3 (5.44m x 4.35m)

Bathroom 2

Balcony

OUTSIDE

In and Out Driveway

Integral Garage

Front and Rear Garden



Main features

- In and out driveway and integral garage
- Large rear extension with two sets of bi-fold doors, creating perfect indoor and outdoor living
- Spacious master suite with balcony overlooking garden
- En-suites to all four double bedrooms
- Generous sunny rear garden with workshop, power points and light, along with a large storage shed



Nearest Schools

Primary Schools: Warden House Primary 0.5 miles, Deal Parochial C of E Primary 0.5 miles, Sholden C of E Primary 0.7 miles

Secondary Schools: Goodwin Academy 0.7 miles,



Transport Information

Train Stations: Deal 0.3 miles, Walmer 1.2 miles, Martin Mill 3.9 miles



Address

London Road, Deal, Kent, CT14



Directions

For directions to this property please contact us.



Wards
Helping you move forwards

Call Deal Branch 01304 361420 ■ wardsofkent.co.uk



■ Legal advice should be taken to verify fixtures/fittings, planning, alterations and/or lease details ■ Appliances & services are untested, dimensions are approximate and floor plans are not to scale
■ Through a Homewise Home For Life Plan people aged 60+ can secure this property for up to 59% less, by purchasing a Lifetime Lease.



10634678/20231016/BG/LB1