



OVER 60?

Secure this property
for up to **59% less!**

Price

£700,000

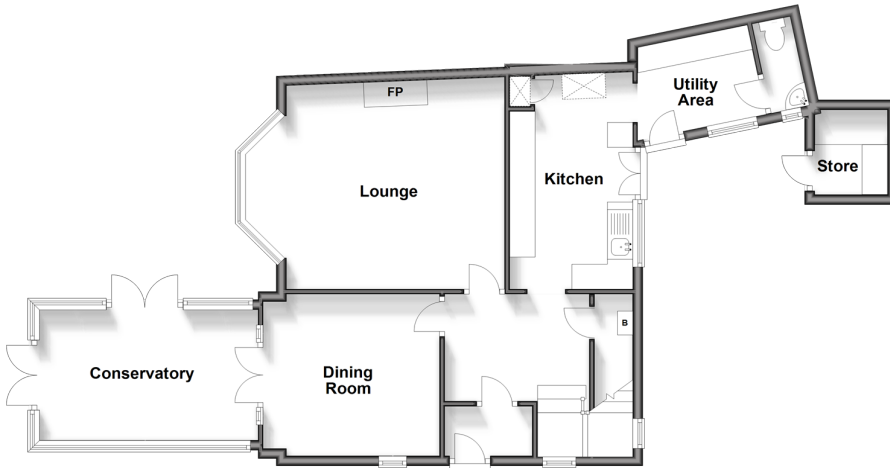
Freehold

4x  2x  3x 

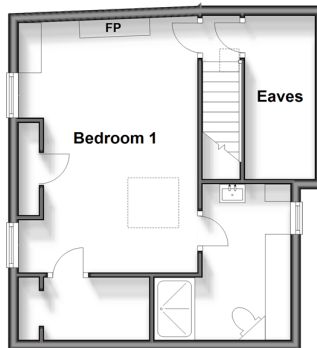
**Hawksdown, Walmer,
Deal, Kent, CT14**

Wards
Helping you move forwards

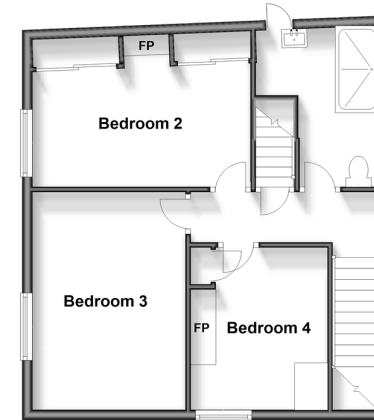
Ground Floor
Approx. 73.6 sq. metres (792.5 sq. feet)



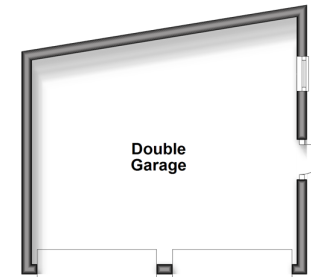
Second Floor
Approx. 36.2 sq. metres (389.2 sq. feet)



First Floor
Approx. 51.6 sq. metres (555.7 sq. feet)



Outbuilding
Approx. 23.7 sq. metres (254.7 sq. feet)



Accommodation

GROUND FLOOR

Entrance Porch
Entrance Hallway
Dining Room: 11'4 x 10'8 (3.46m x 3.25m)
Conservatory : 14'1 x 8'9 (4.30m x 2.67m)
Lounge : 14'1 x 8'9 (4.30m x 2.67m)
Kitchen : 14'0 x 7'10 (4.27m x 2.39m)
Utility : 7'9 x 6'0 (2.36m x 1.83m)
Cloakroom

FIRST FLOOR

Landing
Shower Room
Bedroom 2: 14'3 x 9'3 (4.35m x 2.82m)
Bedroom 3: 10'8 x 8'10 (3.25m x 2.69m)
Bedroom 4: 16'0 x 10'0 (4.88m x 3.05m)

SECOND FLOOR

Bedroom 1: 14'3 x 9'10 (4.35m x 3.00m)
En- Suite Shower Room

OUTSIDE

Store
Double Garage
Front and Rear Gardens



Main features

- Many original and period features
- Exclusive road only minutes from shops and bus route
- Substantial plot making a wonderful family house
- Private rear garden overlooking pretty flint garage and additional separate courtyard
- Undergone numerous improvements including new kitchen, offered chain free and ready to move into



Nearest Schools

Primary Schools: The Downs C of E Primary 0.5 miles, Kingsdown and Ringwould CofE Primary 0.8 miles, Deal Parochial C of E Primary 1.0 miles
Secondary Schools: Goodwin Academy 0.3, Ripplevale School 1.1 miles



Transport Information

Train Stations: Walmer 0.4 miles, Deal 1.6 miles, Martin Mill 2.6 miles



Address

Hawksdown, Walmer, Deal, Kent, CT14



Directions

For directions to this property please contact us.



Call Deal Branch 01304 361420 ■ wardsofkent.co.uk



- Legal advice should be taken to verify fixtures/fittings, planning, alterations and/or lease details
- Appliances & services are untested, dimensions are approximate and floor plans are not to scale
- Through a Homewise Home For Life Plan people aged 60+ can secure this property for up to 59% less, by purchasing a Lifetime Lease.



10634684/20240125/BG/LB1