



Price

£170,000

Leasehold

2x  1x  1x 

**Wellington Court,
Beechwood Avenue,
Deal, Kent, CT14**

OVER 60?

Secure this property
for up to **59% less!**

Wards
Helping you move forwards



Main features

- **Second floor apartment with 2 double bedrooms**
- **Comes with access to resident parking**
- **Well kept communal areas and private key fob access**
- **Spacious double aspect lounge/dining area**
- **Situated close to Deal high street within walking distance to all amenities**

Accommodation

SECOND FLOOR

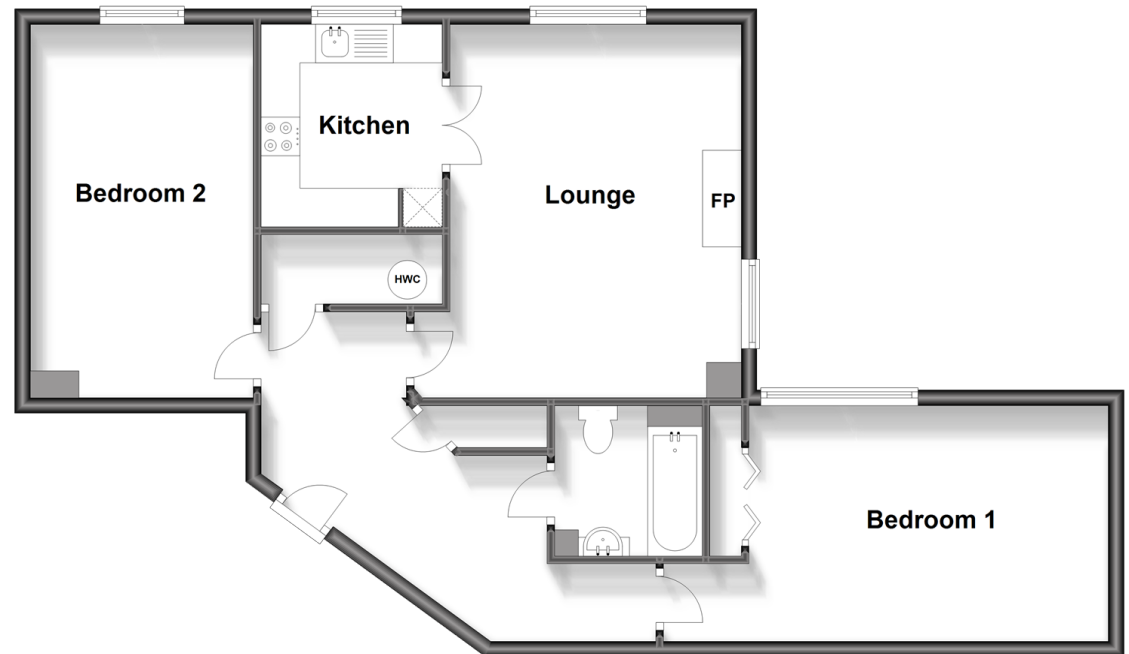
Entrance Hallway
 Bedroom 1: 15'9 x 9'3 (4.80m x 2.82m)
 Bathroom
 Lounge : 15'9 x 12'5 (4.80m x 3.79m)
 Kitchen : 8'7 x 6'9 (2.62m x 2.06m)
 Bedroom 2: 14'8 x 9'7 (4.47m x 2.92m)

OUTSIDE

Residents Parking
 Communal Garden

Second Floor

Approx. 74.9 sq. metres (806.7 sq. feet)



Call Deal - 01304 361420 ■ wardsofkent.co.uk

■ Legal advice should be taken to verify fixtures/fittings, planning, alterations and/or lease details
 ■ Through a Homewise Home For Life Plan people aged 60+ can secure this property for up to 59% less, by purchasing a Lifetime Lease.

■ Appliances & services are untested, dimensions are approximate and floor plans are not to scale