



**Price**  
**£150,000**

**Leasehold**

3x  1x  1x 

**Kingsdown Park, Upper  
Street, Kingsdown, Deal,  
Kent, CT14**

*Wards*  
Helping you move forwards





## Main features

- Semi-detached park home with decking to the front and clear sea views
- Located within a sought after quiet area of the holiday park
- Immaculate condition throughout and ready to use
- Living room has been extended to the front
- Within walking distance of Kingsdown beach and local amenities

## Accommodation

### GROUND FLOOR

Lounge: 16'4 x 13'4 (4.98m x 4.07m)  
 Bathroom  
 Kitchen : 7'8 x 6'4 (2.34m x 1.93m)  
 Bedroom 3: 9'10 x 9'7 (3.00m x 2.92m)

### FIRST FLOOR

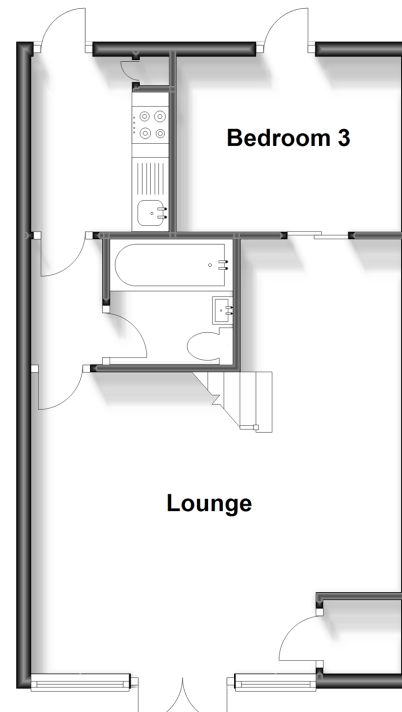
Bedroom 1: 10'5 x 10'4 (3.18m x 3.15m)  
 Toilet  
 Bedroom 2: 9'11 x 7'8 (3.02m x 2.34m)

### OUTSIDE

Decking to Front and Rear

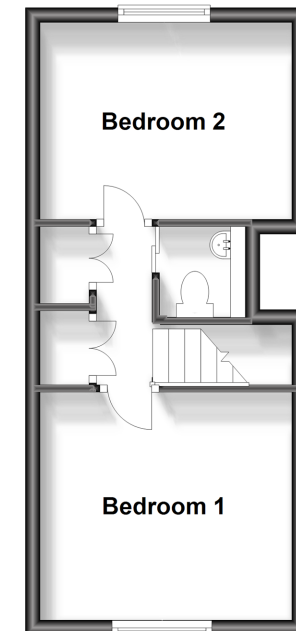
### Ground Floor

Approx. 41.6 sq. metres (447.6 sq. feet)



### First Floor

Approx. 26.5 sq. metres (285.3 sq. feet)



**Call Deal - 01304 361420 ■ [wardsofkent.co.uk](http://wardsofkent.co.uk)**

- If buying to let, the energy rating will need to be improved to at least 'E' rating before you can let the property
- Appliances & services are untested, dimensions are approximate and floor plans are not to scale

- Legal advice should be taken to verify fixtures/fittings, planning, alterations and/or lease details



10634698/20230624/BG/WSM