



OVER 60?

Secure this property
for up to **59% less!**

Price

£250,000

Leasehold

2x  1x  1x 

**Lloyd Court, High
Street, Deal, Kent, CT14**

Wards
Helping you move forwards



Main features

- Top floor apartment with excellent views
- Comes with resident car park
- Can be sold fully/Partly furnished
- Recently redecorated throughout and ready to move into
- Within moments of Deal town centre and sea front

Accommodation

THIRD FLOOR

Entrance Hallway

Lounge/Diner: 16'3 x 12'7 (4.96m x 3.84m)

Kitchen : 6'10 x 5'7 (2.08m x 1.70m)

Wet room

Bedroom 2: 12'8 x 7'10 (3.86m x 2.39m)

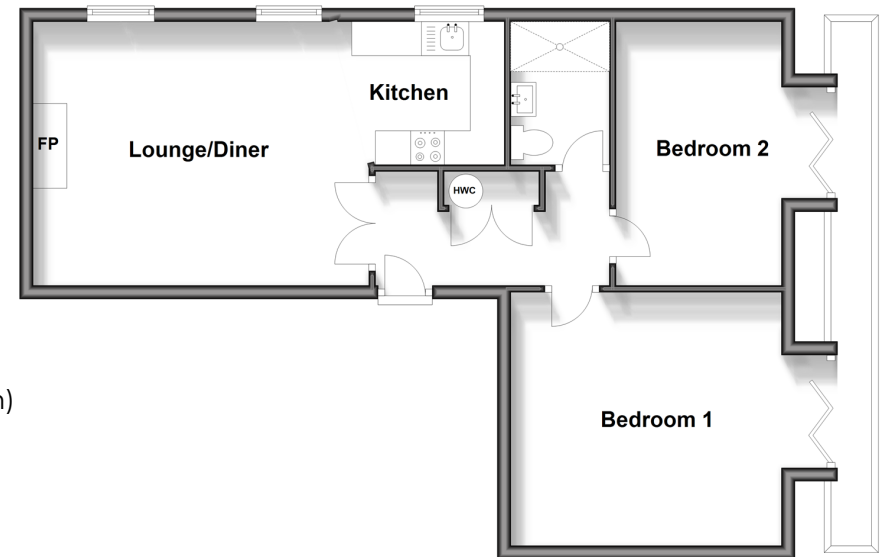
Bedroom 1: 12'11 x 12'1 (3.94m x 3.69m)

OUTSIDE

Balcony

Resident Parking

Third Floor
Approx. 60.4 sq. metres (650.5 sq. feet)



Call Deal - 01304 361420 ■ wardsofkent.co.uk

- Legal advice should be taken to verify fixtures/fittings, planning, alterations and/or lease details
- Appliances & services are untested, dimensions are approximate and floor plans are not to scale
- Through a Homewise Home For Life Plan people aged 60+ can secure this property for up to 59% less, by purchasing a Lifetime Lease.



10634704/20240123/EP/WSM