



**Price**

**£200,000**

**Leasehold**

2x  1x  1x 

**Jubilee Road, Sandwich,  
Kent, CT13**

*Wards*  
Helping you move forwards





## Main features

- Spacious apartment in quiet cul-de-sac
- Ample on street parking
- An ideal investment property
- Only a short walk to the train station and town centre
- New kitchen, bathroom and boiler within the last 3 years

## Accommodation

### SECOND FLOOR

Entrance Hallway

Bedroom 1: 13'11 x 8'11 (4.24m x 2.72m)

Lounge: 13'10 x 10'3 (4.22m x 3.13m)

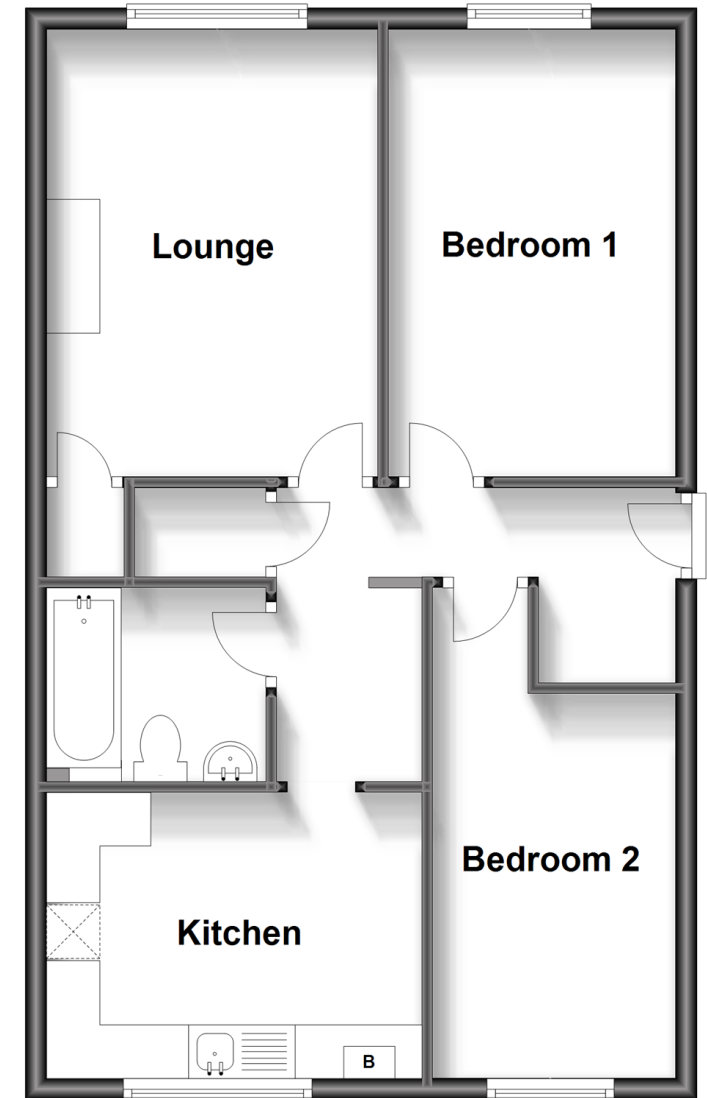
Bedroom 2 : 11'11 x 7'6 (3.63m x 2.29m)

Bathroom

Kitchen: 11'10 x 9'2 (3.61m x 2.80m)

## Second Floor

Approx. 57.8 sq. metres (622.6 sq. feet)



**Call Deal - 01304 361420 ■ [wardsofkent.co.uk](http://wardsofkent.co.uk)**

- Legal advice should be taken to verify fixtures/fittings, planning, alterations and/or lease details
- Appliances & services are untested, dimensions are approximate and floor plans are not to scale