



OVER 60?

Secure this property
for up to **59% less!**

Price

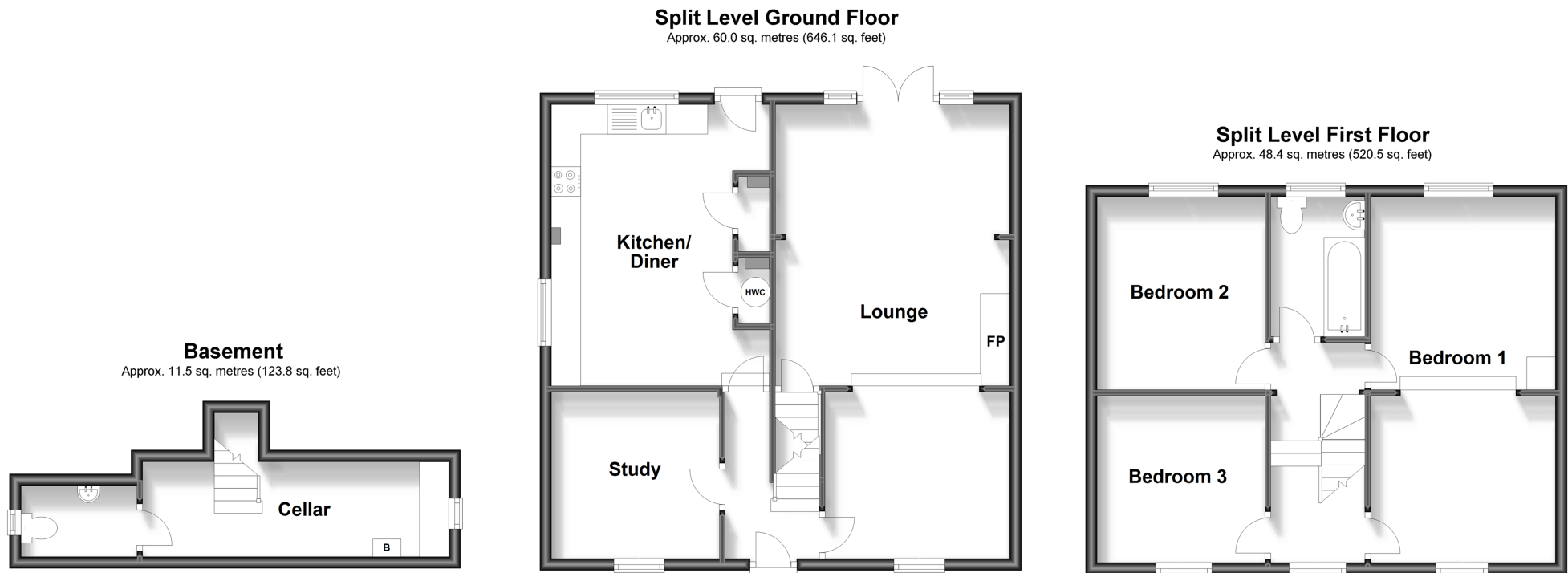
£400,000

Freehold

3x  1x  2x 

**St. Richard's Road, Deal,
Kent, CT14**

Wards
Helping you move forwards



Accommodation

BASEMENT

Cellar
Cloakroom

SPLIT LEVEL GROUND FLOOR

Entrance Hall
Study : 9'4 x 9'4 (2.85m x 2.85m)
Kitchen/Diner: 15'7 x 12'5 (4.75m x 3.79m)
Lounge : 25'9 x 13'1 (7.85m x 3.99m)

SPLIT LEVEL FIRST FLOOR

Landing
Bedroom 3: 9'4 x 9'3 (2.85m x 2.82m)
Bedroom 2: 11'0 x 9'4 (3.36m x 2.85m)
Bathroom
Bedroom 1: 21'0 x 10'4 (6.41m x 3.15m)

OUTSIDE

Front and Rear Gardens
Double Garage
Driveway



Main features

- Spacious and light, 4 bedroom detached Georgian house
- Filled with plenty of original character
- Double garage and driveway for multiple cars
- Large master bedroom which could be reinstated as two bedrooms
- Generous rear garden with large patio seating area



Nearest Schools

Primary Schools: Hornbeam Primary 0.2 miles, Sholden C of E Primary 0.3 miles, St Mary's Catholic Primary 0.4 miles

Secondary Schools: Goodwin Academy 0.9 miles,



Transport Information

Train Stations: Walmer 1.0 miles, Deal 1.3 miles, Martin Mill 3.3 miles



Address

St. Richard's Road, Deal, Kent, CT14



Directions

For directions to this property please contact us.





Wards
Helping you move forwards

Call Deal Branch 01304 361420 ■ wardsofkent.co.uk



- Legal advice should be taken to verify fixtures/fittings, planning, alterations and/or lease details
- Appliances & services are untested, dimensions are approximate and floor plans are not to scale
- Through a Homewise Home For Life Plan people aged 60+ can secure this property for up to 59% less, by purchasing a Lifetime Lease.



10634733/20231118/BG/LB1