



**OVER 60?**

Secure this property  
for up to **59% less!**

**Price**

**£462,500**

**Freehold**

5x  2x  2x 

**Dover Road, Walmer,  
Deal, Kent, CT14**

*Wards*  
Helping you move forwards





## Main features

- Off road parking for up to two cars
- Walled rear garden with side access
- Basement room providing great storage or conversion potential subject to planning
- Situated within walking distance of local shops and transport links
- Good condition throughout with a working log burner

## Accommodation

### BASEMENT

Cellar: 20'0 x 11'9 (6.10m x 3.58m)

### GROUND FLOOR

Lounge : 16'9 x 12'2 (5.11m x 3.71m)

Dining Room: 14'2 x 9'11 (4.32m x 3.02m)

Kitchen : 10'3 x 9'4 (3.13m x 2.85m)

### SPLIT LEVEL FIRST FLOOR

Bathroom

Bedroom 3: 13'5 x 10'5 (4.09m x 3.18m)

Bedroom 4: 13'11 x 11'11 (4.24m x 3.63m)

Bedroom 5: 9'9 x 9'7 (2.97m x 2.92m)

### SECOND FLOOR

Shower Room

Bedroom 1: 12'9 x 10'10 (3.89m x 3.30m)

Bedroom 2: 10'7 x 10'4 (3.23m x 3.15m)

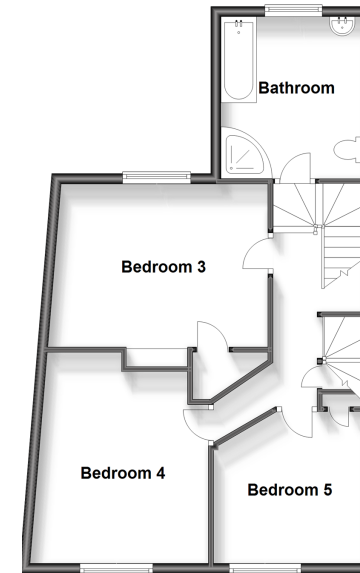
### OUTSIDE

Parking to Rear

Rear Garden

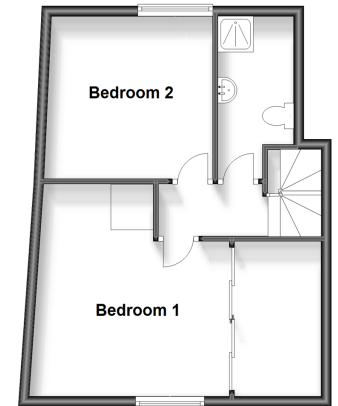
### Split Level First Floor

Approx. 56.1 sq. metres (604.3 sq. feet)



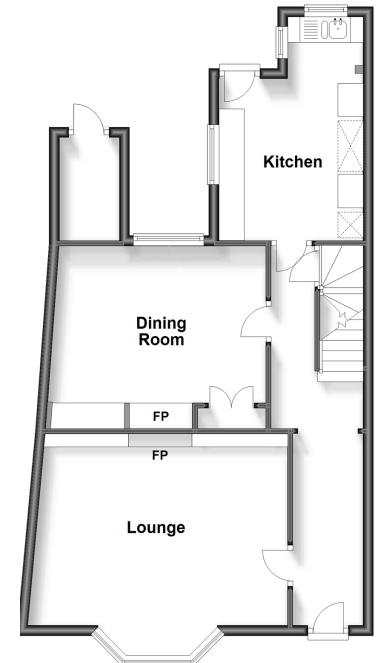
### Second Floor

Approx. 39.6 sq. metres (426.4 sq. feet)



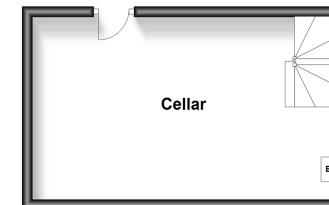
### Ground Floor

Approx. 60.7 sq. metres (653.5 sq. feet)



### Basement

Approx. 21.5 sq. metres (231.0 sq. feet)



**Call Deal - 01304 361420 ■ [wardsofkent.co.uk](http://wardsofkent.co.uk)**

- Legal advice should be taken to verify fixtures/fittings, planning, alterations and/or lease details
- Appliances & services are untested, dimensions are approximate and floor plans are not to scale
- Through a Homewise Home For Life Plan people aged 60+ can secure this property for up to 59% less, by purchasing a Lifetime Lease.



10634736/20230907/BH/WSM