



**Price**  
**£400,000**

3x  1x  2x 

**Back Street, Ringwould,  
Deal, Kent, CT14**

**OVER 60?**

Secure this property  
for up to **59% less!**

*Wards*  
Helping you move forwards

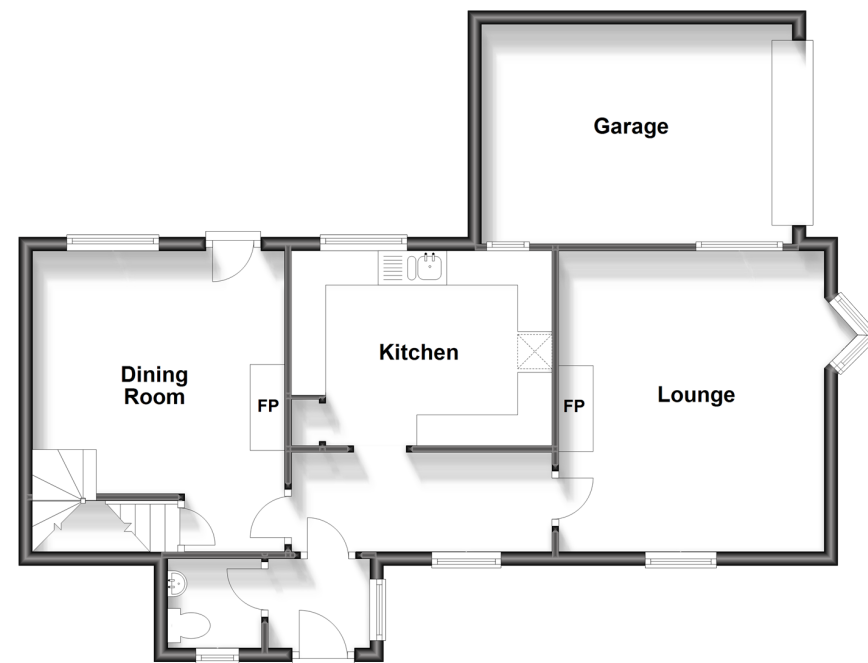
**Basement**  
Approx. 8.7 sq. metres (94.1 sq. feet)



**First Floor**  
Approx. 50.6 sq. metres (544.9 sq. feet)



**Ground Floor**  
Approx. 69.9 sq. metres (752.8 sq. feet)



## Accommodation

### BASEMENT

Cellar: 13'5 x 6'5 (4.09m x 1.96m)

### GROUND FLOOR

Entrance Porch

Cloakroom

Dining Room : 14'5 x 12'0 (4.40m x 3.66m)

Kitchen : 13'3 x 9'3 (4.04m x 2.82m)

Lounge : 15'2 x 12'9 (4.63m x 3.89m)

### FIRST FLOOR

Bedroom 2: 12'0 x 11'2 (3.66m x 3.41m)

Bedroom 3: 9'6 x 6'9 (2.90m x 2.06m)

Bathroom

Bedroom 1 : 14'11 x 12'9 (4.55m x 3.89m)

### OUTSIDE

Front and Rear Garden

Garage : 14'9 x 10'1 (4.50m x 3.08m)





## Main features

- 300 year old cottage filled with period features
- Useful cellar room
- Picturesque village location on a major bus route
- Attractive paved walled garden to the front of the property and private rear courtyard
- Many updates have been made including a new roof and windows 9 years ago and new boiler 2 years ago



## Nearest Schools

Primary Schools: Kingsdown and Ringwould CofE Primary 0.9 miles, The Downs C of E Primary 1.7 miles, St Mary's Catholic Primary 1.8 miles

Secondary Schools: Learning Opportunities Centre

## Transport Information

Train Stations: Walmer 1.3 miles, Martin Mill 1.4 miles, Deal 2.8 miles

## Address

Back Street, Ringwould, Deal, Kent, CT14

## Directions

For directions to this property please contact us.







*Wards*  
Helping you move forwards

Call Deal Branch 01304 361420 ■ [wardsofkent.co.uk](http://wardsofkent.co.uk)



- Legal advice should be taken to verify fixtures/fittings, planning, alterations and/or lease details
- Appliances & services are untested, dimensions are approximate and floor plans are not to scale
- Through a Homewise Home For Life Plan people aged 60+ can secure this property for up to 59% less, by purchasing a Lifetime Lease.



10634739/20230722/WSM/LB1