



**Price**  
**£800,000**

**Freehold**

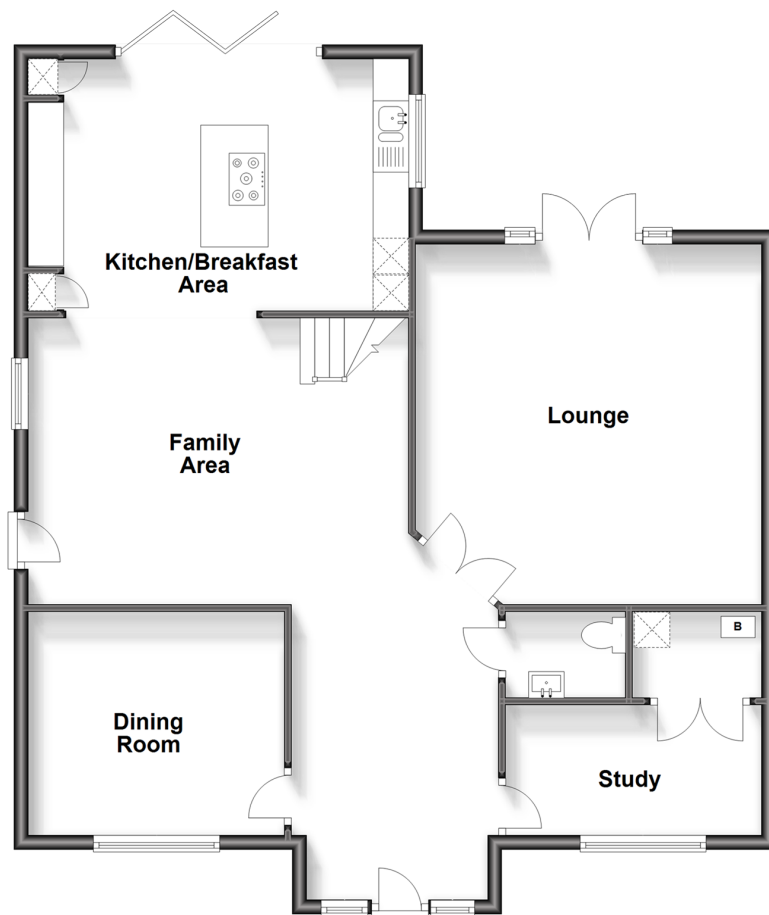
4x  3x  2x 

**Middle Deal Road, Deal,  
Kent, CT14**

*Wards*  
Helping you move forwards

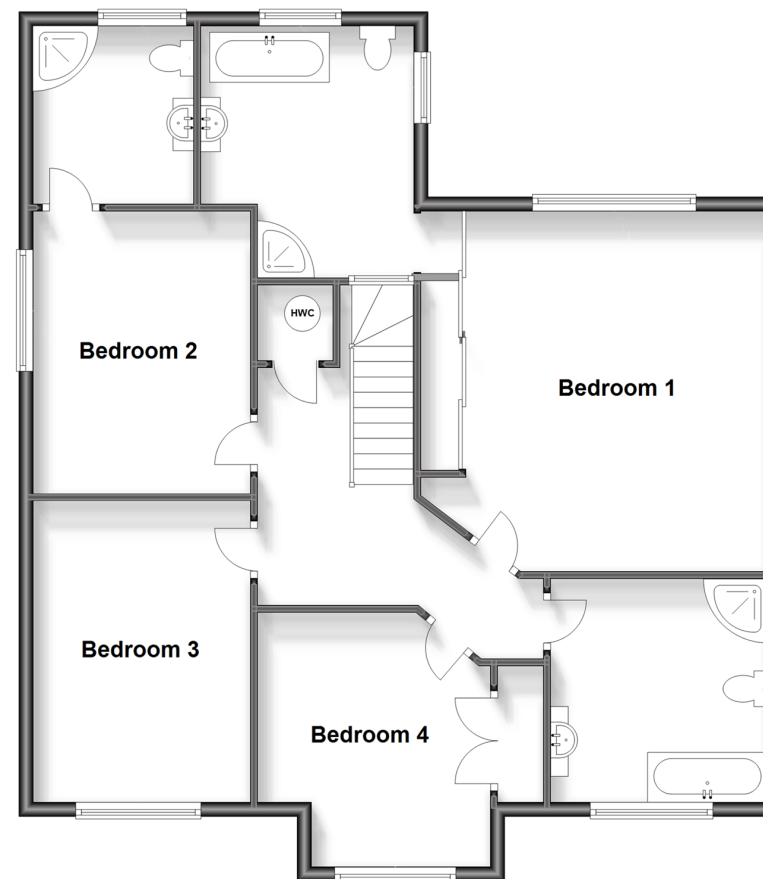
## Ground Floor

Approx. 101.6 sq. metres (1093.8 sq. feet)



## First Floor

Approx. 101.6 sq. metres (1093.4 sq. feet)



## Accommodation

### GROUND FLOOR

Entrance Hall

Dining Room: 12'2 x 10'4 (3.71m x 3.15m)

Family Area : 17'9 x 13'2 (5.41m x 4.02m)

Kitchen/Breakfast Area : 17'10 x 11'7 (5.44m x 3.53m)

Lounge: 16'8 x 15'1 (5.08m x 4.60m)

Cloakroom

Study : 11'10 x 6'1 (3.61m x 1.86m)

En-suite

Bathroom

Bedroom 4: 11'10 x 11'0 (3.61m x 3.36m)

Bedroom 3: 13'9 x 10'2 (4.19m x 3.10m)

Bedroom 2: 14'3 x 10'3 (4.35m x 3.13m)

En-suite

### OUTSIDE

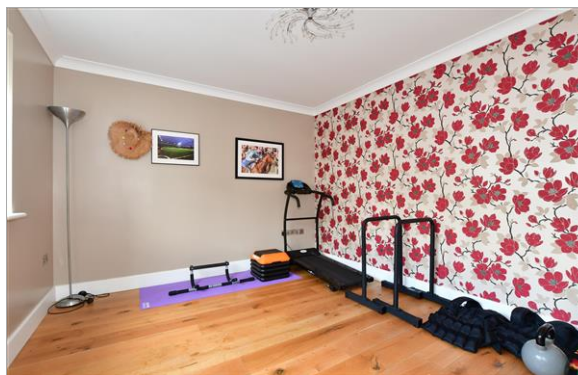
Driveway

Rear Garden

### FIRST FLOOR

Landing

Bedroom 1: 16'8 x 15'11 (5.08m x 4.85m)



## Main features

- Large spacious and light detached family home
- Two large en-suite's and family bathroom
- Driveway parking for several vehicles
- High specification throughout including modern kitchen with central island and bi-fold doors leading to garden
- Within walking distance of the town centre, train station and local schools



### Nearest Schools

Primary Schools: Warden House Primary 0.5 miles, Sandown School 0.7 miles, Sholden C of E Primary 0.9 miles

Secondary Schools: Brewood Secondary School 0.4 miles,



### Transport Information

Train Stations: Deal 0.6 miles, Walmer 2.1 miles, Sandwich 5.2 miles



### Address

Middle Deal Road, Deal, Kent, CT14



### Directions

For directions to this property please contact us.



Call Deal Branch 01304 361420 ■ [wardsofkent.co.uk](http://wardsofkent.co.uk)



■ Legal advice should be taken to verify fixtures/fittings, planning, alterations and/or lease details ■ Appliances & services are untested, dimensions are approximate and floor plans are not to scale



10634760/20230809/LB1/LB1