



Price

£350,000

Freehold

3x  1x  1x 

**Mill Lane, Northbourne,
Deal, Kent, CT14**

Wards
Helping you move forwards



Ground Floor

Approx. 49.3 sq. metres (530.7 sq. feet)

Main features

- Surrounded by stunning countryside views
- Large front and rear gardens
- Potential to add driveway to front of property subject to planning permission
- Peaceful rural location only a short drive from Deals town centre and beach
- Lots of original features and the potential to apply your own stamp

Accommodation

GROUND FLOOR

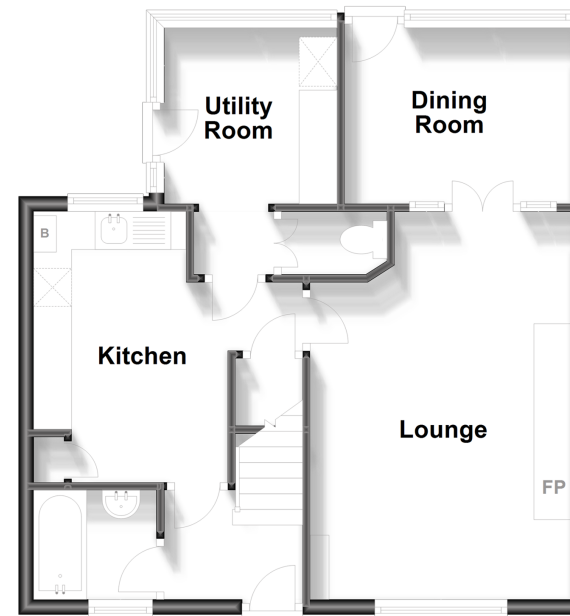
Entrance Hallway
Bathroom
Kitchen : 11'8 x 6'7 (3.56m x 2.01m)
Cloakroom
Utility Area : 7'10 x 7'5 (2.39m x 2.26m)
Conservatory : 9'10 x 8'1 (3.00m x 2.47m)
Lounge: 17'3 x 10'2 (5.26m x 3.10m)

FIRST FLOOR

Landing
Bedroom 1 : 13'1 x 12'7 (3.99m x 3.84m)
Toilet
Bedroom 3: 9'1 x 7'11 (2.77m x 2.41m)
Bedroom 2: 10'3 x 8'9 (3.13m x 2.67m)

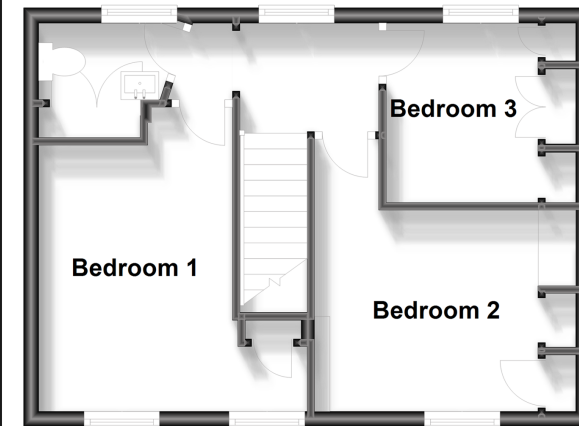
OUTSIDE

Driveway
Front and Rear Garden



First Floor

Approx. 36.6 sq. metres (394.0 sq. feet)



Call Deal - 01304 361420 ■ wardsofkent.co.uk

■ Legal advice should be taken to verify fixtures/fittings, planning, alterations and/or lease details

■ Appliances & services are untested, dimensions are approximate and floor plans are not to scale



10634761/20230815/LB1/LB1