



Price

£110,000

Leasehold

1x  1x  1x 

**Queens Mews, Queen
Street, Deal, Kent, CT14**

OVER 60?

Secure this property
for up to **59% less!**

Wards
Helping you move forwards



Main features

- Ground floor apartment with residents parking
- Situated centrally within Deal moments from the high street
- Low maintenance and well kept communal areas
- Benefits from a wet room with a pumped waste system
- Only a short walk from the beach

Accommodation

GROUND FLOOR

Entrance Hallway

Lounge: 16'4 x 10'8 (4.98m x 3.25m)

Kitchen: 6'10 6 x 6'9 (2.08m x 2.06m)

Wet Room

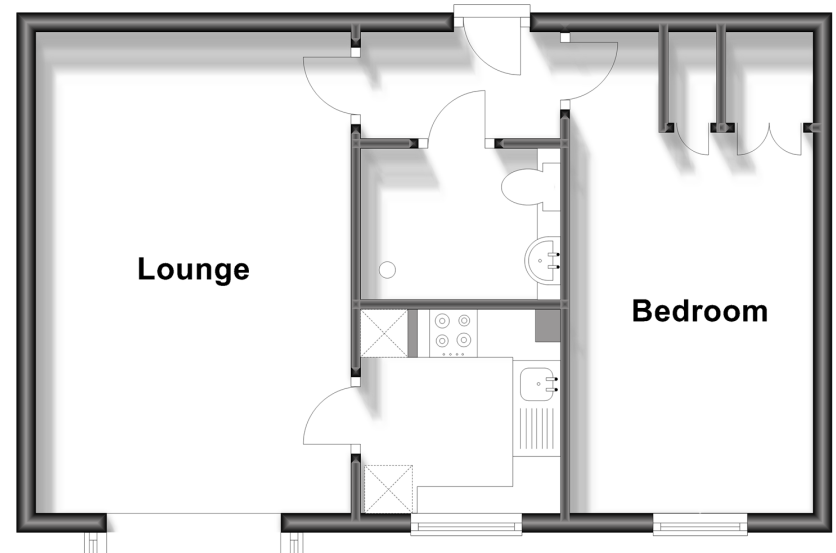
Bedroom: 12'2 x 8'5 (3.71m x 2.57m)

OUTSIDE

Communal Area

Ground Floor

Approx. 41.6 sq. metres (447.5 sq. feet)



Call Deal - 01304 361420 ■ wardsofkent.co.uk

■ Legal advice should be taken to verify fixtures/fittings, planning, alterations and/or lease details
 ■ Through a Homewise Home For Life Plan people aged 60+ can secure this property for up to 59% less, by purchasing a Lifetime Lease.

■ Appliances & services are untested, dimensions are approximate and floor plans are not to scale