



Price
£625,000

Freehold

3x  2x  3x 

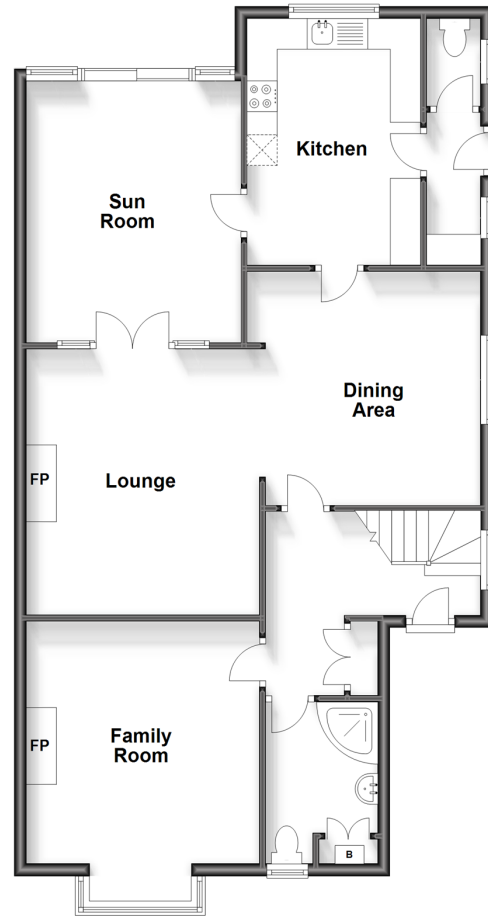
**Warwick Road, Deal,
Kent, CT14**

OVER 60?

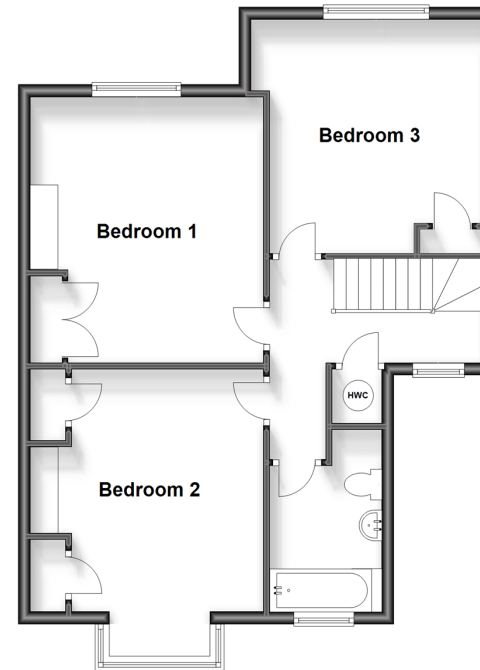
Secure this property
for up to **59% less!**

Wards
Helping you move forwards

Ground Floor
Approx. 93.3 sq. metres (1003.8 sq. feet)



First Floor
Approx. 61.6 sq. metres (662.6 sq. feet)



Accommodation

GROUND FLOOR

Entrance Hall
Shower Room
Family Room: 12'11 x 12'5 (3.94m x 3.79m)
Cloakroom
Kitchen: 13'0 x 11'0 (3.97m x 3.36m)
Utility Area
Dining Room: 12'4 x 12'0 (3.76m x 3.66m)
Lounge: 14'6 x 12'4 (4.42m x 3.76m)
Conservatory: 14'0 x 11'1 (4.27m x 3.38m)

FIRST FLOOR

Landing
Bathroom
Bedroom 1: 14'3 x 12'4 (4.35m x 3.76m)
Bedroom 2: 12'11 x 11'3 (3.94m x 3.43m)
Bedroom 3: 12'5 x 11'8 (3.79m x 3.56m)

OUTSIDE

Off-Road Parking
Garage
Front & Rear Gardens



Main features

- Stunning family home with vaulted ceiling in kitchen
- Potential to extend upwards into the loft (Subject to Planning)
- Comes with a large driveway and garage
- Packed full of character features including bay windows
- Sunny aspect garden to the rear with patio area.



Nearest Schools

Primary Schools: The Downs C of E Primary 0.3 miles, Deal Parochial C of E Primary 0.3 miles, St Mary's Catholic Primary 1.0 miles

Secondary Schools: Goodwin Academy 0.4 miles,



Transport Information

Train Stations: Walmer 0.7 miles, Deal 1.0 miles, Martin Mill 3.3 miles



Address

Warwick Road, Deal, Kent, CT14



Directions

For directions to this property please contact us.





Call Deal Branch 01304 361420 ■ wardsofkent.co.uk



- Legal advice should be taken to verify fixtures/fittings, planning, alterations and/or lease details
- Appliances & services are untested, dimensions are approximate and floor plans are not to scale
- Through a Homewise Home For Life Plan people aged 60+ can secure this property for up to 59% less, by purchasing a Lifetime Lease.



10634783/20240116/BG/WSM