



**OVER 60?**

Secure this property  
for up to **59% less!**

**Price**

**£290,000**

**Freehold**

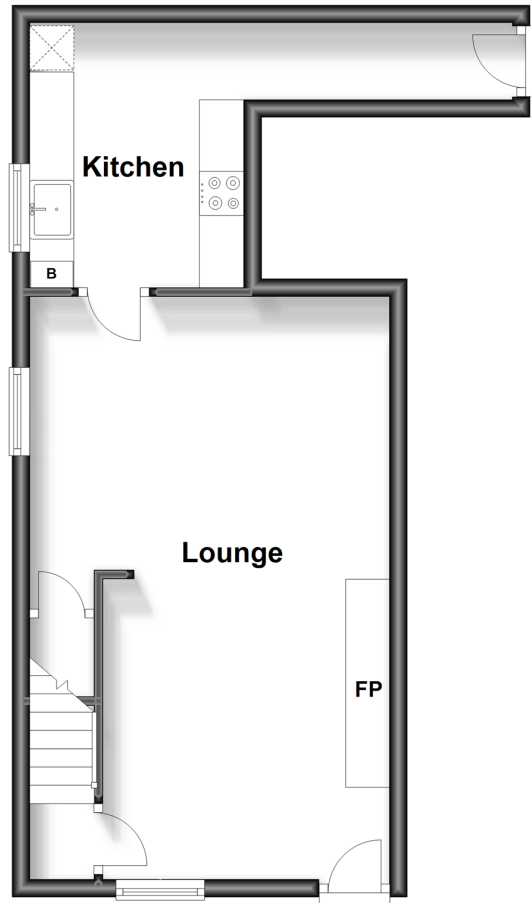
3x  1x  1x 

**Russell Cottages, The  
Street,  
Woodnesborough,  
Sandwich, Kent, CT13**

*Wards*  
Helping you move forwards

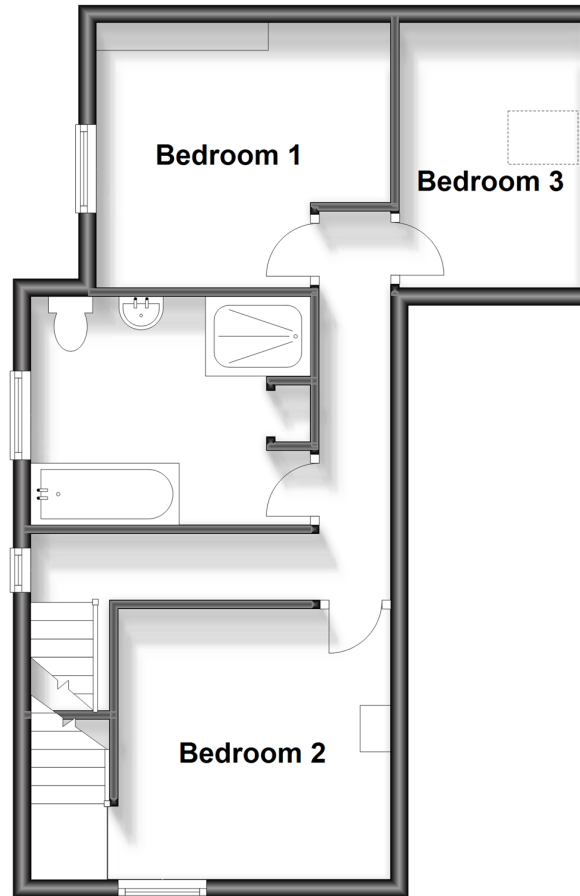
## Ground Floor

Approx. 37.1 sq. metres (398.8 sq. feet)



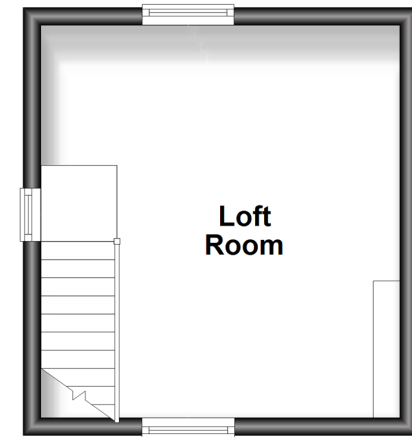
## First Floor

Approx. 43.7 sq. metres (470.1 sq. feet)



## Second Floor

Approx. 18.1 sq. metres (195.1 sq. feet)



## Accommodation

### GROUND FLOOR

Entrance Hallway

Kitchen : 10'0 x 8'4 (3.05m x 2.54m)

Lounge : 21'11 x 13'4 (6.68m x 4.07m)

### FIRST FLOOR

Landing

Office : 10'2 x 10'1 (3.10m x 3.08m)

Bathroom

Bedroom 1: 11'3 x 9'0 (3.43m x 2.75m)

Bedroom 2: 9'8 x 6'9 (2.95m x 2.06m)

### SECOND FLOOR

Loft Room

### OUTSIDE

Rear Garden





## Main features

- Period cottage in village location
- A short drive to Sandwich and train station
- Low maintenance garden
- Full of character including a large fireplace and exposed beams and painted floorboards
- Large spacious bathroom with bath and separate shower cubicle



### Nearest Schools

Primary Schools: Sandwich Junior School 1.1 miles, Eastry C of E Primary 1.2 miles, Worth Primary 1.7 miles

Secondary Schools: Sandwich Technology School 1.1 miles, Sir Roger Manwood's School 1.5 miles, Great Oaks



### Transport Information

Train Stations: Sandwich 1.4 miles, Deal 4.8 miles, Walmer 5.3 miles



### Address

Russell Cottages, The Street, Woodnesborough, Sandwich, Kent, CT13



### Directions

For directions to this property please contact us.





Call Deal Branch 01304 361420 ■ [wardsofkent.co.uk](http://wardsofkent.co.uk)



- Legal advice should be taken to verify fixtures/fittings, planning, alterations and/or lease details
- Appliances & services are untested, dimensions are approximate and floor plans are not to scale
- Through a Homewise Home For Life Plan people aged 60+ can secure this property for up to 59% less, by purchasing a Lifetime Lease.



10634788/20230821/BG/LB1