



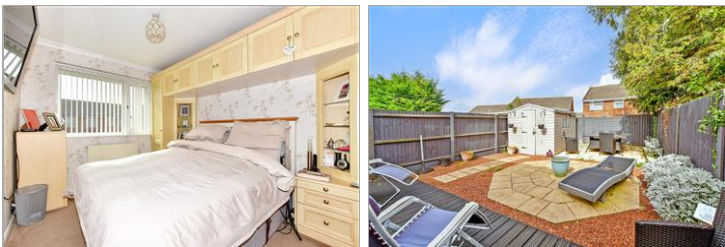
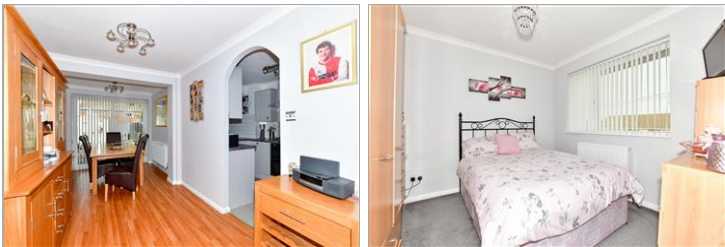
Price
£290,000

Freehold

3x  1x  2x 

**St. Francis Close, Deal,
Kent, CT14**

Wards
Helping you move forwards



Main features

- Quiet cul de sac location
- Allocated parking space and lots of on street parking
- Great condition throughout and ready to move into
- Many improvements within the last few years including new kitchen and bathroom
- Low maintenance rear garden

Accommodation

GROUND FLOOR

Entrance hallway

Dining Area : 20'5 x 8'1 (6.23m x 2.47m)

Kitchen: 17'0 x 7'5 (5.19m x 2.26m)

Lounge : 15'11 x 11'5 (4.85m x 3.48m)

FIRST FLOOR

Bathroom

Bedroom 2: 9'10 x 9'6 (3.00m x 2.90m)

Bedroom 1: 14'9 x 9'2 (4.50m x 2.80m)

Bedroom 3: 8'8 x 6'9 (2.64m x 2.06m)

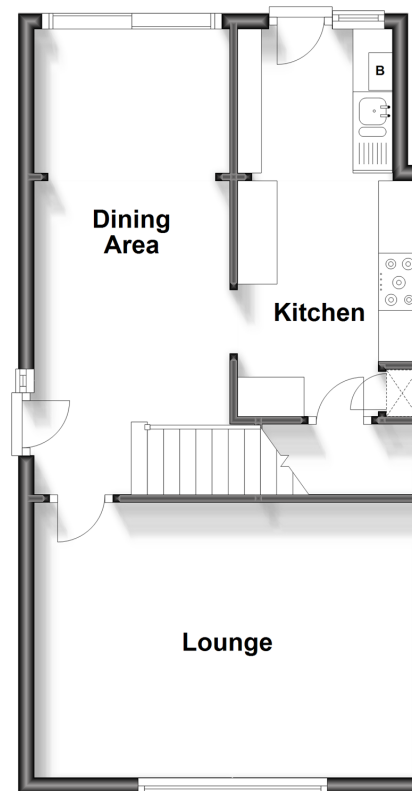
OUTSIDE

Allocated Parking

Front and Rear Gardens

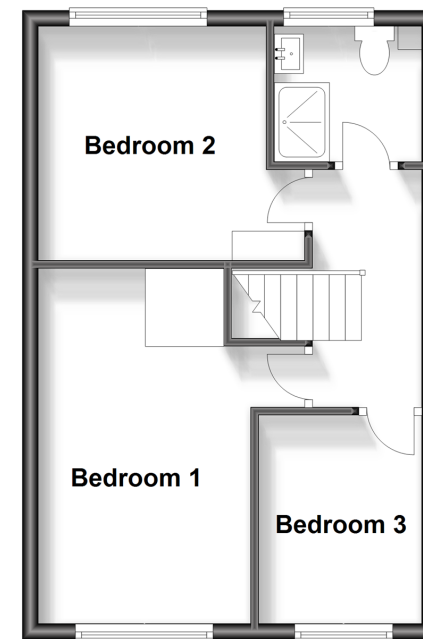
Ground Floor

Approx. 45.7 sq. metres (492.3 sq. feet)



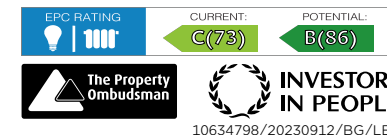
First Floor

Approx. 37.0 sq. metres (397.9 sq. feet)



Call Deal - 01304 361420 ■ wardsokent.co.uk

- Legal advice should be taken to verify fixtures/fittings, planning, alterations and/or lease details
- Appliances & services are untested, dimensions are approximate and floor plans are not to scale



10634798/20230912/BG/LB1