



Price
£435,000

Freehold

3x  2x  1x 

**Golf Road, Deal, Kent,
CT14**

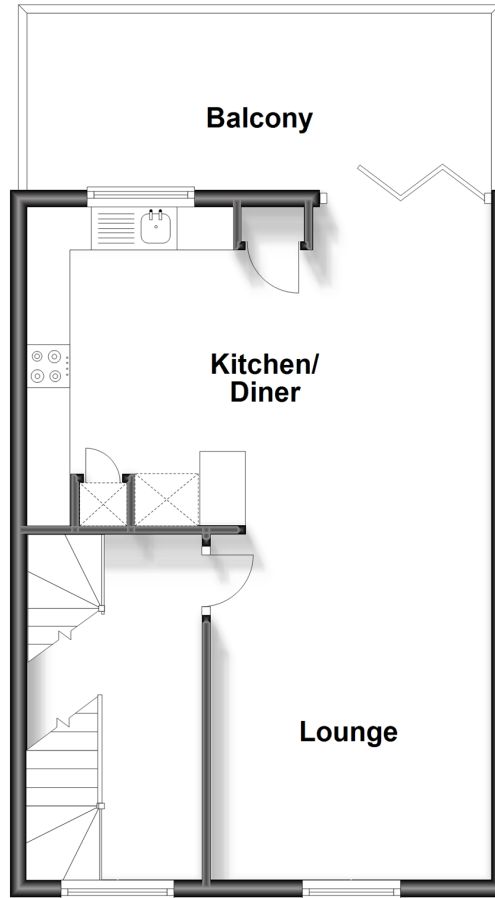
OVER 60?

Secure this property
for up to **59% less!**

Wards
Helping you move forwards

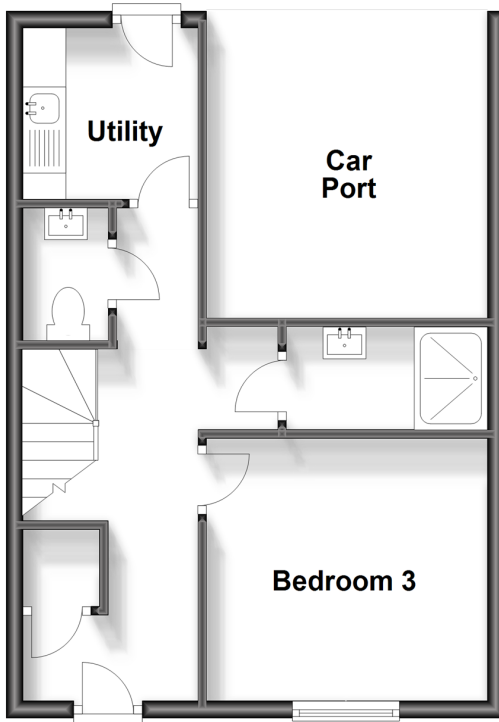
First Floor

Approx. 43.7 sq. metres (470.5 sq. feet)



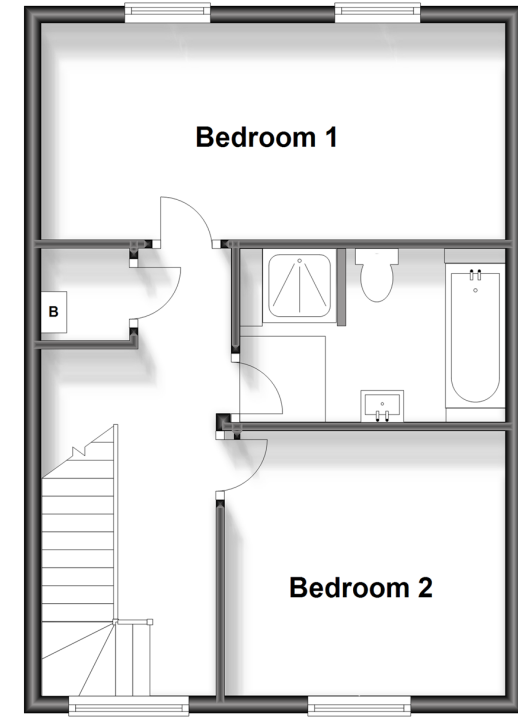
Split Level Ground Floor

Approx. 42.4 sq. metres (456.0 sq. feet)



Second Floor

Approx. 43.4 sq. metres (467.2 sq. feet)



Accommodation

GROUND FLOOR

Entrance Hallway

Bedroom 3: 10'9 x 10'3 (3.28m x 3.13m)

Shower room

Cloakroom

Utility Area : 6'7 x 6'6 (2.01m x 1.98m)

FIRST FLOOR

Landing

Lounge : 13'0 x 10'9 (3.97m x 3.28m)

Kitchen/Diner: 17'9 x 12'9 (5.41m x 3.89m)

Balcony

SECOND FLOOR

Landing

Bedroom 2: 10'9 x 10'1 (3.28m x 3.08m)

Bathroom

Bedroom 1: 17'8 x 8'9 (5.39m x 2.67m)

OUTSIDE

Front Garden

Car Port



Main features

- Immaculate town house within a short walk of the town centre
- Decked terrace off the open plan living accommodation
- Car port parking in secure gated complex
- Ideal holiday home, low maintenance and easy to lock up and leave
- Downstairs bedroom and shower room, perfect guest suite for visitors



Nearest Schools

Primary Schools: Sandown School 0.0 miles, Warden House Primary 1.2 miles, Deal Parochial C of E Primary 1.3 miles

Secondary Schools: Brewood Secondary School 0.8 miles,



Transport Information

Train Stations: Deal 0.6 miles, Walmer 2.9 miles, Martin Mill 5.8 miles



Address

Golf Road, Deal, Kent, CT14



Directions

For directions to this property please contact us.





Wards
Helping you move forwards

Call Deal Branch 01304 361420 ■ wardsofkent.co.uk



■ Legal advice should be taken to verify fixtures/fittings, planning, alterations and/or lease details ■ Appliances & services are untested, dimensions are approximate and floor plans are not to scale
■ Through a Homewise Home For Life Plan people aged 60+ can secure this property for up to 59% less, by purchasing a Lifetime Lease.



10634812/20231111/BG/LB1