



Price
£300,000

Freehold

3x  1x  1x 

**Church Path, Deal, Kent,
CT14**

Wards
Helping you move forwards



Main features

- Pretty victorian terraced house
- Low maintenance rear garden
- Lots of character features throughout the property
- Superb quiet location on footpath with no vehicular traffic
- An Ideal holiday home due to the proximity to the beach and Deal train station

Accommodation

GROUND FLOOR

Entrance Hallway

Lounge : 12'0 x 11'10 (3.66m x 3.61m)

Dining Room : 13'2 x 11'7 (4.02m x 3.53m)

Kitchen : 13'4 x 8'6 (4.07m x 2.59m)

FIRST FLOOR

Landing

Bedroom 3: 10'1 x 9'4 (3.08m x 2.85m)

Wet Room

Bedroom 2: 11'6 x 11'2 (3.51m x 3.41m)

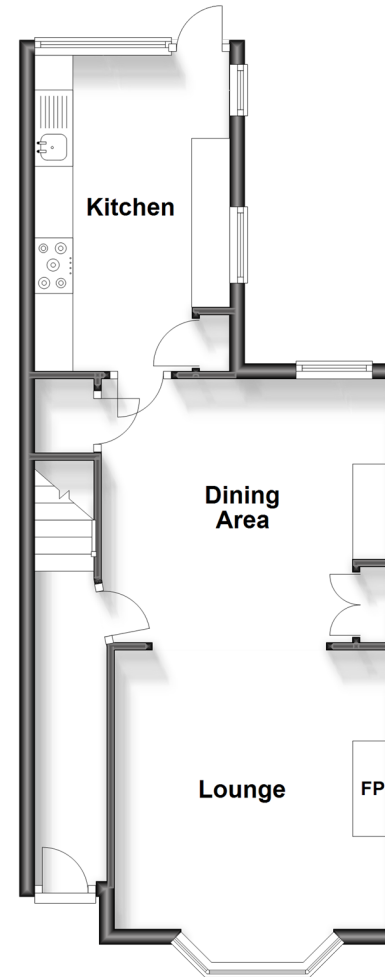
Bedroom 1: 15'1 x 12'3 (4.60m x 3.74m)

OUTSIDE

Front and Rear Garden

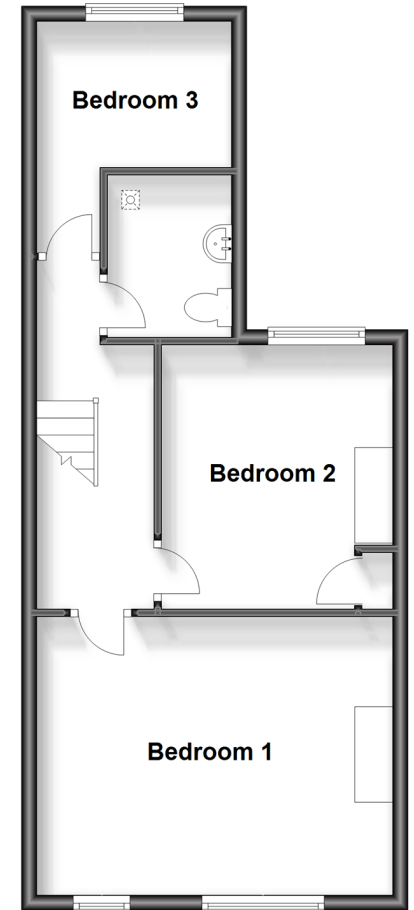
Ground Floor

Approx. 44.1 sq. metres (474.7 sq. feet)



First Floor

Approx. 44.5 sq. metres (479.0 sq. feet)



Call Deal - 01304 361420 ■ wardsokent.co.uk

- Legal advice should be taken to verify fixtures/fittings, planning, alterations and/or lease details
- Appliances & services are untested, dimensions are approximate and floor plans are not to scale



10634834/20231122/BH/LB1