



**Price**  
**£340,000**

**Freehold**

3x  1x  1x 

**Elliot Way, Sholden,  
Deal, Kent, CT14**

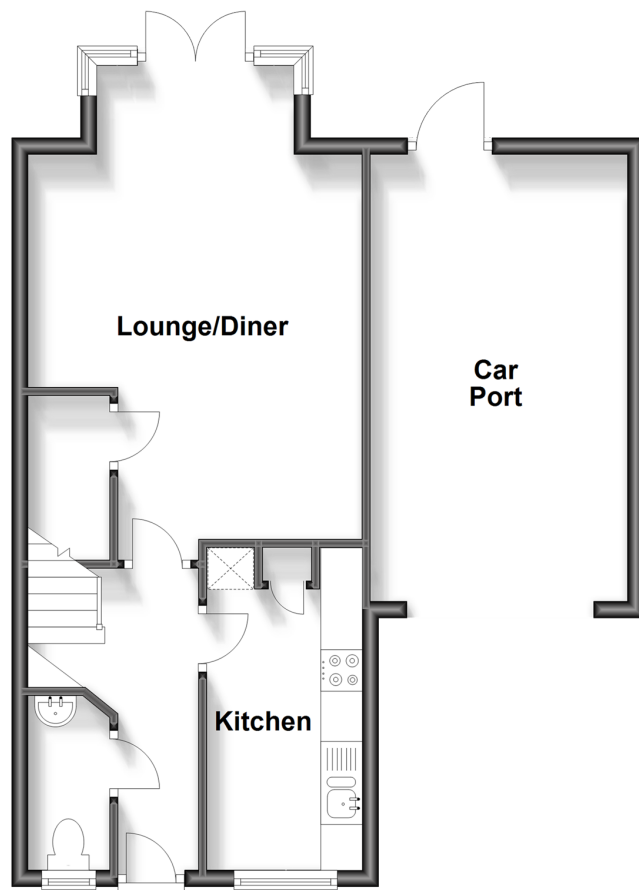
**OVER 60?**

Secure this property  
for up to **59% less!**

*Wards*  
Helping you move forwards

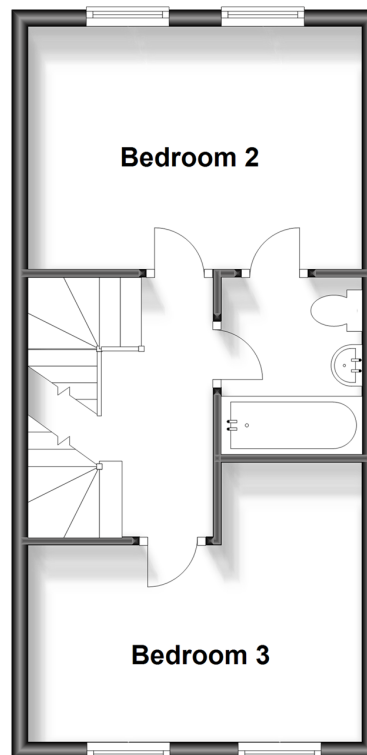
## Ground Floor

Approx. 54.5 sq. metres (587.0 sq. feet)



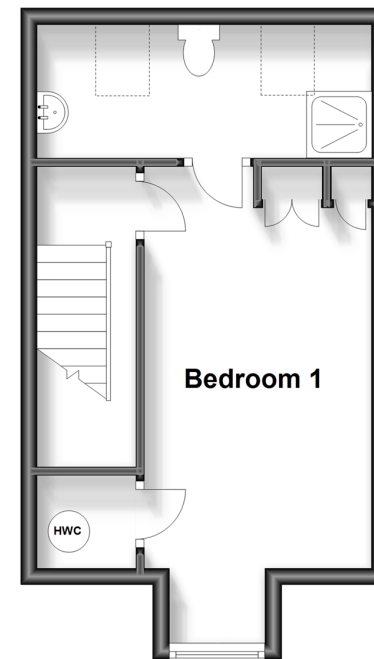
## First Floor

Approx. 34.8 sq. metres (374.2 sq. feet)



## Second Floor

Approx. 27.4 sq. metres (295.3 sq. feet)



## Accommodation

### GROUND FLOOR

Entrance Hallway  
Cloakroom  
Kitchen : 12'8 x 6'1 (3.86m x 1.86m)  
Lounge/Diner: 19'6 x 13'3 (5.95m x 4.04m)

### FIRST FLOOR

Landing  
Bedroom 2: 13'3 x 10'5 (4.04m x 3.18m)  
Jack and Jill Bathroom  
Bedroom 3: 13'4 x 11'0 (4.07m x 3.36m)

### SECOND FLOOR

Landing  
Bedroom 1: 19'3 x 9'8 (5.87m x 2.95m)  
En-suite Shower Room

### OUTSIDE

Front and Rear Gardens  
Car Port  
Off Road Parking





## Main features

- Driveway and car port
- Situated in a desirable spot within the development and features a sunny rear garden
- Jack and Jill bathroom
- Layout spread over three floors, with bedroom and en-suite on the top floor
- Within a short car journey of Deal town centre



## Nearest Schools

Primary Schools: Sholden C of E Primary 0.4 miles, Hornbeam Primary 0.7 miles, St Mary's Catholic Primary 1.4 miles

Secondary Schools: Goodwin Academy 1.5 miles,

## Transport Information

Train Stations: Deal 1.7 miles, Walmer 2.4 miles, Sandwich 4.1 miles

## Address

Elliot Way, Sholden, Deal, Kent, CT14

## Directions

For directions to this property please contact us.





**Wards**  
Helping you move forwards

Call Deal Branch 01304 361420 ■ [wardsofkent.co.uk](http://wardsofkent.co.uk)



■ Legal advice should be taken to verify fixtures/fittings, planning, alterations and/or lease details ■ Appliances & services are untested, dimensions are approximate and floor plans are not to scale  
■ Through a Homewise Home For Life Plan people aged 60+ can secure this property for up to 59% less, by purchasing a Lifetime Lease.



10634841/20231016/BG/WSM