



Price
£350,000

Freehold

3x  2x  1x 

**Wyse Close, Deal, Kent,
CT14**

Wards
Helping you move forwards



Main features

- Quiet cul-de-sac location
- En-suite to main bedroom
- Landscaped rear garden
- Large, spacious kitchen/diner and separate utility room
- Within walking distance of local primary schools and on a bus route

Accommodation

GROUND FLOOR

Entrance Hallway
 Lounge : 12'5 x 10'11 (3.79m x 3.33m)
 Cloakroom
 Kitchen/Diner: 18'1 x 9'4 (5.52m x 2.85m)
 Utility Room : 5'7 x 5'5 (1.70m x 1.65m)

FIRST FLOOR

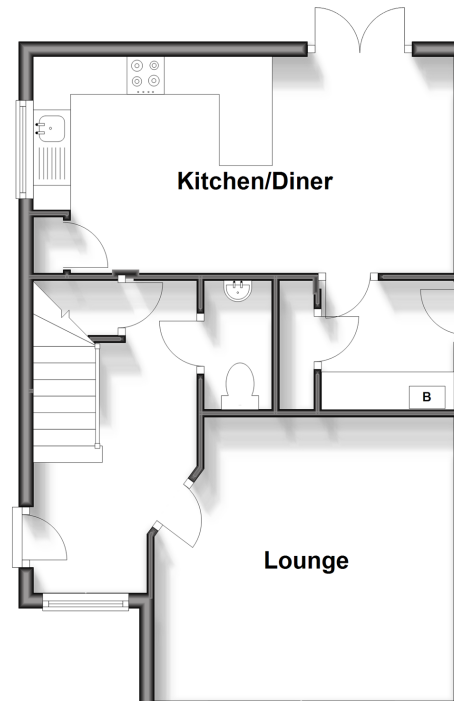
Landing
 Bedroom 3: 9'6 x 8'3 (2.90m x 2.52m)
 Bedroom 2: 9'7 x 9'5 (2.92m x 2.87m)
 Bathroom
 Bedroom 1: 12'11 x 10'11 (3.94m x 3.33m)
 En-suite

OUTSIDE

Front and Rear Garden
 Parking

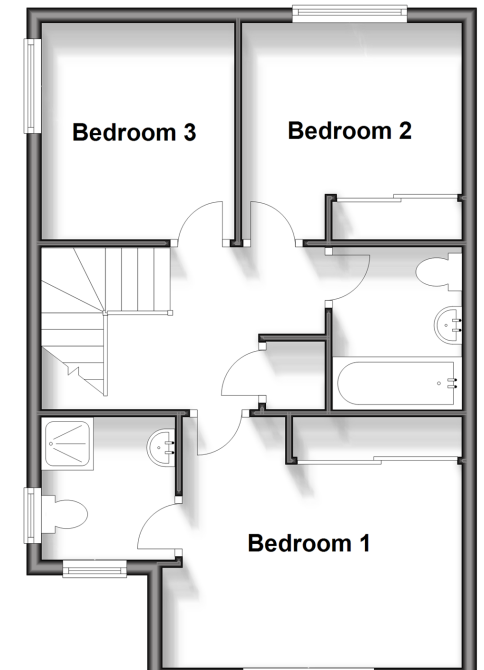
Ground Floor

Approx. 45.9 sq. metres (494.1 sq. feet)



First Floor

Approx. 45.9 sq. metres (494.1 sq. feet)



Call Deal - 01304 361420 ■ wardsofkent.co.uk

■ Legal advice should be taken to verify fixtures/fittings, planning, alterations and/or lease details

■ Appliances & services are untested, dimensions are approximate and floor plans are not to scale



10634858/20231116/BG/LB1