



**Price**

**£475,000**

**Freehold**

2x  1x  2x 

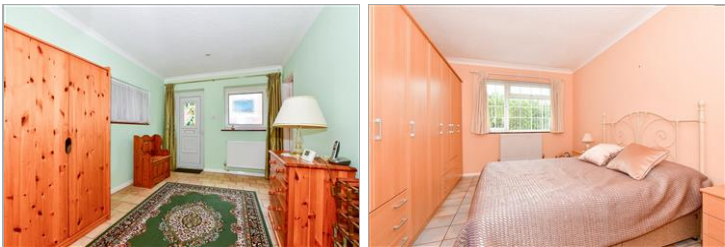
**Hillcrest Road,  
Kingsdown, Deal, Kent,  
CT14**

**OVER 60?**

Secure this property  
for up to **59% less!**

*Wards*  
Helping you move forwards





## Main features

- Far stretching sea views and of the golf course
- Large spacious bungalow with potential to reconfigure
- Excellent, highly sought after location
- Driveway parking for 2 cars which could be extended subject to planning permission.

## Accommodation

### SPLIT LEVEL GROUND FLOOR

Entrance Hall

Bedroom 2: 17'4 x 10'0 (5.29m x 3.05m)

Kitchen/Breakfast Room

Shower Room

Bedroom 1: 14'9 x 11'0 (4.50m x 3.36m)

En-suite Toilet

Lounge/Diner: 26'8 x 11'4 (8.13m x 3.46m)

Sun Room : 15'10 x 11'11 (4.83m x 3.63m)

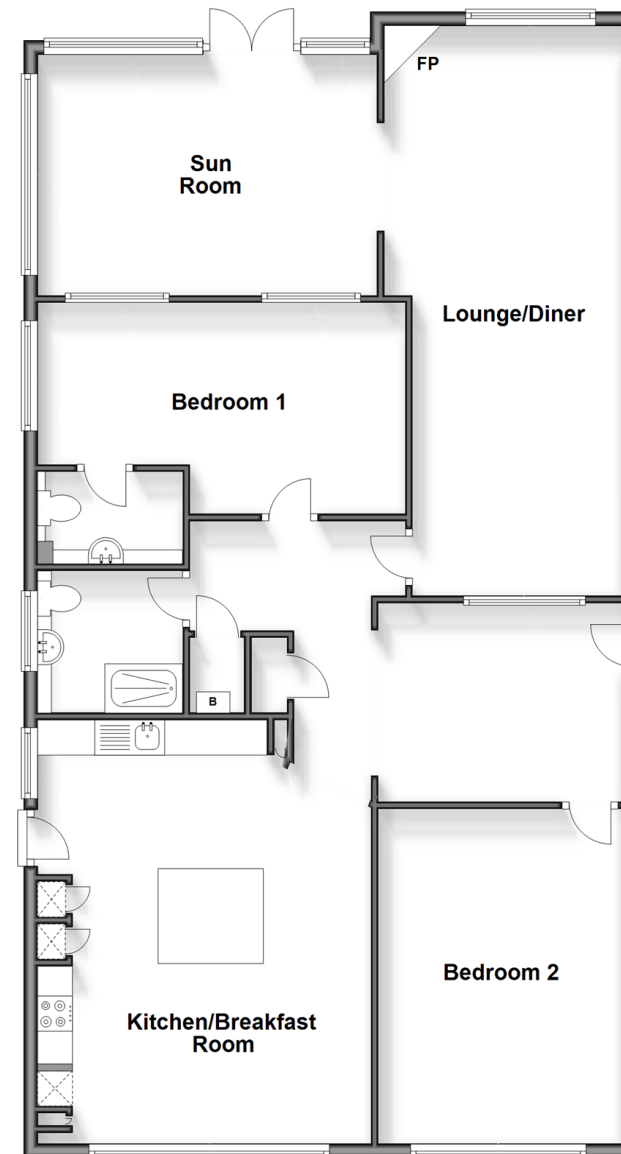
### OUTSIDE

Front and Rear Gardens

Driveway

### Split Level Ground Floor

Approx. 115.4 sq. metres (1242.2 sq. feet)



**Call Deal - 01304 361420 ■ [wardsof Kent.co.uk](http://wardsof Kent.co.uk)**

- The seller is a person connected with Wards as defined in the Estate Agents Act 1979
- Legal advice should be taken to verify fixtures/fittings, planning, alterations and/or lease details
- Appliances & services are untested, dimensions are approximate and floor plans are not to scale
- Through a Homewise Home For Life Plan people aged 60+ can secure this property for up to 59% less, by purchasing a Lifetime Lease.