



OVER 60?

Secure this property
for up to **59% less!**

Price

£310,000

Freehold

3x  1x  1x 

**St. Richard's Road, Deal,
Kent, CT14**

Wards
Helping you move forwards



Main features

- In good condition throughout and ready to move into
- Spacious low maintenance rear garden
- Benefits from side access and green space to the rear
- Hard standing to front with potential to create driveway (subject to relevant permissions)
- Convenient location with schools, transport links and shops nearby

Accommodation

GROUND FLOOR

Lounge : 14'5 x 9'0 (4.40m x 2.75m)
Dining Area : 10'1 x 9'10 (3.08m x 3.00m)
Kitchen : 6'8 x 6'6 (2.03m x 1.98m)

FIRST FLOOR

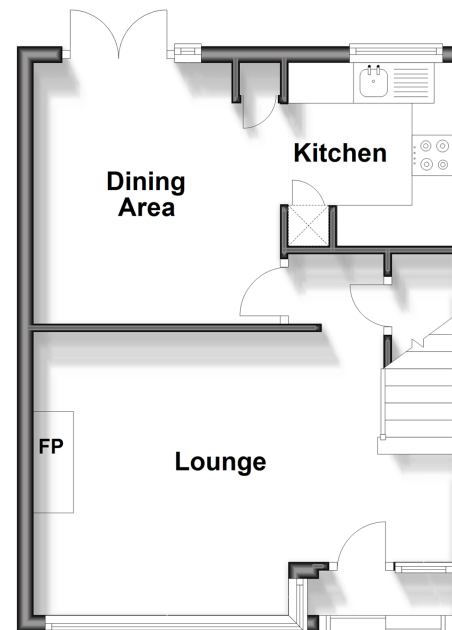
Landing
Bedroom 2: 10'10 x 9'11 (3.30m x 3.02m)
Bedroom 3: 6'9 x 6'4 (2.06m x 1.93m)
Bedroom 1: 10'10 x 9'11 (3.30m x 3.02m)

OUTSIDE

Rear Garden

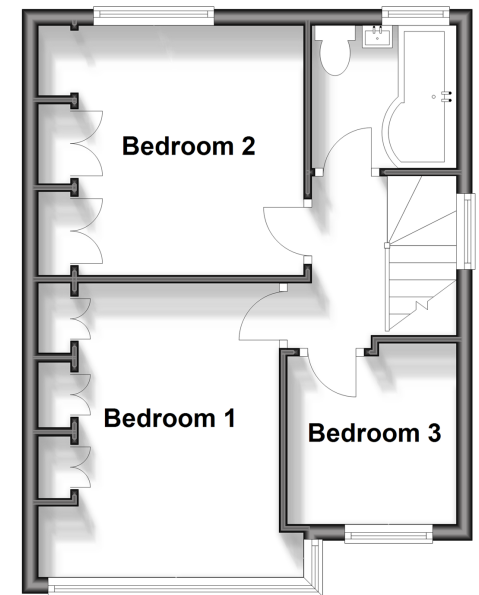
Ground Floor

Approx. 35.2 sq. metres (378.9 sq. feet)



First Floor

Approx. 34.2 sq. metres (368.2 sq. feet)



Call Deal - 01304 361420 ■ wardsofkent.co.uk

- Legal advice should be taken to verify fixtures/fittings, planning, alterations and/or lease details
- Through a Homewise Home For Life Plan people aged 60+ can secure this property for up to 59% less, by purchasing a Lifetime Lease.

- Appliances & services are untested, dimensions are approximate and floor plans are not to scale



10634867/20240430/WSM/WSM