



**OVER 60?**

Secure this property  
for up to **59% less!**

**Price**

**£350,000**

**Freehold**

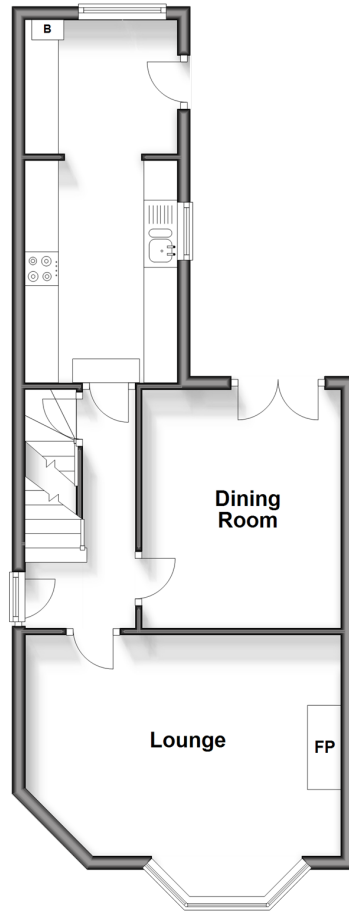
3x  1x  2x 

**Station Road, Walmer,  
Deal, Kent, CT14**

*Wards*  
Helping you move forwards

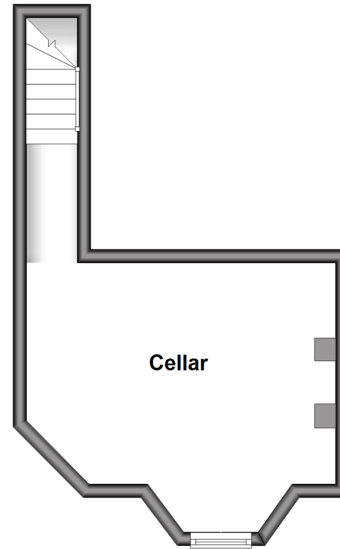
### Split Level Ground Floor

Approx. 45.1 sq. metres (485.9 sq. feet)



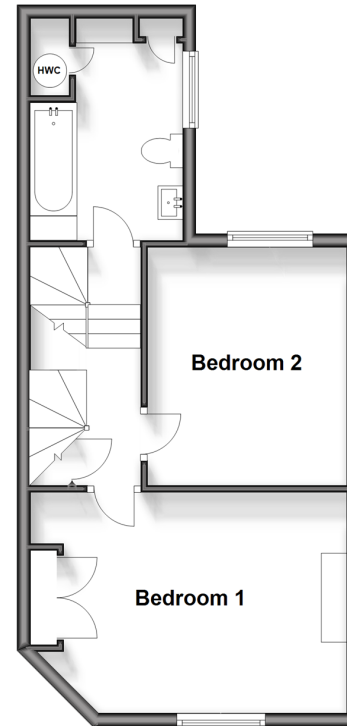
### Basement

Approx. 18.7 sq. metres (201.3 sq. feet)



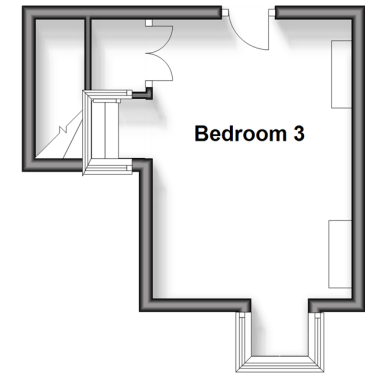
### Split Level First Floor

Approx. 40.0 sq. metres (430.9 sq. feet)



### Second Floor

Approx. 16.7 sq. metres (179.9 sq. feet)



## Accommodation

### SPLIT LEVEL GROUND FLOOR

Entrance Hallway

Lounge : 15'2 x 13'8 (4.63m x 4.17m)

Dining Room : 11'1 x 9'8 (3.38m x 2.95m)

Kitchen : 18'4 x 7'11 (5.59m x 2.41m)

### BASEMENT

CELLAR: 15'3 x 13'1 (4.65m x 3.99m)

### SPLIT LEVEL FIRST FLOOR

Landing

Bedroom 1: 11'4 x 9'9 (3.46m x 2.97m)

Bedroom 2: 13'6 x 10'8 (4.12m x 3.25m)

Bathroom

### SECOND FLOOR

Landing

Bedroom 3: 13'6 x 10'8 (4.12m x 3.25m)

### OUTSIDE

Rear Garden





## Main features

- All double bedrooms
- Period features throughout and open fire in the lounge
- Only minutes from Walmer train station
- Cellar used as storage but could be updated and make a great office or games room
- Pretty rear garden with large shed and side access



### Nearest Schools

Primary Schools: The Downs C of E Primary 0.5 miles, St Mary's Catholic Primary 0.7 miles, Deal Parochial C of E Primary 0.9 miles

Secondary Schools: Goodwin Academy 0.3 miles,



### Transport Information

Train Stations: Walmer 0.0 miles, Deal 1.6 miles, Martin Mill 2.6 miles



### Address

Station Road, Walmer, Deal, Kent, CT14



### Directions

For directions to this property please contact us.





*Wards*  
Helping you move forwards

Call Deal Branch 01304 361420 ■ [wardsofkent.co.uk](http://wardsofkent.co.uk)



■ Legal advice should be taken to verify fixtures/fittings, planning, alterations and/or lease details ■ Appliances & services are untested, dimensions are approximate and floor plans are not to scale  
■ Through a Homewise Home For Life Plan people aged 60+ can secure this property for up to 59% less, by purchasing a Lifetime Lease.



10634891/20231127/BG/LB1