



Price
£425,000

Freehold

3x  2x  2x 

**Mill Road, Deal, Kent,
CT14**

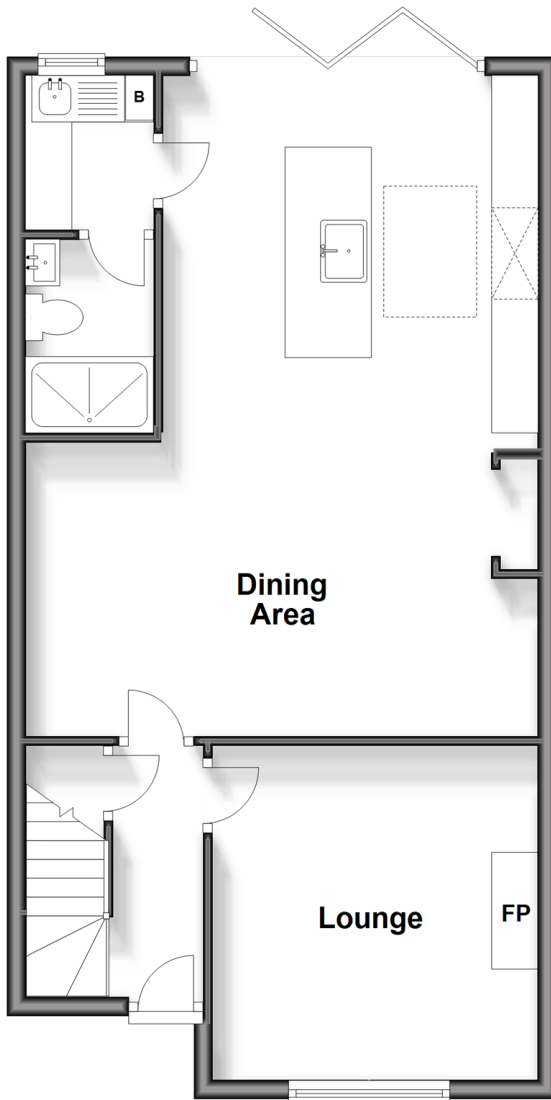
OVER 60?

Secure this property
for up to **59% less!**

Wards
Helping you move forwards

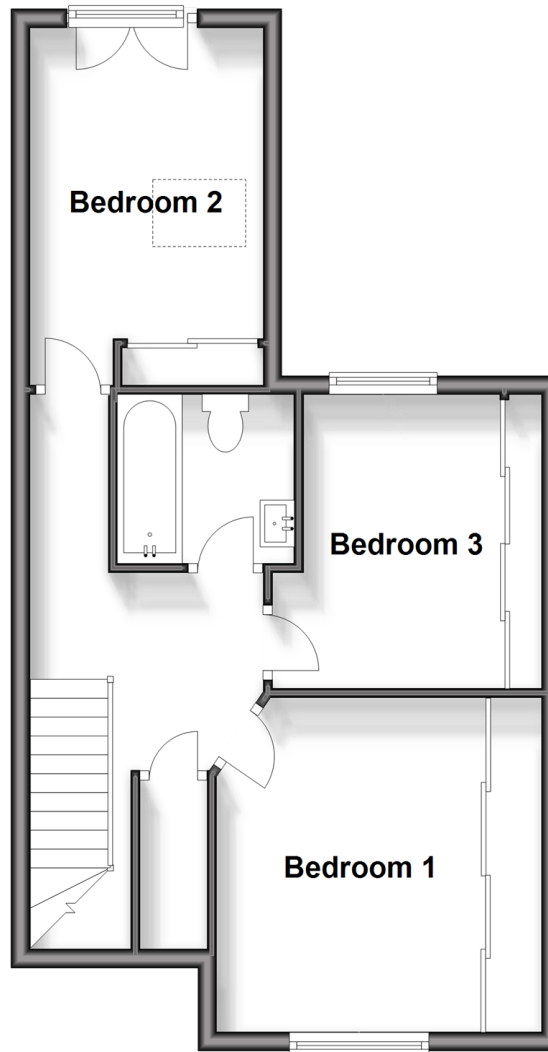
Ground Floor

Approx. 57.7 sq. metres (620.6 sq. feet)



First Floor

Approx. 45.8 sq. metres (493.4 sq. feet)



Accommodation

GROUND FLOOR

Entrance Hallway

Lounge : 11'9 x 11'6 (3.58m x 3.51m)

Dining Area/Kitchen : 22'10 x 18'0 (6.96m x 5.49m)

Utility : 5'2 x 4'4 (1.58m x 1.32m)

Shower Room

FIRST FLOOR

Landing

Bedroom 1: 12'4 x 8'6 (3.76m x 2.59m)

Bedroom 3: 9'6 x 6'11 (2.90m x 2.11m)

Bathroom

Bedroom 2: 11'6 x 9'9 (3.51m x 2.97m)

OUTSIDE

Front and Rear Gardens



Main features

- Fully renovated stunning home
- Great views overlooking recreation field
- Walking distance to town, beach and train station
- Completed with the highest quality fixtures and immaculate finish throughout
- Open plan kitchen/diner with bi-fold doors opening out onto a substantial garden



Nearest Schools

Primary Schools: Deal Parochial C of E Primary 0.7 miles, Warden House Primary 0.7 miles, St Mary's Catholic Primary 0.8 miles

Secondary Schools: Goodwin Academy 0.2 miles,



Transport Information

Train Stations: Deal 0.8 miles, Walmer 1.6 miles, Martin Mill 4.9 miles



Address

Mill Road, Deal, Kent, CT14



Directions

For directions to this property please contact us.



Call Deal Branch 01304 361420 ■ wardsofkent.co.uk



- If buying to let, the energy rating will need to be improved to at least 'E' rating before you can let the property
- Appliances & services are untested, dimensions are approximate and floor plans are not to scale

- Legal advice should be taken to verify fixtures/fittings, planning, alterations and/or lease details
- Through a Homewise Home For Life Plan people aged 60+ can secure this property for up to 59% less, by purchasing a Lifetime Lease.



10634956/20240222/BH/LB1