



**Price**  
**£580,000**

**Freehold**

3x  1x  2x 

**Upper Street,  
Kingsdown, Deal, Kent,  
CT14**

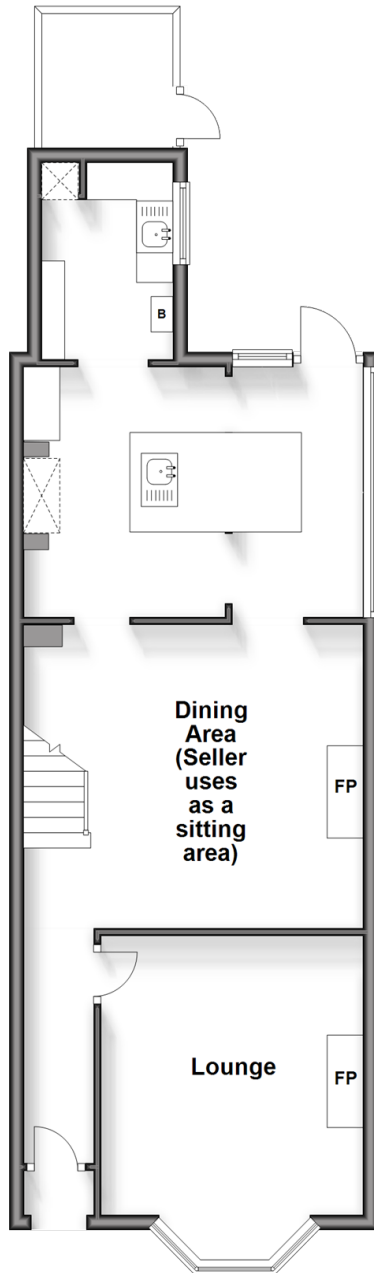
**OVER 60?**

Secure this property  
for up to **59% less!**

*Wards*  
Helping you move forwards

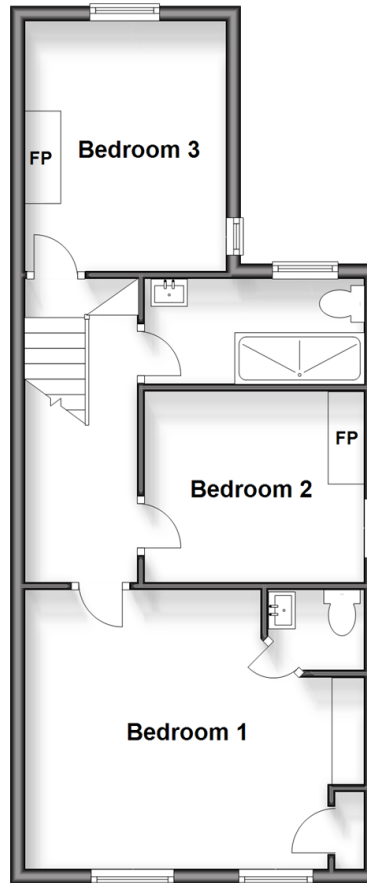
### Split Level Ground Floor

Approx. 58.3 sq. metres (627.4 sq. feet)



### Split Level First Floor

Approx. 47.1 sq. metres (507.1 sq. feet)



## Accommodation

### GROUND FLOOR

Lounge : 12'2 x 11'0 (3.71m x 3.36m)

Sitting Area: 14'8 x 13'5 (4.47m x 4.09m)

Kitchen/Diner : 15'5 x 11'3 (4.70m x 3.43m)

Utility Area : 8'8 x 5'8 (2.64m x 1.73m)

### FIRST FLOOR

Landing

Bedroom 3: 9'5 x 8'5 (2.87m x 2.57m)

Shower Room

Bedroom 2: 11'1 x 9'1 (3.38m x 2.77m)

Bedroom 1: 13'5 x 12'2 (4.09m x 3.71m)

En-suite Toilet

### OUTSIDE

Garden Office/Gym: 14'3 x 7'9 (4.35m x 2.36m)

Front and Rear Garden





## Main features

- In stunning condition throughout with character features
- Garden office/gym with full power and internet supply
- Strikingly landscaped rear garden with private side access
- Situated in the heart of the village with local butcher, convenience store, post office, and village pub in walking distance



### Nearest Schools

Primary Schools: Kingsdown and Ringwould CofE Primary 0.2 miles, The Downs C of E Primary 1.6 miles, Deal Parochial C of E Primary 1.9 miles

Secondary Schools: Learning Opportunities Centre



### Transport Information

Train Stations: Walmer 1.4 miles, Martin Mill 2.3 miles, Deal 2.6 miles



### Address

Upper Street, Kingsdown, Deal, Kent, CT14



### Directions

For directions to this property please contact us.







**Wards**  
Helping you move forwards

Call Deal Branch 01304 361420 ■ [wardsofkent.co.uk](http://wardsofkent.co.uk)



■ Legal advice should be taken to verify fixtures/fittings, planning, alterations and/or lease details ■ Appliances & services are untested, dimensions are approximate and floor plans are not to scale  
■ Through a Homewise Home For Life Plan people aged 60+ can secure this property for up to 59% less, by purchasing a Lifetime Lease.



10634986/20240320/WSM/WSM