



OVER 60?

Secure this property
for up to **59% less!**

Price
£270,000

Freehold

3x  1x  1x 

**London Road, Deal,
Kent, CT14**

Wards
Helping you move forwards



Main features

- In need of some modernisation
- Side access and low maintenance rear garden
- Open plan kitchen/dining area with separate lounge
- Situated within a short walk of the High Street and train station
- Recently fitted combi- boiler

Accommodation

GROUND FLOOR

Entrance Hallway

Lounge : 14'2 x 10'11 (4.32m x 3.33m)

Kitchen : 7'6 x 5'9 (2.29m x 1.75m)

Dining Area : 11'0 x 10'7 (3.36m x 3.23m)

Rear Porch

FIRST FLOOR

Landing

Bathroom

Bedroom 2: 11'0 x 10'0 (3.36m x 3.05m)

Bedroom 1: 14'2 x 10'0 (4.32m x 3.05m)

Bedroom 3: 11'2 x 6'6 (3.41m x 1.98m)

OUTSIDE

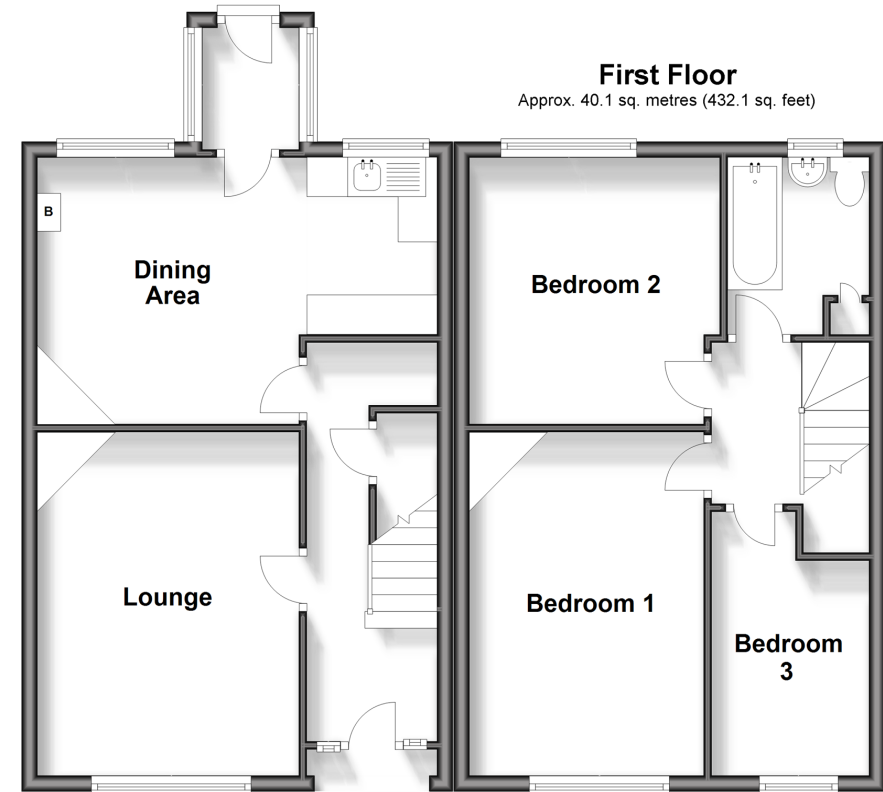
Front and Rear Gardens

Ground Floor

Approx. 41.4 sq. metres (445.9 sq. feet)

First Floor

Approx. 40.1 sq. metres (432.1 sq. feet)



Call Deal - 01304 361420 ■ wardsofkent.co.uk

- Legal advice should be taken to verify fixtures/fittings, planning, alterations and/or lease details
- Appliances & services are untested, dimensions are approximate and floor plans are not to scale
- Through a Homewise Home For Life Plan people aged 60+ can secure this property for up to 59% less, by purchasing a Lifetime Lease.



10634991/20240408/PV/WSM