



Price

£200,000

Freehold

2x  2x  1x 

**Greenacres Park, Golf
Road, Deal, Kent, CT14**

Wards
Helping you move forwards



Main features

- Detached park home for over 50's
- Situated in a peaceful location with far reaching views
- Driveway Parking
- Spacious accommodation, large lounge diner and en-suite shower room to main bedroom
- Bus service provided by council into Deal twice a week

Accommodation

GROUND FLOOR

Entrance Hallway

Lounge/Diner: 19'6 x 17'11 (5.95m x 5.46m)

Kitchen : 17'7 x 9'8 (5.36m x 2.95m)

Office : 7'5 x 3'6 (2.26m x 1.07m)

Bedroom 2: 10'8 x 10'2 (3.25m x 3.10m)

Bedroom 1: 11'1 x 10'1 (3.38m x 3.08m)

En-suite

Bathroom

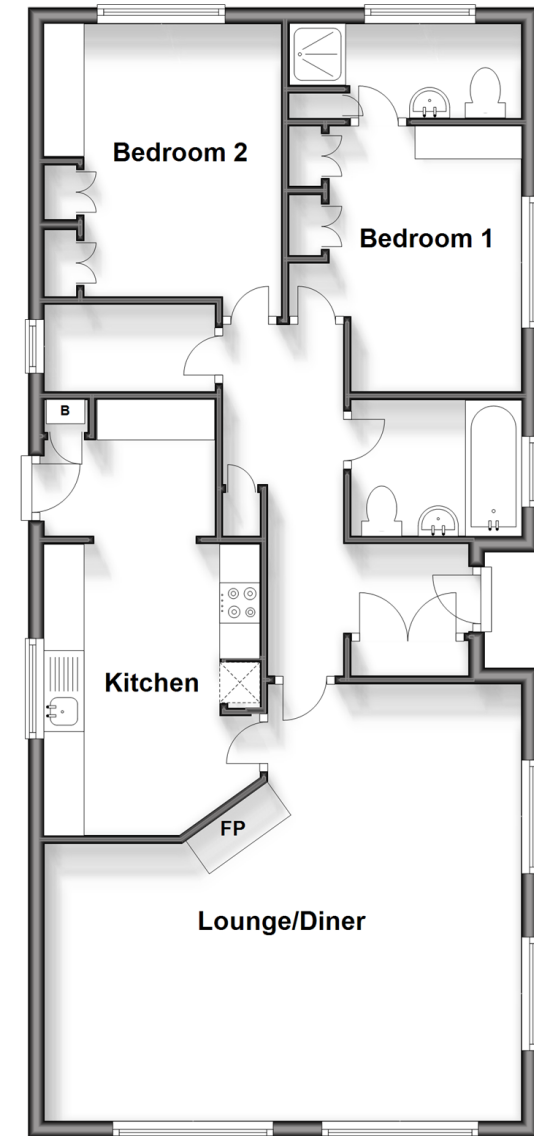
OUTSIDE

Front and Rear Garden

Driveway

Ground Floor

Approx. 79.6 sq. metres (856.8 sq. feet)



Call Deal - 01304 361420 ■ wardsofkent.co.uk

- If buying to let, the energy rating will need to be improved to at least 'E' rating before you can let the property
- Legal advice should be taken to verify fixtures/fittings, planning, alterations and/or lease details
- Appliances & services are untested, dimensions are approximate and floor plans are not to scale



10634992/20240321/BG/LB1