



OVER 60?

Secure this property
for up to **59% less!**

Price
£575,000

Freehold

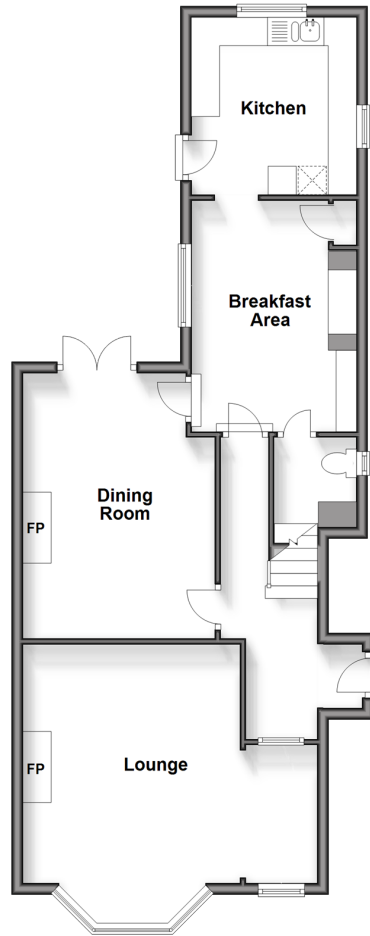
4x  2x  3x 

**Dover Road, Walmer,
Deal, Kent, CT14**

Wards
Helping you move forwards

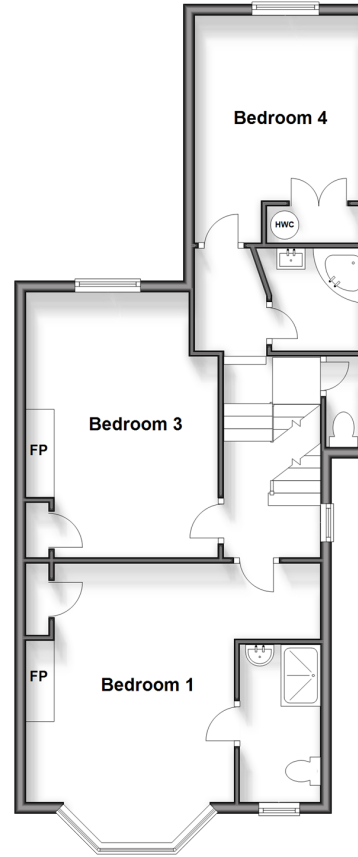
Split Level Ground Floor

Approx. 68.4 sq. metres (736.2 sq. feet)



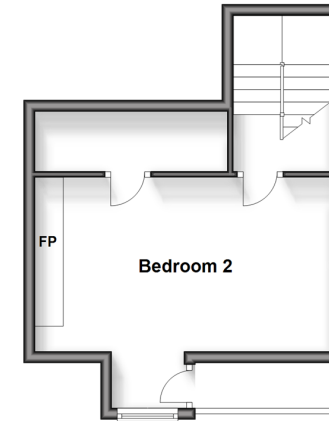
Split Level First Floor

Approx. 63.5 sq. metres (683.0 sq. feet)



Second Floor

Approx. 26.2 sq. metres (282.1 sq. feet)



Accommodation

GROUND FLOOR

Entrance Hall

Lounge: 16'1 x 15'1 (4.91m x 4.60m)

Dining Area: 15'0 x 11'0 (4.58m x 3.36m)

Snug: 12'1 x 9'1 (3.69m x 2.77m)

Cloakroom

Kitchen: 10'0 x 9'1 (3.05m x 2.77m)

Bedroom 3: 15'0 x 9'1 (4.58m x 2.77m)

Bedroom 4: 13'0 x 9'0 (3.97m x 2.75m)

Bathroom

Toilet

SECOND FLOOR

Landing

Bedroom 2: 17'0 x 10'0 (5.19m x 3.05m)

FIRST FLOOR

Landing

Bedroom 1: 16'1 x 15'1 (4.91m x 4.60m)

En-suite Shower Room

OUTSIDE

Off-Road Parking

Front & Rear Gardens

Garage



Main features

- Stunning views over Archery Square to the sea
- Garage and parking for 2 vehicles to the rear
- Superb location only a short walk to the beach and shops
- Many period features including high ceilings, fireplaces, picture rails, fitted cupboards and architrave
- Large sunny aspect rear garden with pergola, greenhouse and shed



Nearest Schools

Primary Schools: Deal Parochial C of E Primary 0.2 miles, The Downs C of E Primary 0.3 miles, St Mary's Catholic Primary 0.9 miles

Secondary Schools: Goodwin Academy 0.5 miles,



Transport Information

Train Stations: Walmer 0.8 miles, Deal 0.9 miles, Martin Mill 3.4 miles



Address

Dover Road, Walmer, Deal, Kent, CT14



Directions

For directions to this property please contact us.





Call Deal Branch 01304 361420 ■ wardsofkent.co.uk



■ Legal advice should be taken to verify fixtures/fittings, planning, alterations and/or lease details ■ Appliances & services are untested, dimensions are approximate and floor plans are not to scale
■ Through a Homewise Home For Life Plan people aged 60+ can secure this property for up to 59% less, by purchasing a Lifetime Lease.



10634994/20240426/BH/LB1