



**OVER 60?**

Secure this property  
for up to **59% less!**

**Price**  
**£425,000**

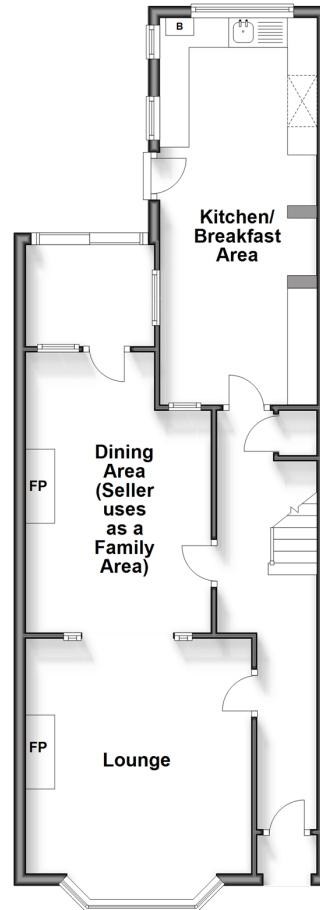
**Freehold**

3x  1x  2x 

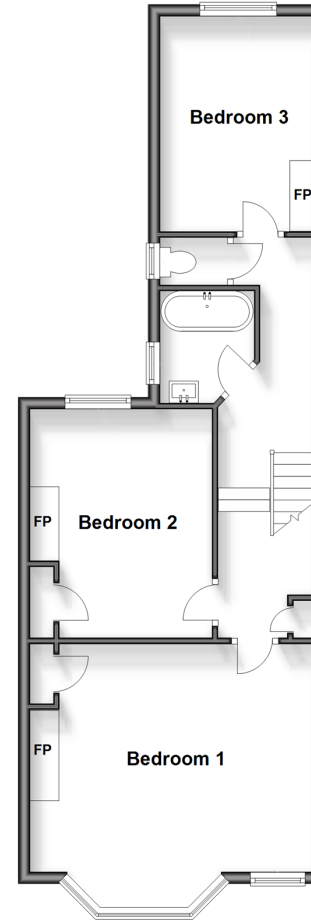
**Middle Deal Road, Deal,  
Kent, CT14**

*Wards*  
Helping you move forwards

**Ground Floor**  
Approx. 62.8 sq. metres (675.7 sq. feet)



**Split Level First Floor**  
Approx. 56.7 sq. metres (610.1 sq. feet)



## Accommodation

### GROUND FLOOR

Entrance Hallway  
Lounge: 12'9 x 12'7 (3.89m x 3.84m)  
Dining Area : 16'2 x 10'2 (4.93m x 3.10m)  
Conservatory : 6'4 x 6'4 (1.93m x 1.93m)  
Kitchen/Breakfast Area : 22'2 x 8'11 (6.76m x 2.72m)

### FIRST FLOOR

Landing  
Bedroom 3: 11'7 x 9'0 (3.53m x 2.75m)  
Seperate toilet  
Bathroom  
Bedroom 2: 13'0 x 10'6 (3.97m x 3.20m)  
Bedroom 1: 16'3 x 16'2 (4.96m x 4.93m)

### OUTSIDE

Front and Rear Gardens



## Main features

- Stunning, fully renovated period house
- Popular location, a short walk from town and beach
- Large main bedroom with feature fireplace
- Updates include full electrical rewire, new boiler, pipe work and new windows to the front the property



### Nearest Schools

Primary Schools: Warden House Primary 0.3 miles, Sholden C of E Primary 0.6 miles, Deal Parochial C of E Primary 0.6 miles

Secondary Schools: Brewood Secondary School 0.1 miles,



### Transport Information

Train Stations: Deal 0.4 miles, Walmer 1.2 miles, Martin Mill 3.9 miles



### Address

Middle Deal Road, Deal, Kent, CT14



### Directions

For directions to this property please contact us.



**Wards**  
Helping you move forwards

Call Deal Branch 01304 361420 ■ [wardsofkent.co.uk](http://wardsofkent.co.uk)



■ Legal advice should be taken to verify fixtures/fittings, planning, alterations and/or lease details ■ Appliances & services are untested, dimensions are approximate and floor plans are not to scale  
■ Through a Homewise Home For Life Plan people aged 60+ can secure this property for up to 59% less, by purchasing a Lifetime Lease.



10635004/20240509/WSM/LB1