



Price
£230,000

Freehold

2x  1x  1x 

**Roman Close, Deal,
Kent, CT14**

OVER 60?

Secure this property
for up to **59% less!**

Wards
Helping you move forwards



Main features

- Allocated residents parking space
- In good condition, ready to move into
- Ideal first time buy or investment
- Back to back style property with front garden
- Tucked away in a quiet close within a short drive of Deal centre

Accommodation

GROUND FLOOR

Porch

Lounge/Kitchen : 20'1 x 12'6 (6.13m x 3.81m)

FIRST FLOOR

Landing

Bedroom 1: 10'8 x 9'0 (3.25m x 2.75m)

Bedroom 2: 9'2 x 6'0 (2.80m x 1.83m)

Bathroom

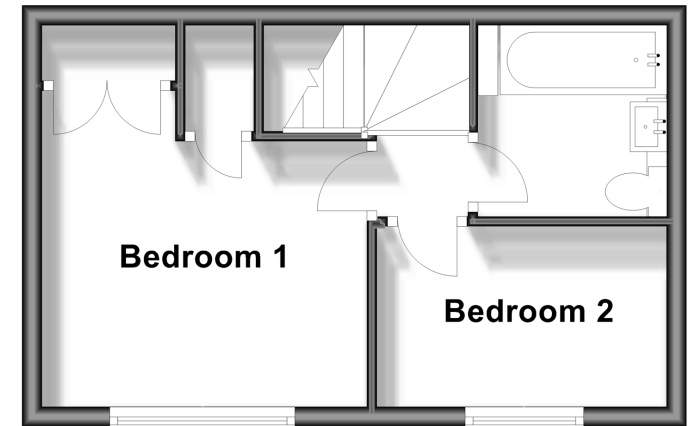
OUTSIDE

Front Garden

Allocated Parking

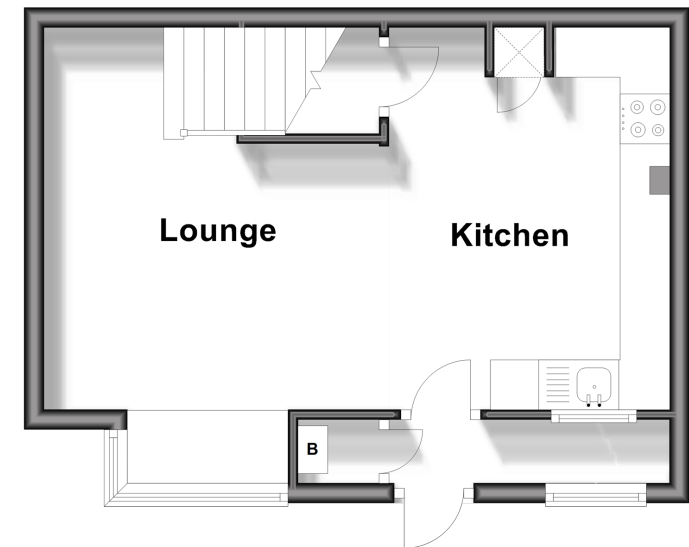
First Floor

Approx. 24.2 sq. metres (260.3 sq. feet)



Ground Floor

Approx. 28.2 sq. metres (303.7 sq. feet)



Call Deal - 01304 361420 ■ wardsokent.co.uk

- Legal advice should be taken to verify fixtures/fittings, planning, alterations and/or lease details
- Appliances & services are untested, dimensions are approximate and floor plans are not to scale
- Through a Homewise Home For Life Plan people aged 60+ can secure this property for up to 59% less, by purchasing a Lifetime Lease.



10635007/20240326/BG/WSM