



**Price**  
**£565,000**

**Freehold**

4x  1x  2x 

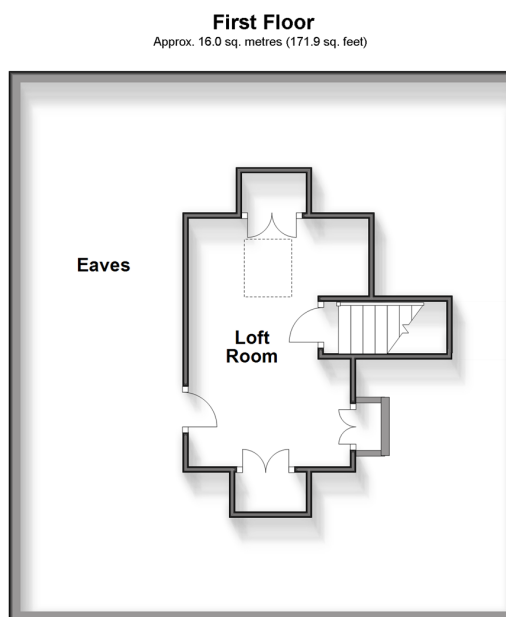
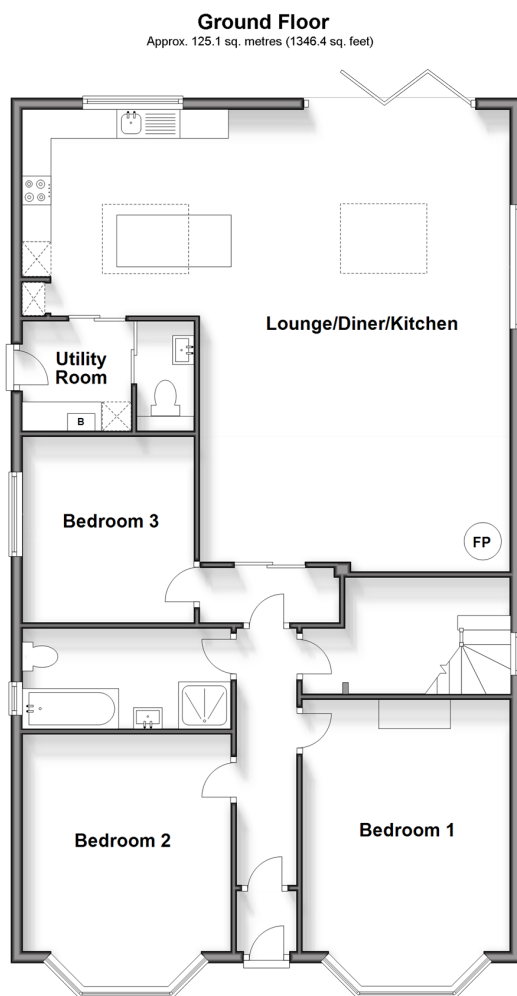
**Northbourne Road,  
Great Mongeham, Deal,  
Kent, CT14**

**OVER 60?**

Secure this property  
for up to **59% less!**

*Wards*  
Helping you move forwards





## Accommodation

### GROUND FLOOR

### Entrance Hallway

Bedroom 2: 12'6 x 11'11 (3.81m x 3.63m)  
 Bedroom 1: 14'6 x 12'0 (4.42m x 3.66m)  
 Bathroom  
 Snug Area : 9'4 x 6'7 (2.85m x 2.01m)  
 Bedroom 3: 10'7 x 10'0 (3.23m x 3.05m)  
 Lounge/Diner/Kitchen : 27'11 x 27'0 (8.51m x 8.24m)  
 Utility : 6'5 x 6'4 (1.96m x 1.93m)  
 Cloakroom

### FIRST FLOOR



## Main features

- New bathroom with bath and separate shower
- New windows throughout
- Driveway parking for several cars
- Large rear extension, creating a superb kitchen, dining and living space with bi-fold doors out to the impressive garden
- Peaceful village location, surrounded by open countryside and sea views, a short drive to Deal town and beach



### Nearest Schools

Primary Schools: Hornbeam Primary 1.0 miles, St Mary's Catholic Primary 1.2 miles, Sholden C of E Primary 1.3 miles

Secondary Schools: Ripplevale School 2.0 miles, Brewood



### Transport Information

Train Stations: Walmer 2.0 miles, Deal 2.3 miles, Martin Mill 4.6 miles



### Address

Northbourne Road, Great Mongeham, Deal, Kent, CT14



### Directions

For directions to this property please contact us.





**Wards**  
Helping you move forwards

Call Deal Branch 01304 361420 ■ [wardsofkent.co.uk](http://wardsofkent.co.uk)



■ Legal advice should be taken to verify fixtures/fittings, planning, alterations and/or lease details ■ Appliances & services are untested, dimensions are approximate and floor plans are not to scale  
■ Through a Homewise Home For Life Plan people aged 60+ can secure this property for up to 59% less, by purchasing a Lifetime Lease.



10635008/20240504/BH/LB1