



OVER 60?

Secure this property
for up to **59% less!**

Price

£600,000

Freehold

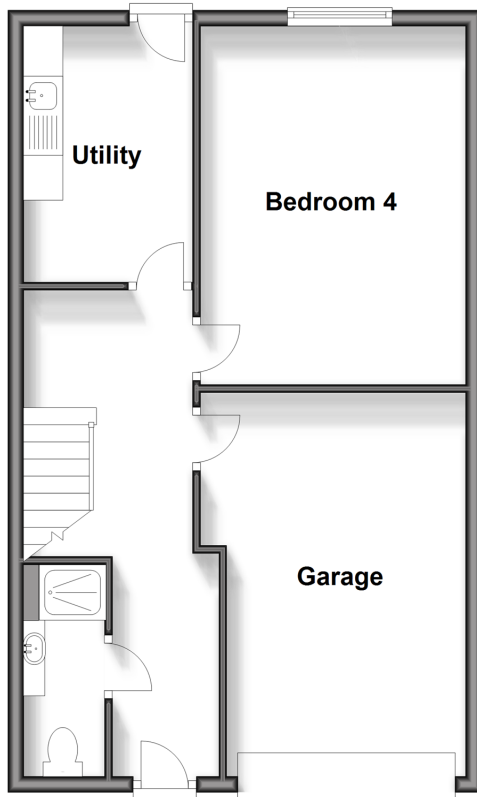
4x  3x  1x 

**Cavalry Court, Walmer,
Deal, Kent, CT14**

Wards
Helping you move forwards

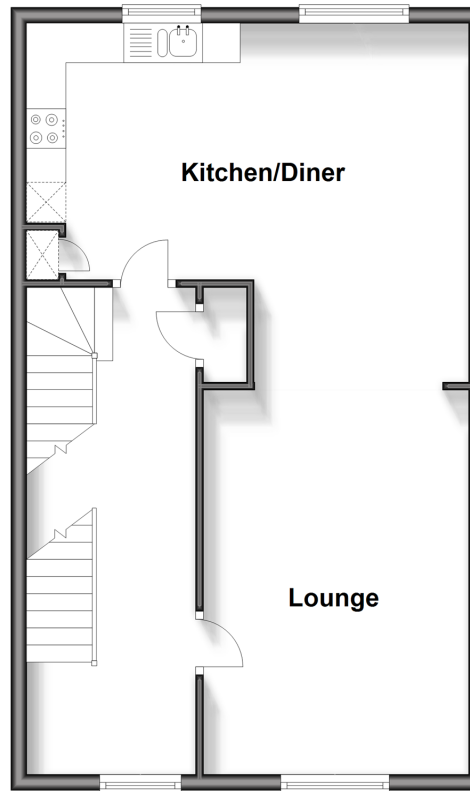
Ground Floor

Approx. 53.2 sq. metres (572.6 sq. feet)



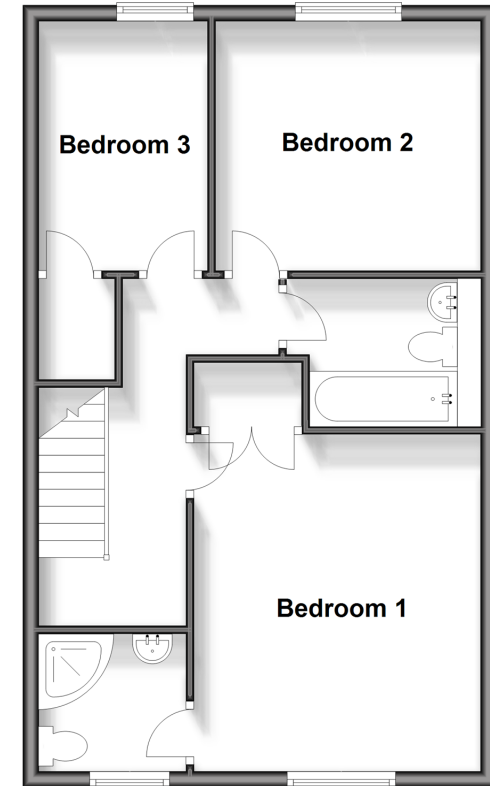
First Floor

Approx. 53.2 sq. metres (572.6 sq. feet)



Second Floor

Approx. 53.2 sq. metres (572.6 sq. feet)



Accommodation

GROUND FLOOR

Entrance Hallway
Cloakroom/Shower Room
Utility Room
Bedroom 4: 14'10 x 11'1 (4.52m x 3.38m)

FIRST FLOOR

Landing
Lounge : 15'6 x 11'7 (4.73m x 3.53m)
Kitchen/Diner: 19'0 x 15'1 (5.80m x 4.60m)

SECOND FLOOR

Bedroom 3: 11'2 x 6'11 (3.41m x 2.11m)
Bedroom 2: 11'7 x 11'3 (3.53m x 3.43m)
Bathroom
Bedroom 1: 13'10 x 11'6 (4.22m x 3.51m)
En-suite Shower Room

OUTSIDE

Integral Garage
Driveway
Front and Rear Gardens



Main features

- Prestigious development within the barracks
- Integrated garage and driveway
- Large windows and high ceilings throughout
- Large open plan living accommodation the 1st floor with ideal guest suite on the ground floor
- Minutes from the beach and shops on Walmer green



Nearest Schools

Primary Schools: Deal Parochial C of E Primary 0.2 miles, The Downs C of E Primary 0.5 miles, Warden House Primary 0.9 miles

Secondary Schools: Goodwin Academy 0.4 miles,



Transport Information

Train Stations: Deal 0.7 miles, Walmer 0.9 miles, Martin Mill 3.6 miles



Address

Cavalry Court, Walmer, Deal, Kent, CT14



Directions

For directions to this property please contact us.



Call Deal Branch 01304 361420 ■ wardsofkent.co.uk



- If buying to let, the energy rating will need to be improved to at least 'E' rating before you can let the property
- Appliances & services are untested, dimensions are approximate and floor plans are not to scale

- Legal advice should be taken to verify fixtures/fittings, planning, alterations and/or lease details
- Through a Homewise Home For Life Plan people aged 60+ can secure this property for up to 59% less, by purchasing a Lifetime Lease.

10635011/20240404/BG/LB1