



**Price**  
**£375,000**

**Freehold**

3x  2x  1x 

**Norman Place,  
Betteshanger, Deal,  
Kent, CT14**

**OVER 60?**

Secure this property  
for up to **59% less!**

*Wards*  
Helping you move forwards





## Main features

- Located in a peaceful cul-de-sac on Sholden fields
- Car barn parking for 2 cars
- High quality kitchen with breakfast bar
- Sunny aspect rear garden with sandstone paving and decked area
- Spacious main bedroom with en-suite shower room and fitted wardrobe

## Accommodation

### GROUND FLOOR

Entrance Hallway  
Cloakroom  
Kitchen : 12'2 x 7'5 (3.71m x 2.26m)  
Lounge : 15'11 x 14'4 (4.85m x 4.37m)

### FIRST FLOOR

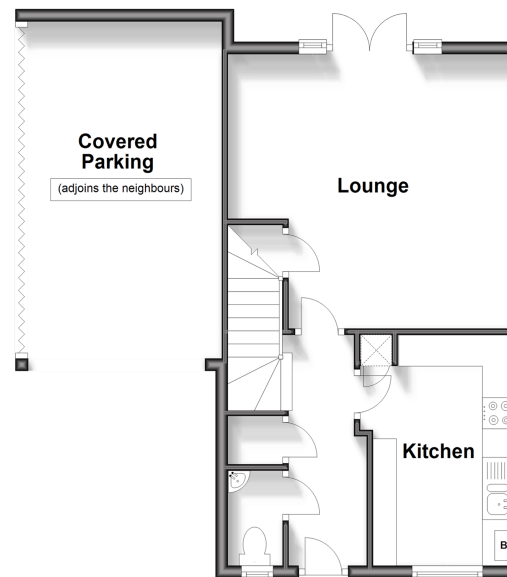
Landing  
Bedroom 3: 8'8 x 6'6 (2.64m x 1.98m)  
Bedroom 1: 11'7 x 8'4 (3.53m x 2.54m)  
En-suite Shower Room  
Bedroom 2: 10'5 x 8'5 (3.18m x 2.57m)  
Bathroom

### OUTSIDE

Covered Parking  
Off Road Parking  
Front and Rear Gardens

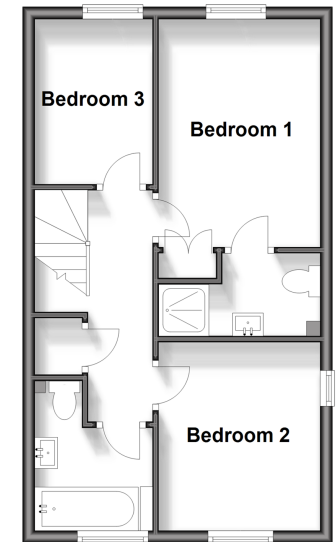
### Ground Floor

Approx. 38.0 sq. metres (409.3 sq. feet)



### First Floor

Approx. 38.0 sq. metres (409.3 sq. feet)



**Call Deal - 01304 361420 ■ wardsofkent.co.uk**

- Legal advice should be taken to verify fixtures/fittings, planning, alterations and/or lease details
- Through a Homewise Home For Life Plan people aged 60+ can secure this property for up to 59% less, by purchasing a Lifetime Lease.

- Appliances & services are untested, dimensions are approximate and floor plans are not to scale



10635020/20240328/LB1/LB1