



Price
£210,000

Freehold

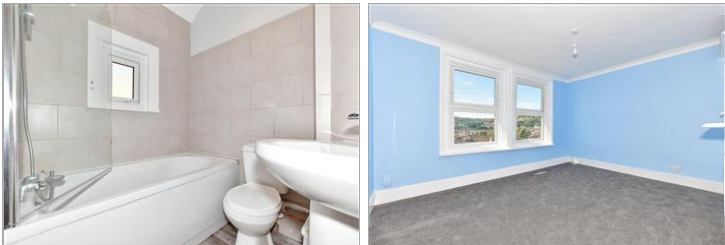
3x  1x  1x 

**Heathfield Avenue,
Dover, Kent, CT16**

OVER 60?

Secure this property
for up to **59% less!**

Wards
Helping you move forwards



Main features

- No onward chain complications
- Close to Dover town centre, schools and shops
- Ideal for first time buyers or investors
- Close to Dover Priory railway station
- Move in without having to lift a finger as the property has recently been refurbished to a high standard

Accommodation

SPLIT LEVEL GROUND FLOOR

Entrance Porch
 Entrance Hallway
 Lounge: 12'7 x 10'0 (3.84m x 3.05m)
 Dining Room: 13'2 x 10'4 (4.02m x 3.15m)
 Kitchen: 11'9 x 8'7 (3.58m x 2.62m)
 Downstairs Toilet
 Utility Area: 5'6 x 4'3 (1.68m x 1.30m)

SPLIT LEVEL FIRST FLOOR

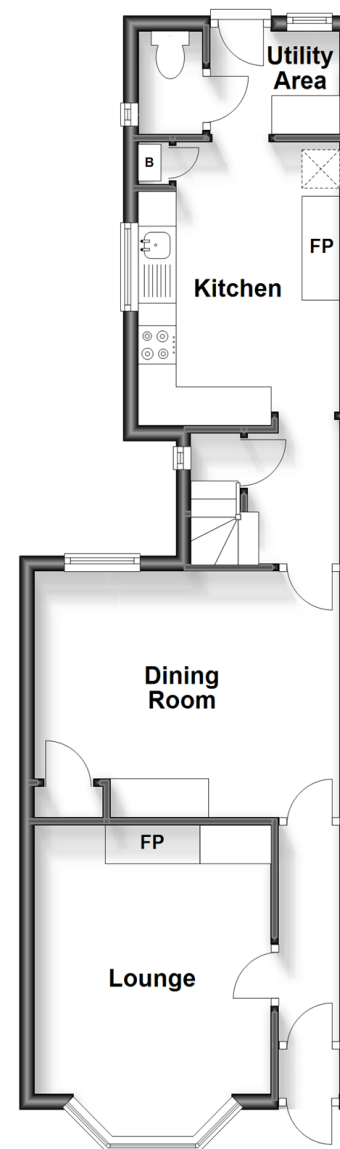
Landing
 Bedroom 3: 8'7 x 5'7 (2.62m x 1.70m)
 Bathroom
 Bedroom 2: 10'4 x 10'2 (3.15m x 3.10m)
 Bedroom 1: 13'0 x 11'5 (3.97m x 3.48m)

OUTSIDE

Rear Garden

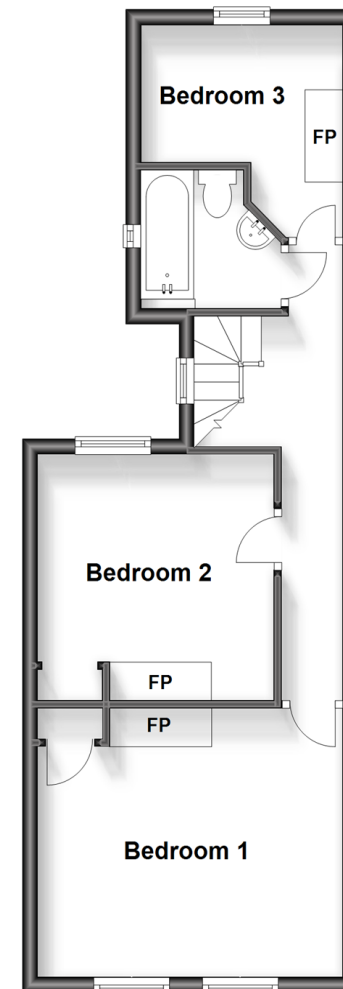
Split Level Ground Floor

Approx. 45.1 sq. metres (485.9 sq. feet)



Split Level First Floor

Approx. 41.0 sq. metres (441.7 sq. feet)



Call Dover - 01304 214876 ■ wardsofkent.co.uk

- Legal advice should be taken to verify fixtures/fittings, planning, alterations and/or lease details
- Appliances & services are untested, dimensions are approximate and floor plans are not to scale
- Through a Homewise Home For Life Plan people aged 60+ can secure this property for up to 59% less, by purchasing a Lifetime Lease.



10720233/20231122/GH/CB