



OVER 60?

Secure this property
for up to **59% less!**

Price
£240,000

Freehold

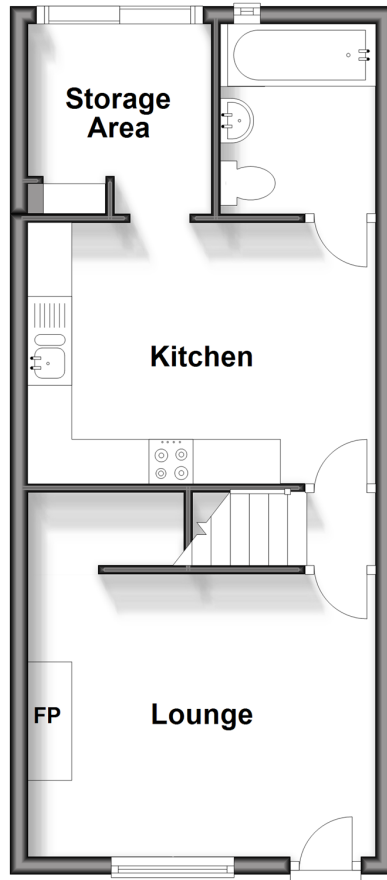
4x  1x  1x 

**Maison Dieu Place,
Dover, Kent, CT16**

Wards
Helping you move forwards

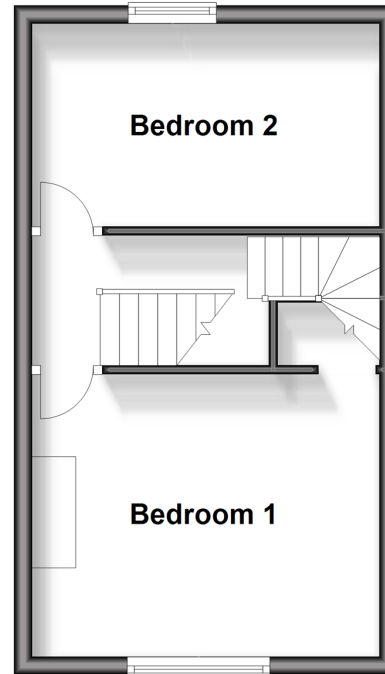
Ground Floor

Approx. 36.9 sq. metres (397.6 sq. feet)



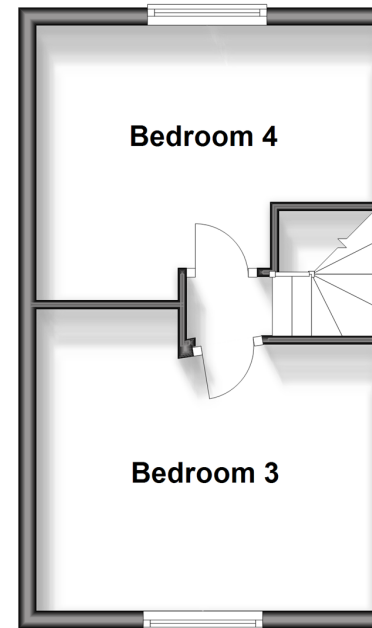
First Floor

Approx. 28.1 sq. metres (302.4 sq. feet)



Second Floor

Approx. 25.1 sq. metres (270.3 sq. feet)



Accommodation

GROUND FLOOR

Lounge : 12'8 x 10'5 (3.86m x 3.18m)

Kitchen: 12'8 x 9'6 (3.86m x 2.90m)

Storage Area: 6'4 x 5'8 (1.93m x 1.73m)

Bathroom : 6'9 x 5'8 (2.06m x 1.73m)

FIRST FLOOR

Landing

Bedroom 1: 12'8 x 10'5 (3.86m x 3.18m)

Bedroom 2: 12'4 x 7'9 (3.76m x 2.36m)

SECOND FLOOR

Landing

Bedroom 3: 12'3 x 10'9 (3.74m x 3.28m)

Bedroom 4: 12'5 x 6'4 (3.79m x 1.93m)

OUTSIDE

Rear Garden



Main features

- Beautiful period property in town
- Arranged over three floors, with plenty of space on offer
- Serene sound of River Dour outside
- Beautifully presented throughout, move in without lifting a finger
- In the heart of Dover town with easy access to shops and close to bus stop and Dover Prior railway station



Nearest Schools

Primary Schools: St Richard's Catholic Primary 0.2 miles, Charlton C of E Primary 0.3 miles, Dover, St Mary's C of E Primary 0.4 miles
Secondary Schools: Dover College 0.1 miles, Dover Grammar School for Girls 0.3 miles.



Transport Information

Train Stations: Dover Priory 0.2 miles, Kearsney 2.0 miles, Martin Mill 3.3 miles



Address

Maison Dieu Place, Dover, Kent, CT16



Directions

For directions to this property please contact us.



Call Dover Branch 01304 214876 ■ wardsofkent.co.uk



- If buying to let, the energy rating will need to be improved to at least 'E' rating before you can let the property
- Appliances & services are untested, dimensions are approximate and floor plans are not to scale

- Legal advice should be taken to verify fixtures/fittings, planning, alterations and/or lease details
- Through a Homewise Home For Life Plan people aged 60+ can secure this property for up to 59% less, by purchasing a Lifetime Lease.

10721408/20240427/TE/OV