



Guide Price
£350,000

Freehold

3x  1x  1x 

The Street, West
Houghan, Dover, Kent,
CT15

OVER 60?

Secure this property
for up to **59% less!**

Wards
Helping you move forwards



Main features

- **Idyllic rural village of West Hougham**
- **Off street parking and garage**
- **All bedrooms are very well proportioned, no box room**
- **Easy access to River, Folkestone, Deal and Dover towns**
- **Close to Dover mainline railway station with its high-speed links to London**

Accommodation

GROUND FLOOR

Entrance Hallway

Dining Room: 15'0 x 9'7 (4.58m x 2.92m)

Kitchen: 13'1 x 7'8 (3.99m x 2.34m)

Lounge : 13'8 x 6'7 (4.17m x 2.01m) plus
11'3 x 9'4 (3.43m x 2.85m)

FIRST FLOOR

Landing

Bedroom 1 : 18'0 x 9'5 (5.49m x 2.87m)

Bedroom 2 : 5'5 x 5'4 (1.65m x 1.63m) plus
7'8 x 8'9 (2.34m x 2.67m)

Bedroom 3 : 8'6 x 7'7 (2.59m x 2.31m)

Bathroom : 7'6 x 5'5 (2.29m x 1.65m)

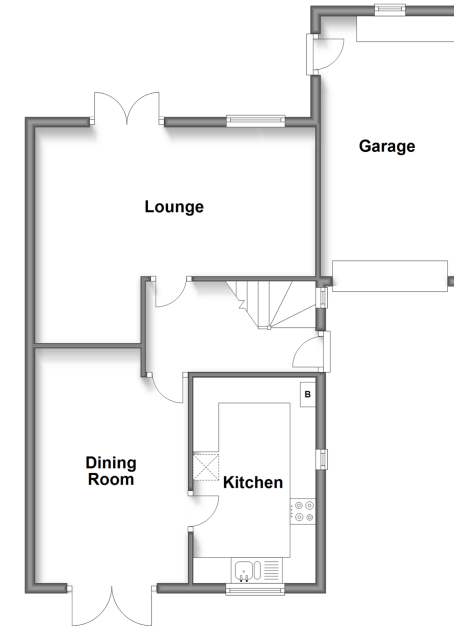
OUTSIDE

Front Garden

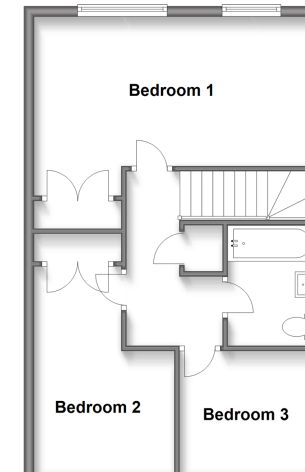
Rear Garden

Garage & Off Road Parking

Ground Floor
Approx. 62.5 sq. metres (673.1 sq. feet)



First Floor
Approx. 48.6 sq. metres (522.8 sq. feet)



Call Dover - 01304 214876 ■ wardsofkent.co.uk

- Legal advice should be taken to verify fixtures/fittings, planning, alterations and/or lease details
- Appliances & services are untested, dimensions are approximate and floor plans are not to scale
- Through a Homewise Home For Life Plan people aged 60+ can secure this property for up to 59% less, by purchasing a Lifetime Lease.



10722110/20240313/SB/OV