



Guide Price
£210,000

Freehold

3x  1x  2x 

Edgar Road, Dover,
Kent, CT17

OVER 60?

Secure this property
for up to **59% less!**

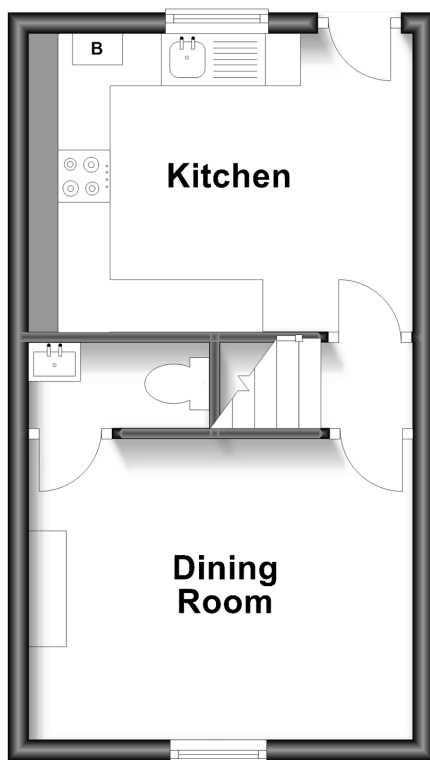


Video Tour available

Wards
Helping you move forwards

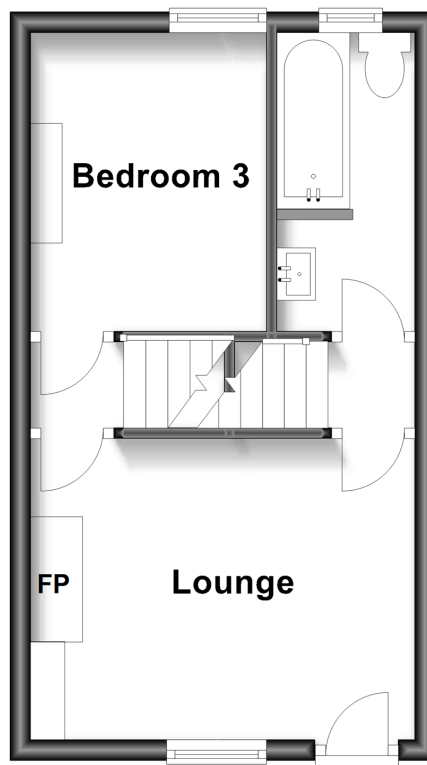
Lower Ground Floor

Approx. 24.9 sq. metres (268.0 sq. feet)



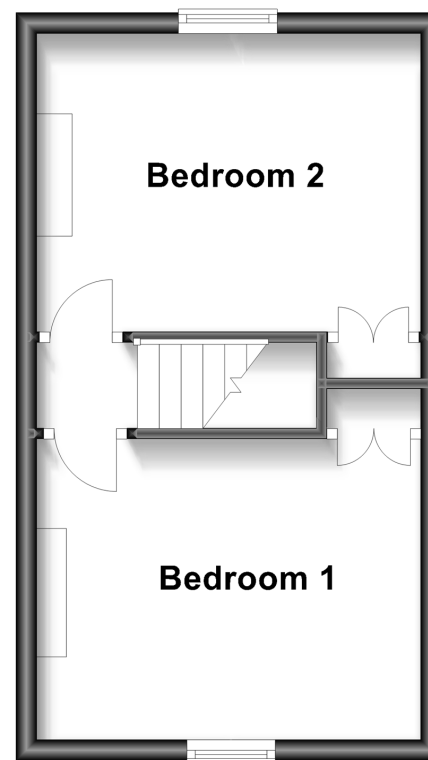
Ground Floor

Approx. 24.9 sq. metres (268.0 sq. feet)



First Floor

Approx. 24.9 sq. metres (268.0 sq. feet)



Accommodation

GROUND FLOOR

Lounge : 12'3 x 9'6 (3.74m x 2.90m)
Bedroom 3 : 9'3 x 7'6 (2.82m x 2.29m)
Bathroom : 9'2 x 4'2 (2.80m x 1.27m)

LOWER GROUND FLOOR

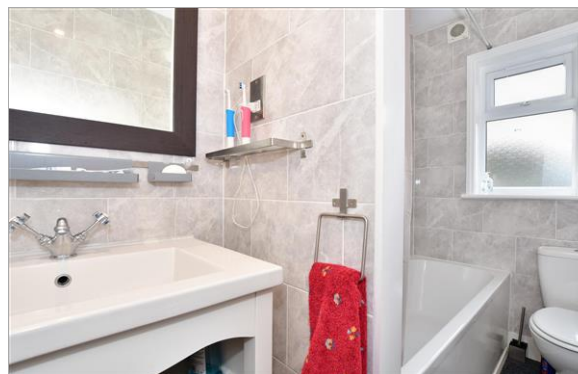
Kitchen : 10'8 x 8'8 (3.25m x 2.64m)
Dining Room: 11'0 x 8'7 (3.36m x 2.62m)
Cloakroom

FIRST FLOOR

Landing
Bedroom 2: 12'1 x 9'3 (3.69m x 2.82m)
Bedroom 1 : 11'1 x 9'2 (3.38m x 2.80m)

OUTSIDE

Rear Garden



Main features

- No onward chain complications
- Lovingly and fully refurbished throughout
- Generous & versatile accommodation arranged over 3 floors
- Rear garden perfect for entertaining & those summer evenings
- Fantastic location, close to schools & shops



Nearest Schools

Primary Schools: White Cliffs Primary College for the Arts 0.5 miles, Barton Junior School 0.9 miles, Dover, St Mary's C of E Primary 0.9 miles. Secondary: Dover Grammar School for Girls 1.1 miles, Dover Christchurch Academy 1.1 miles, St Edmund's Catholic School 1.2 miles.



Transport Information

Train Stations: Kearsney 1.8 miles, Dover Priory 2.1 miles, Martin Mill 5.0 miles



Address

Edgar Road, Dover, Kent, CT17



Directions

For directions to this property please contact us.



Call Dover Branch 01304 214876 ■ wardsofkent.co.uk



- Legal advice should be taken to verify fixtures/fittings, planning, alterations and/or lease details
- Appliances & services are untested, dimensions are approximate and floor plans are not to scale
- Through a Homewise Home For Life Plan people aged 60+ can secure this property for up to 59% less, by purchasing a Lifetime Lease.



10722796/20230331/OV/AF