



Guide Price
£100,000

Leasehold

1x  1x  1x 

De Burgh Hill, Dover,
Kent, CT17

OVER 60?

Secure this property
for up to **59% less!**



Video Tour available

Wards
Helping you move forwards



Main features

- **First Floor apartment - no onward chain**
- **Central town location close to shops**
- **Ideal first time buy or buy to let opportunity**
- **With an allocated parking space**
- **Close to a bus route**
- **Dover Priory railway station is not far away**

Accommodation

FIRST FLOOR

Entrance Hallway

Lounge/Kitchen : 14'8 x 10'6 (4.47m x 3.20m)

Bedroom : 12'7 x 12'6 (3.84m x 3.81m)

Separate Toilet

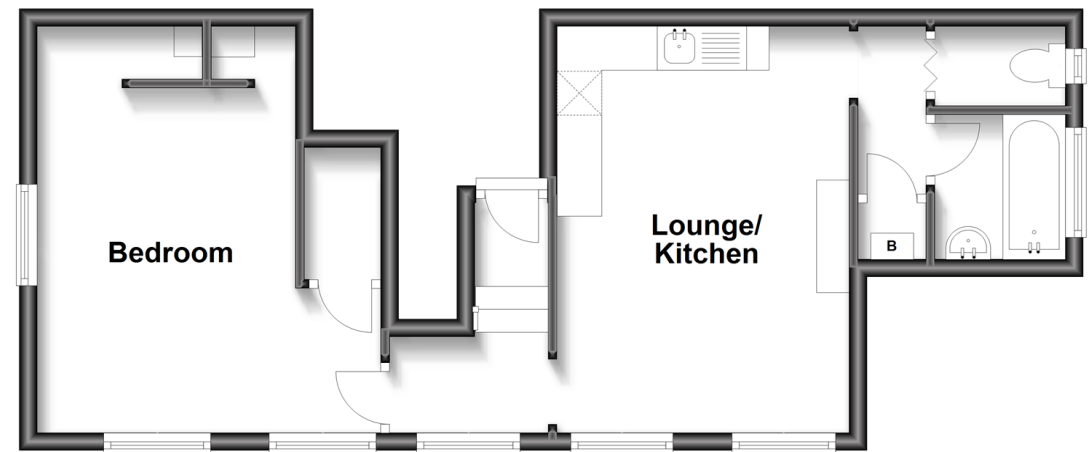
Bathroom : 5'3 x 4'7 (1.60m x 1.40m)

OUTSIDE

Allocated Parking Space

First Floor

Approx. 41.6 sq. metres (447.8 sq. feet)



Call Dover - 01304 214876 ■ wardsofkent.co.uk

- Legal advice should be taken to verify fixtures/fittings, planning, alterations and/or lease details
- Through a Homewise Home For Life Plan people aged 60+ can secure this property for up to 59% less, by purchasing a Lifetime Lease.

- Appliances & services are untested, dimensions are approximate and floor plans are not to scale



10723169/20230512/TE/OV