



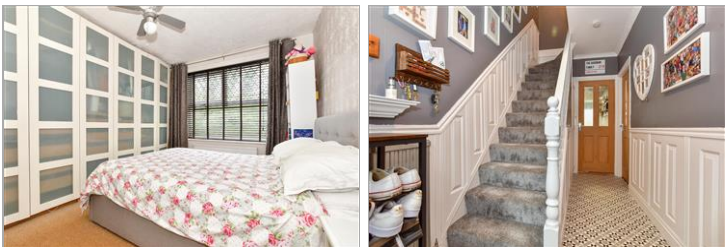
Price
£232,500

Freehold

3x  1x  2x 

**Brookfield Avenue,
Dover, Kent, CT16**

Wards
Helping you move forwards



Main features

- Beautifully presented period house
- Central heating and double glazing
- Close to schools and Dover town
- No onward chain complications, meaning you could be making this home your own sooner than you may think
- Dover has a main railway station with high speed links to London

Accommodation

GROUND FLOOR

Entrance Hallway

Lounge : 11'9 x 11'5 (3.58m x 3.48m)

Dining Area : 12'1 x 11'3 (3.69m x 3.43m)

Kitchen : 14'6 x 6'5 (4.42m x 1.96m) plus 9'0 x 5'6 (2.75m x 1.68m)

FIRST FLOOR

Landing

Bathroom : 6'9 x 5'7 (2.06m x 1.70m)

Bedroom 2 : 10'8 x 10'7 (3.25m x 3.23m)

Bedroom 1 : 12'9 x 12'7 (3.89m x 3.84m)

Bedroom 3 : 9'8 x 6'7 (2.95m x 2.01m)

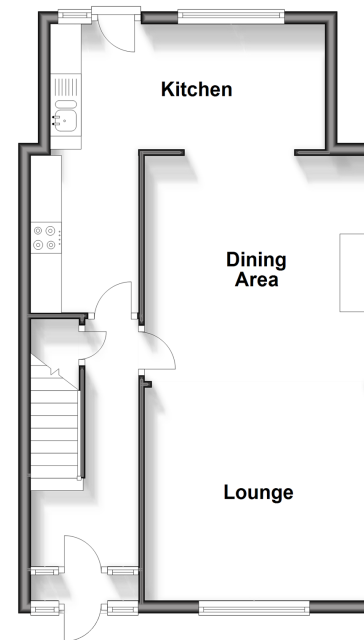
OUTSIDE

Front Garden

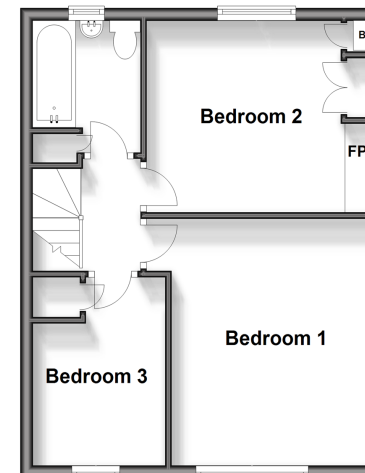
Rear Garden

Workshop/Outbuilding

Ground Floor
Approx. 48.9 sq. metres (526.6 sq. feet)

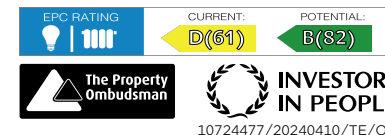


First Floor
Approx. 39.5 sq. metres (425.1 sq. feet)



Call Dover - 01304 214876 ■ wardsofkent.co.uk

- Legal advice should be taken to verify fixtures/fittings, planning, alterations and/or lease details
- Appliances & services are untested, dimensions are approximate and floor plans are not to scale



10724477/20240410/TE/OV