



**Price**

**£275,000**

**Freehold**

2x  1x  1x 

**Cranleigh Drive,  
Whitfield, Dover, Kent,  
CT16**

*Wards*  
Helping you move forwards





## Main features

- Beautiful home set in the sought-after village of Whitfield
- Ample off-road parking and garage
- Beautifully presented throughout, a real turn key home
- Great access to both A20 & M20, making it perfect for commuters
- Ideal home for taking your first steps on the housing ladder

## Accommodation

### GROUND FLOOR

Entrance Hallway

Lounge : 13'7 x 10'3 (4.14m x 3.13m)

Kitchen/Diner : 19'1 x 14'2 (5.82m x 4.32m)

### FIRST FLOOR

Landing

Family Bathroom

Bedroom 1 : 11'4 x 11'1 (3.46m x 3.38m)

Bedroom 2 : 10'8 x 7'4 (3.25m x 2.24m)

### OUTSIDE

Front Garden

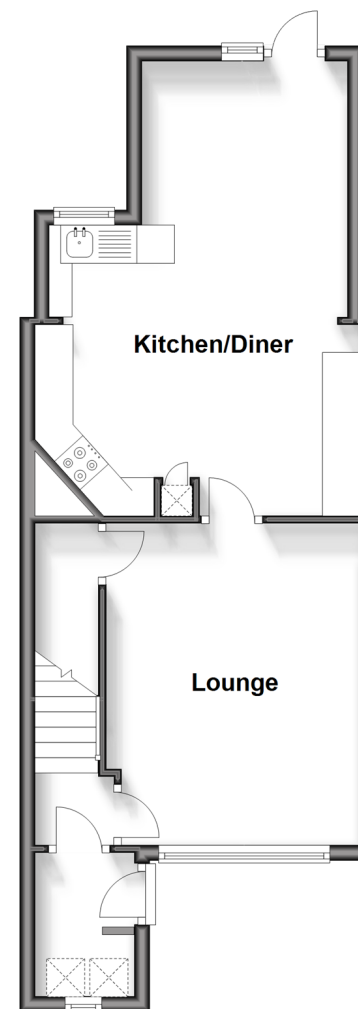
Rear Garden

Driveway

Garage En Bloc

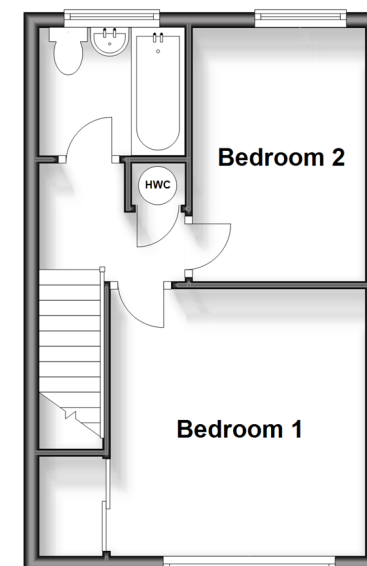
### Ground Floor

Approx. 42.5 sq. metres (457.4 sq. feet)



### First Floor

Approx. 29.5 sq. metres (317.5 sq. feet)



**Call Dover - 01304 214876 ■ [wardsofKent.co.uk](http://wardsofKent.co.uk)**

- Legal advice should be taken to verify fixtures/fittings, planning, alterations and/or lease details
- Appliances & services are untested, dimensions are approximate and floor plans are not to scale



10724861/20231201/TE/OV